

L.J. BARON EST. 1953 *The Claudette GRIFFIN Group*
~ Realty ~
Matt McSherry, REALTOR®
204-886-7585 (cell)
888-629-6700 (office)
Matt.ljbaron@gmail.com
www.ljbaron.com (web)

Multi-Award Winning Realtor®

SOLD **Mulvihill \$179,900** 1178 sf 3 BR + HUGE Insl Shop - Ideal Winter/Summer retreat.

SOLD **The Narrows - \$269,900** 1900 SF Beautiful 2 BR LAKEFRONT

SOLD **Ashern - \$119,900** Starter/Investment property. 1127 sf, 3 BR w/oversized Garage.

SOLD **Oak Point - \$89,900** Close to the LAKE! 2 BR 4 Season Home on beautifully treed lot.

THE EXPRESS

VOLUME 8 EDITION 44 THURSDAY, NOVEMBER 11, 2021

www.expressweeklynews.ca

WEEKLY NEWS

SERVING LUNDAR, ASHERN, ERIKSDALE, MOOSEHORN, FISHER BRANCH, RIVERTON, ARBORC, CIMLI, WINNIPEG BEACH, ARNES, MELEB, FRASERWOOD



2X24" Snow Blower
2X™ TWO-STAGE POWER

243cc OHV engine w/ push-button electric start
24 inch clearing width
15" X-Trac™ tires strong traction

\$1,299
Cub Cadet

2X28" Snow Blower
2X TWO STAGE SERIES

272cc OHV engine w/push-button electric start
28 inch clearing width
16" X-Trac™ tires strong traction
Dual LED headlights

\$1,699
Cub Cadet

Yard Machine Snow Blower
2-Stage

30" Gas
357cc PowerMore OHV Electric/Recoil start

\$1,099
Cub Cadet

Yard Machine
2-Stage
24" Gas
Snow Blower

179cc PowerMore OHV Electric/Recoil Start

\$799

SHACHTAY SALES & SERVICE
Arborg, MB
204-376-5233



Giving back

EXPRESS PHOTO BY JO-ANNE PROCTER
 The Interlake Lightning Female U18 AAA team takes pride in giving back to their communities. On Nov. 8 the team gathered before practice at the VMSC in Stonewall to pack up their fundraiser perogies. Each player purchased an extra box of six dozen perogies to donate to a charity in need in their home community. Pictured left to right, back row, Brooke Baryliski, Rachel Halldorson, Kenady Christensen, Kylee Emms-Finnsson, Mikki Thorkelson and Shyanne Chartrand; front row, Jayden Favel, Veronica Smart and Kiorra Johannesson.

> everything you need to know in your locally owned and operated community newspaper

GET A GRIP ON WINTER

Enter to win **\$1,000** with the purchase of any 4 tires.

WINTER TIRE SALE

Receive up to **\$100 off** eligible set of GoodYear tires

POWERBEND 441 River Rd., Arborg (204) 376-2247

COME IN AND SEE US FOR OTHER GREAT DEALS. REBATES AND DISCOUNTS ON MOST BRANDS.

FULL LINE OF **GOOD YEAR** TIRES IN STOCK

WE DO MPI WINTER TIRE FINANCING

WE CARRY MOST BRANDS

SAILUN TOYO TIRES KUMHO TIRE and many more.

Arborg students put social justice into action by collecting food for Bridge Pantry

By Patricia Barrett

Students at Arborg Collegiate put their social-justice principles into action on Halloween night by collecting non-perishable food for local families in need.

Teacher and guidance counsellor Rachel Orbanski said students involved in the school's ACTION (A Change Towards Improving Our Nation) group — which fosters social justice, well-being and school spirit — organized the food drive and participated in collecting it on Halloween.

"There were so many generous donations from the town," said Orbanski last week.

Eighteen students in grades 9 through 12 helped collect non-perishables for Arborg's local food bank, the Bridge Pantry, which distributes food hampers to the community, she said.

"We are very proud of our students and greatly appreciate the community support," said Orbanski.

The Bridge Pantry is run by Youth for Christ Arborg, a satellite location of the charitable organization Youth for Christ Winnipeg. The Arborg group runs various drop-in



Eighteen Arborg Collegiate students in grades 9-12 collected food for families in need on Halloween.


EXPRESS PHOTO COURTESY OF RACHEL ORBANSKI

programs, field trips, cooking classes and other activities for youth. The Bridge Pantry offers food hampers to everyone in the Arborg area, not just the youth who attend programs there, according to its website.

The Bridge Pantry is most in need of dairy products, bread, vegetables (fresh, frozen, canned), pas-

ta, meats, frozen foods and other "healthy" food items. People are also welcome to donate items such as folding tables, stacking or folding chairs, board games, video games, sports equipment and specific electronic items (see website for details).

For more information about the pantry or Bridge programs, call 204-376-5786.



The Northern Lights Festival of the Arts held a meeting on Oct. 25th and after a lengthy discussion, it was decided that this year's festival will be cancelled.

With on-going restrictions and requirements for checking vaccine status and a large decline in the number of children participating in music lessons, it seemed the most prudent decision at this time.

There is every intent to continue with the festival at a future date.

Any questions or concerns, please feel free to contact a committee member.

**Annette Holowka, Chair
1 204 641 1760**



Each \$5 gift is worth \$7 during the Endow Manitoba Giving Challenge, November 15 – 21

There's never been a better time to help our community flourish forever! Westshore Community Foundation encourages residents along the west side of Lake Winnipeg from Dunnottar to Riverton to make a gift between November 15 – 21 as part of the Endow Manitoba Giving Challenge. For this week only, each \$5 gift you make becomes \$7!

The Winnipeg Foundation will stretch each \$5 gift made to Westshore Community Foundation with \$1. The Manitoba government continues their commitment to Manitoba community foundations with their support of the Endow Manitoba Giving Challenge 2021. The province will also contribute \$1 for every \$5 gift.

Online gifts can be made securely through www.endowMB.org, or by phoning The Winnipeg Foundation office, toll-free at 1-877-974-3631, between Nov. 15-21, 9 a.m. to 3 p.m. Gifts can also be made by cheque payable to Westshore Community Foundation and mailed to Westshore Community Foundation, Box 395, Gimli, Manitoba ROC 1B0.

"This is a great opportunity to support Westshore Community Foundation," says Tim Arnason, President of Westshore Community Foundation. "Of course, we welcome gifts at any time, but between November 15 – 21 your donation will be stretched by the Winnipeg Foundation and the Manitoba government. We're so excited to see what our community can accomplish!"

Your gift during the Endow Manitoba Giving Challenge will help grow Westshore Community Foundation's capacity to support a wide range of charitable projects in our catchment area for years to come.

Manitoba is home to 56 community foundations – more than any other area of the country. Donations to a community foundation are pooled and permanently invested. Gifts are never spent and the money will always stay in the community. Every year, these investments generate money that is distributed to support local charitable needs and allows our Foundation to continue "Building a Lasting Legacy" within our communities of interest.



Baker Law CORPORATION

Providing full time legal service to families and small businesses in Gimli and the Interlake.

If you are buying or selling real estate now or in the near future, call us to discuss the important legal issues that you will need to know about. Call us for more information and to find out how we can help you. ***We are here when you need us.***

Grant D. Baker
Barrister, Solicitor and Notary

Our office is open 9-5 Mon to Fri
72 Centre Street, Gimli, MB
**204-642-8681 or
1-866-487-5688**

Fisher Branch's Northern Lights Festival postponed for second year

By Patricia Barrett

Although Fisher Branch's Northern Lights Festival of the Arts was postponed for the second year running, organizers are planning to offer new artistic performances in future and are looking for festival volunteers.

Festival organizers decided to postpone the popular performing arts festival, which is held every spring and showcases talented singers, dancers and musicians from the northern Interlake region.

Festival chair Annette Holowka a number of factors led to their decision to wait another year, including the ongoing high number of COVID-19 infections and the possibility of not having enough student entries to hold the festival.

"To make our festival viable and to make good use of our donated money, we need about 100 participants," said Holowka last week. "And I just didn't see that we'd get that number this year."

She said she did a survey of the three piano teachers in the region and was told their student enrollment was down. Practices used to be held in school classrooms, but because of COVID, music teachers can no longer use those spaces.

"The children who were doing well at guitar, ukulele, piano and banjo pretty much had two years of little or no lessons is my understanding because of the pandemic," said Holowka. "Two piano teachers started offering lessons in their homes but their numbers are definitely down so we wouldn't have a lot of children participating in the festival."

The week-long festival has professional adjudicators assess student performers of all ages from communities such as Fisher Branch, Poplarfield, Hodgson, Ashern, Peguis First Nation and Fisher River Cree Nation. Many would go on to perform in the pro-



Guitarist Horatio Chudy performed Amazing Grace during the 2017 festival.

vincial music festival or attend music camp at the International Peace Garden. The festival's highlights show at the end of the week always drew a 300-plus crowd to the Fisher Branch Community Hall.

Manitoba's severe drought could have played a role in declining student numbers, said Holowka. Farmers are the predominant industry in the region, and the financial hardships they may have suffered through crop losses could have forced them to scale back on programs for their children.

Indigenous dance groups from Peguis and Fisher River and Ukrainian dance groups from Fisher Branch and Ashern had earlier indicated they wouldn't be participating in the festival because of COVID or they decided to not hold registration, she said.

Holowka said future festivals might include gymnastic performances because there is a club being organized in the Ashern-Moosehorn region. The festival also showcased multicultural dances from the East Indian and Philippine communities in the area.

Because the festival receives a lot of support from its communities, said



EXPRESS FILE PHOTOS BY PATRICIA BARRETT

The Chaika Ukrainian Dance Club from Fisher Branch performing at Northern Lights.

Holowka, it was able to provide monetary awards to students and send them to the peace garden music camp.

Even though the festival has been postponed, Holowka said they're in need of volunteers, especially younger people or parents with children. They don't hold a lot of in-person

Continued on page 5

Carbon Monoxide
is the
SILENT KILLER!



Install a CO alarm.

Safety.
It's in **your** hands.





ALL COVID RULES APPLY
Lic #318

Fraserwood Hall

Friday Nights 7:15 PM
November 12, 2021

Breakopens 50/50

5 Share The Wealth Games
15 Regular Games @ \$60.00
(reduced games with low attendance)

JACKPOT	\$2,275.00
FIRST SPECIAL	\$770.00 +
BONANZA	\$10,117.00 +
LUCKY 7	\$748.00 +
STAR	\$650.00 +
WEEHOUSE	\$1,198.00 +
HOUDINI	\$12,829.00 +
LOONIE POT	\$488.00 +

(Estimated amounts at time of publication)

"CHASE THE ACE"
Lic # LGA 318-RF

Tickets sold 5:00 - 7:00 PM
with draw to follow

**\$2.00/ticket Current Accumulator - \$1,123.00+
CANTEEN - OPENS @ 5PM**

Perogies, hamburgers, hotdogs, desserts, etc
INFORMATION - 204-642-9392 or
204-643-5541 or www.fraserwoodhall.com

50th Annual Fall Supper & Dance
Sat. Nov. 13, 2021

Cocktails 5:30pm, Supper 6:30pm,
music by Country Pride. Tickets \$25,
7yrs to 12yrs \$12.50, 6 & under free
Proof of vaccination required at the door,
Covid Guidelines will apply.

For tickets contact Brandy 204-643-5230,
Nancy 204-643-5133 or J & J Store 204-643-5556

Craft Sale Sat. Nov. 27, 2021,
10am - 3pm, hot canteen, for info: Yvonne
204-642-5352 Covid Guidelines will apply
Proof of Vaccination required at the door.

Old Time Dance, Sunday Dec. 5, 2021
1pm to 4pm, music by Country Pride. \$15
admission at the door, Call to reserve
tickets - Brandy 204-643-5230 or Nancy
204-643-5133
Proof of vaccination required at the door,
Covid Guidelines will apply.

TAYLOR McCAFFREY
LAWYERS

Serving Gimli and the Interlake for over 35 years.

With offices in Gimli and Riverton, we provide advice to clients on a wide variety of legal matters.



VIKING PARK

To make an appointment please contact:
David C. King 204-988-0420 | 1-800-235-9009
dcking@tmlawyers.com | tmlawyers.com

Stefanson sworn in as Manitoba's first female premier

By Ashleigh Viveiros

Heather Stefanson was sworn in as Manitoba's first female premier last week.

Stefanson, who won the Progressive Conservative Party of Manitoba's leadership race against Shelly Glover by 363 votes (Glover is currently appealing to the courts to declare the results invalid), took over the role of premier Nov. 2 from Kelvin Goertzen, who filled it in an interim capacity after Brian Pallister stepped down.

A woman becoming Manitoba's 24th premier is something that was once "unthinkable," Stefanson reflected after being sworn in, going on to honour the legacy of the women who came before her in various roles in government, steadily paving the way for this day.

"While I may be the first woman to hold this office, I take this oath confident in the knowledge that I will not be the last," she said.

Stefanson pledged that her government is committed to acknowledging and reconciling for the sins of the past when it comes to the province's treatment of Indigenous peoples.

"Our government is committed to listening and learning from First Nations leaders, Elders, and Indigenous families as we advance reconciliation together," she said. "I look forward to learning from Indigenous Manitobans and working together to heal the wounds of the past and forge a new path forward."

The pandemic is also top of mind for the new

premier, who acknowledged it has "affected the lives and livelihoods of every Manitoban."

The crisis has created and exposed challenges in the province's health care system, Stefanson said, announcing the creation of a task force to "clear the surgical and diagnostic backlogs and enhance our ICU capacity."

She also pledged to "do right by our seniors" by implementing every recommendation made in the review of Manitoba's long-term care system.

And when it comes to the economy and the struggles the pandemic has caused, she promised the government is committed to helping entrepreneurs get back on their feet.

"To the extent that government is impeding their productivity and growth, we need to get out of their way and let them run their businesses," she said. "Over the coming months and years, that is exactly what our government will do. We will listen to our business community and create the conditions for economic growth."

Above all, Stefanson stressed she believes wholeheartedly in the values of peace, prosperity, and human rights for all.

"I promise that I will always be humble in the pursuit of that cause," she said. "I promise that I will always listen to you, the people of Manitoba. And I promise that in two years, when this government seeks a renewed mandate, you will see yourself in our priorities and our vision."

"I will work every day to gain and maintain your



SCREENSHOT

Premier Heather Stefanson reflected on the women who came before her in government and is confident that while she may be the first female premier, she certainly won't be the last.

trust."

Stefanson will deliver her first throne speech as premier on Nov. 23.






307A MANITOBA AVE
SELKIRK MB - R1A 0Y6
Phone: 204-482-8332
www.addiesworldofcolor.com

Please contact us for further information on qualifying products.



PIROUETTE® WINDOW SHADINGS

Invest in the beauty and comfort of home this holiday season with Hunter Douglas shades.

REBATES STARTING AT
\$125*
ON QUALIFYING PURCHASES
SEPT. 11 - DEC. 6, 2021

BONUS! Receive a one-time, \$125 bonus rebate when you include 2 or more pairs of Design Studio™ Side Panels with a qualifying purchase.

*Manufacturer's rebate offer valid for qualifying purchases made 09/11/21-12/06/21 from participating dealers in Canada only. Rebate will be issued in the form of a prepaid reward card mailed within 6 weeks of meeting all promotional eligibility. Funds expire 18 months after activation. Funds are not insured by the Canada Deposit Insurance Company (CDIC). See complete terms distributed with reward card. Additional limitations may apply. Ask dealer for details or visit hunterdouglas.com for rebate form. ©2021 Hunter Douglas. All rights reserved. All trademarks used herein are the property of Hunter Douglas or their respective owners.



PERSONALIZED
Christmas
CARDS

Tis the season to share your favourite photo and wish family & friends a joyful holiday

With our custom order Christmas Cards, you can upload your favorite family photo. Spread Peace! Love! Joy! with a one-of-a-kind photo cards that will leave an indelible impression!

- 8.75" wide x 3.825" high
- includes one photo
- colour on front with blank back
- printed on coated card stock
- blank white envelopes included
- Have more than one photo? Add \$5.00/additional photo

24 cards \$48.00

48 cards \$61.50

72 cards \$72.75

96 cards \$83.00

PLUS TAXES

Phone: 204-467-5836

Graphics Email photos to: igraphic@mymts.net **Stonewall Teulon Tribune**

Central Interlake and Gimli chambers want businesses to light up

Cash and promotional prizes

By Patricia Barrett

Businesses within the catchment areas of the Central Interlake Chamber of Commerce and the Gimli Chamber of Commerce are encouraged to go for glory with dazzling holiday window displays, add some extra sparkle to their local communities and turn the spotlight on themselves.

The two chambers are teaming up to host a "Holiday Lights" decorating contest for the businesses in their areas, and will be offering them a chance to win prize packages that are guaranteed to brighten up their season.

Businesses located in communities such as Arborg, Virdir, Hecla, Riverton, Hnausa, Arnes, Gimli, Fraserwood and Winnipeg Beach are eligible to enter the friendly competition.

The contest is being spearheaded by Kristi Popowich Meek, who grew up in the Arborg-Riverton area and is now president of the Assiniboia Chamber of Commerce, with assistance from her daughter, Delaney. Popowich Meek received input from the central chamber's president Richard Chomokovski and past president Owen Eyolfson, as well as from the Gimli chamber's co-chairs, Cheryl Buhler and Melanie Specula.

Popowich Meek said organizations are struggling to attract volunteers. It's a North America-wide phenomenon that has been made worse by the COVID-19 pandemic and periodic lockdowns. That's why she offered to pitch in at the central chamber.

"I want to help out my hometown chamber because I see the struggle with volunteers or with not necessarily having administrative staff," said Popowich Meek, who is also a board

member of the Chamber Executives of Manitoba and the Chamber of Commerce Executives of Canada. "That's why I reached out to the central chamber this summer and said, 'How can I help? What do you need?' They can use me as a resource."

She had already applied for some grants through the provincial and federal chambers for the Assiniboia chamber, she said, then applied for some funding for her hometown chamber to enable it to support its local business community. The Gimli chamber, meanwhile, had applied for its own grant before reaching out to the central chamber to see if they could work together on a project. The central chamber suggested an eye-catching lighting display.

The lighting contest is, arguably, better than one of Canada's national lotteries because you don't have to shell out for a ticket, you get several chances to win and there's a much smaller pool of entrants compared to a lottery.

Businesses in the chambers' catchment areas — whether or not they're chamber members — can enter the Best Window Display and Most Creative Use of Lights.

Once business owners have submitted their entry form, they'll be automatically enrolled in two other categories: Best Overall, which will be selected by the chamber's official selection committee, and Fan Favourite, which will be chosen by the public (there will be three Fan Favourite prizes for the major centres of Arborg, Gimli and Riverton).

The winners will receive bragging rights, promotion of their businesses on the chambers' respective Facebook



EXPRESS PHOTO BY KRISTI POPOWICH MEEK

Kristi Popowich Meek (right) and her daughter Delaney Meek were getting into the holiday lighting spirit last Saturday in Arnes.

pages, \$200 cash, a \$200 donation to a local charity of the winning business's choice and an article about their business in the *Express*.

"We want to bring awareness to our area businesses," said Popowich Meek. "We will be promoting them on our Facebook pages after they register in the contest. And if they're a member of one of our chambers and they're having a sale, we can tag it and get them some extra attention."

Businesses can enter the contest before or on Wednesday, Dec. 1. An electronic entry form will be available on each chamber's Facebook page.

Businesses must display their lights from 6 to 10 p.m. on Friday, Dec. 17 and from 6 to 10 p.m. on Saturday, Dec. 18

for viewing by the selection committee. Winners will be announced on Sunday, Dec. 19.

The public are encouraged to take photos of the displays that catch their eye and post them on social media with specific hashtags (see advertisements for more information), as well as to shop locally to support their communities. There will be upcoming Moonlight Madness sales (in Arborg, Gimli, Riverton and possibly other communities) and various Christmas markets in the region.

For more information, visit the two chambers on Facebook: @centralinterlakechamber and @gimli-chamber.

> POSTPONED, FROM PG. 3

meetings because of COVID; it will be primarily email corresponding.

"We have every intention of moving forward with the festival when we can. There's no doubt it's a valued festival and it's important for our children. That's why we started it in the first place," said Holowka.

Anyone interested in volunteering for Northern Lights

can call or text Annette Holowka at 204-641-1760 or email her at bholowka@mymts.net.

What's *Your* story?

We want to hear from you.

The Express Weekly News connects people through stories to build stronger communities.

Do you know someone who has a unique hobby? Will be recognized by a local organization for volunteer service? A teacher that goes above and beyond? A hometown hero? A sports star? A business celebrating a milestone or expansion? A senior celebrating their 100th birthday? A young entrepreneur starting out?

Please share your story ideas at news@expressweeklynews.ca or Phone 204-467-5836

THE EXPRESS WEEKLY NEWS

Take care of details so they don't have to. **Just ask Ken.**

kl
KEN LOEHMER
FUNERAL SERVICES

55 Main St, Teulon Call 204-886-0404 or visit www.klfuneralservices.ca

THE **Flicks** CINEMA
319 First Street E., Stonewall, MB
SHOWTIMES:
Please check individual listings
Due to various picture lengths showtimes vary
204-467-8401
PROGRAM SUBJECT TO CHANGE WITHOUT NOTICE
Cash only

REOPENING POSTPONED BECAUSE OF EQUIPMENT PROBLEMS

- Must wear masks in ALL parts of the theatre except when seated and eating.
 - Please follow 2 metre distancing
 - Proof of double vaccination required for entry (government card or government issued print out or QR code.) Under 12 unvaccinated children may enter accompanied by a fully vaccinated member of their household. PICTURE ID MUST BE SHOWN
- These are government rules - do not blame the theatre staff.*

THE EXPRESS WEEKLY NEWS



PUBLISHER
Lana Meier



SALES
Brett Mitchell



SALES AND MARKETING
Jasmin Wolf



REPORTER/PHOTOGRAPHER
Jennifer McFee



SPORTS EDITOR
Brian Bowman



REPORTER/PHOTOGRAPHER
Patricia Barrett



ADMINISTRATION
Carrie Sargent



REPORTER/PHOTOGRAPHER
Sydney Lockhart



REPORTER/PHOTOGRAPHER
Becca Myskiw



REPORTER/PHOTOGRAPHER
Nicole Brownlee



PRODUCTION
Debbie Strauss



DISTRIBUTION
Christy Brown



PRODUCTION
Nicole Kapusta



ADMINISTRATION
Allana Sawatzky



ADMINISTRATION
Jo-Anne Procter



OUR SISTER PUBLICATIONS
Tribune
The Voice
The Carman-Dufferin
STANDARD
Selkirk Record

getheard > Got news?

NEWS > VIEWS > GIMLI > ARBORG > HIGHWAY 6 > SURROUNDING AREAS



Call Patricia Barrett
1-204-407-6099
patricia@expressweeklynews.ca



Call Nicole Brownlee
1-204-467-5836
nicole@expressweeklynews.ca

Low vaccination, high test positivity rates in Southern Health

By Ashleigh Viveiros

The Southern Health region's low vaccination uptake is leading to some sobering numbers.

Last Friday, public health officials for the first time released the COVID-19 test positivity rates for all five Manitoba health regions.

Southern Health-Santé Sud was seeing a five-day test positivity rate of 14.5 per cent that week, well above the 9.5 per cent being seen in the Northern health region, 5.3 in Interlake/Eastern, 4.8 in Prairie Mountain, and two per cent in Winnipeg.

At 68.4 per cent, Southern Health's vaccination rate is the lowest in the province by a wide margin; the next lowest is Prairie Mountain at 81.7 per cent.

As of Monday, Southern Health accounted for 439 of Manitoba's 1,377 active COVID-19 cases—over 30 per cent—and nearly half of all the new cases reported over the past week, despite only having about 15 per cent of the province's population.

Of the 141 Manitobans hospitalized due to COVID-19 on Monday, 62 are from Southern Health. The region also accounts for 15 out of the 26 people currently in ICU due to the virus.

"We are monitoring the situation in Southern Health, as we are monitor-

ing the situation throughout the province," deputy chief provincial public health officer Dr. Jazz Atwal said at a press conference last Wednesday. "We're looking to see if there's anything else we can do from a measures perspective and recommendations to government related to Southern Health as well."

Currently, the bulk of the Southern Health region has more restrictive capacity limits in retail stores (50 per cent) compared to the rest of the province, but no other extra restrictions.

Atwal said they're looking closely at what the picture might look like across the province in the weeks ahead but could give no firm details on what, if any, further restrictions might be on the horizon.

"We're looking at where we anticipate cases to be over the next one to six weeks' time and also where hospitalizations and acute care capacity requirements will be over that time," he said. "So we're taking in a lot of information right now, we're synthesizing it, and we're going to look at seeing what else we can do from a public health perspective in those locations."

When it comes to reaching out to communities in Southern Health, Atwal said they plan to continue working with local leaders to help educate

people about the vaccine's efficacy and alleviate concerns they may have about its safety.

"The vaccine has proven quite powerful in preventing cases and also in preventing those severe outcomes," he stressed.

Manitoba on Monday reported 156 new cases, its largest daily increase in infections since June. Fifty-six of those were in Southern Health.

Across Manitoba, unvaccinated or partially vaccinated people make up about 60 per cent of active COVID-19 patients in hospital and 89 per cent of those in ICU.

Interlake-Eastern reported nine new cases on Monday bringing the total of active cases to 129. Nine active hospitalization cases with three in ICU. To date we have had 55 deaths from our region.

Active cases by district: Arborg/Riverton, two; Beausejour, six; Eriskdale/Ashern, seven; Fisher/Peguis, six; Gimli, one; Northern Remote, 25; Pinawa/Lac du Bonnet, three; Selkirk, six; Springfield, 27; St. Clements, four; St. Laurent, seven; Stonewall/Teulon, 29; Unknown, four; and St. Andrews, two. Powerview/Pine Falls and Whiteshell had zero.

West Interlake RCMP investigate fatal collision

Staff

West Interlake RCMP received a report of a fatal motor vehicle collision on Provincial Road 325 West, approximately 16 kilometres west of Ashern, in the RM of West Interlake on Nov. 6, at about 7 a.m.

Initial investigation has determined that the vehicle went onto the shoulder

of the road, struck an entrance driveway to a field, causing the vehicle to flip several times. All four occupants of the vehicle were ejected. None of the occupants were wearing seatbelts.

The 31-year-old female driver of the vehicle from Ebb and Flow First Nation was pronounced deceased on

the scene. The 33-year-old male front seat passenger, from Pinaymootang First Nation, and two male children in the rear seat, aged six and two, were all transported to Winnipeg hospital. They remain in hospital in stable condition. The investigation continues with the assistance of a RCMP forensic collision reconstructionist.

ADVERTISING OR PRINT CONTACT INFORMATION

Lana Meier 204-292-2128
ads@expressweeklynews.ca

Jasmin Wolf 204-771-8707
ads@stonewallteulontribune.ca
PHONE 204-467-5836
FAX 204-467-2679

> EMAIL US

Letters to the Editor: letters@expressweeklynews.ca
Classifieds: classifieds@expressweeklynews.ca
News: news@expressweeklynews.ca
Print: igraphic@mymts.net

OUR EDITORIAL STAFF

Brian Bowman Sports Reporter
sports@expressweeklynews.ca

Nicole Brownlee Reporter/Photographer
nicole@expressweeklynews.ca | 204-232-5191

Patricia Barrett - Reporter/Photographer
Cell 204-407-6099 patricia@expressweeklynews.ca

ADDRESS

74 Patterson Drive, Stonewall Industrial Park
Box 39, Stonewall, MB R0C 2Z0

PAPER DELIVERY OR FLYER CONCERNS

Christy Brown, Distribution Mgr.: 204-467-5836

The Express Weekly News is published Thursdays and distributed through Canada Post to 11,396 homes. Republishing in whole or in part without permission is strictly prohibited. Printed in Canada by Prolific Printing.

This newspaper is supported 100% by advertising dollars. If you enjoy the paper and would like to see the newspaper grow and prosper visit any of the advertisers and businesses in our rural communities. - Keep your dollars working at home and shop local. Our commitment to you, the reader - we connect people through stories to build stronger communities.

Advertising Deadline: Monday 4:00 pm
prior to Thursday Publication
View the Express Weekly News online at
www.expressweeklynews.ca



get informed

NEWS > VIEWS > GIMLI > ARBORG > HIGHWAY 6 > SURROUNDING AREAS

Honouring our ancestors on National Indigenous Veterans Day

EXPRESS PHOTO BY TWITTER
#NationalIndigenousVeteransDay is an opportunity for all Canadians to pay tribute to Indigenous Veterans for their service and sacrifice and to learn more about their heroic historic and contemporary contributions to Canada's military. Help the Express record the weather of the week and send in your photos of friends or families enjoying the outdoors. Email: weather@expressweeklynews.ca.



Fisher Branch RCMP investigating homicide

Staff

Fisher Branch RCMP responded to a report of a disturbance at a residence located in Fisher River Cree Nation on Nov. 6 at approximately 2:50 a.m.

Officers arrived at the residence to find an 18-year-old female with life-threatening injuries and a 16-year-old male with non-life-threatening injuries. The 18-year-old was transported to hospital where, on Nov. 7, she succumbed to her injuries. Her death is being treated as a homicide.

Fisher Branch RCMP, along with Major Crime Services and RCMP Forensic Identification Services, continue to investigate.

letter to the editor

Letters to the Editor: letters@expressweeklynews.ca

Everyone needs to do their part

Dear Editor,

Reading the *Express Weekly* this morning concerning the proposed transfer of patients to "who knows where" because of the anticipated spike in COVID cases has got me upset all over again. I understand the reasoning behind this move, but it is the people who most likely have followed the protocols for vaccinations, along with their families, who will be paying the price for relocation. And I won't even get started on the 130,000 Manitobans who have surgeries or procedures delayed in part by deniers. We all know what is happening and it is downright disgusting to

see the anti-vac group protesting the perceived attack on their civil rights, protesting, of all places, hospitals! Now their disregard of "taking care of our neighbours" is putting the good guys in a bind! In all likelihood, the hospitals will be filled soon with these folks who can't accept logic and science, but the system will take care of them to the detriment of the rest of us.

I will watch this sad scenario play out. Where is the "friendly Manitoban" when it comes to taking care of each other through a proven vaccination program?? Downright shame!

- David Tustin, Gimli

> Got something you want to get off your chest? How about an act of kindness to share?

Send your letters to the editor or acts of kindness to news@expressweeklynews.ca. Please include your name, address, and phone number for confirmation purposes.

The world is changing, and we've got big questions.



Share your thoughts on the decisions that will shape tomorrow's Manitoba Hydro.



Take a survey at hydro.mb.ca/future

Available in accessible formats upon request.



Pilot project to enhance forage productivity of agricultural Crown lands

Submitted by Government of Canada

The governments of Canada and Manitoba are investing up to \$1 million in the new Agricultural Crown Lands Forage Productivity Pilot Program aimed at improving productivity and sustainability of Agricultural Crown Land forage leases, Federal Minister of Agriculture and Agri-Food Marie-Claude Bibeau and Manitoba Agriculture and Resource Development Minister Ralph Eichler announced Friday.

"Canada's hardworking farmers and food processors have a solid track record of sound management practices," said the Honourable Marie-Claude Bibeau, Minister of Agriculture and Agri-Food. "This new pilot project will encourage Manitoba Agricultural Crown Land lease holders to adopt further beneficial management practices in their operations, helping them improve productivity while further protecting the environment."

The Agricultural Crown Lands Forage Productivity Pilot Program will provide targeted financial assistance to Agricultural Crown Land forage leaseholders to adopt best management practices to sustainably increase the productivity on their Agricultural Crown Land forage leases.

"This pilot project aligns directly with our Manitoba Protein Advantage Strategy of increasing forage productivity on our Agricultural Crown

Lands, and supports the mandate of the Agricultural Crown Lands program to optimize forage capacity," said Eichler. "Cost-shared programs such as this can help offset costs for leaseholders and reduce barriers to making improvements on Agricultural Crown Lands."

Eligible recipients must have an active Agricultural Crown Land lease that is in good standing and must complete an Environmental Farm Plan. Eligible items under the Agricultural Crown Lands Forage Productivity Pilot Program include grazing management plans, water source development and watering systems, cross-fencing for pasture management, and forage rejuvenation such as forage establishment and brush management. Improvements must be completed within the one-year pilot project. Farmers can begin submitting applications on Nov. 8.

"In managing tens of thousands of acres of Agricultural Crown land the lease holders provide considerable ecological goods and services that benefit all Manitobans, including carbon sequestration and providing habitat for a variety of plant and animal species," said Tyler Fulton, president, Manitoba Beef Producers.

"Implementing beneficial management practices helps contribute to improved soil and pasture and forage health on these lands, and we believe

the pilot program should prove to be valuable in this regard."

"This is a good first step in the right direction to help producers improve forage and pasture quality in the pilot project area," said Larry Wegner, chair, Manitoba Forage and Grassland Association. "As a pilot project, it also means the project has potential to help producers as required in those key program areas right away, with the potential for possible design and delivery in other key forage-producing areas across the province."

The Ag Action Manitoba Program Assurance: Environment Beneficial Management Practices (BMP) is also accepting applications starting Nov. 8. The program provides targeted incentives to farmers to advance the adoption of beneficial management practices. These practices reduce identified environmental risks, improve agro-ecosystem resilience, build public trust and improve environmental sustainability of farm operations in Manitoba.

Through the Canadian Agricultural

Partnership programming, the governments of Canada and Manitoba help farmers implement and adopt beneficial management practices on their farms that are identified in their Environmental Farm Plans.

The Partnership is a five-year, \$3-billion commitment by the federal, provincial and territorial governments that supports Canada's agri-food and agri-products sectors. This includes a \$2-billion commitment that is cost-

shared 60 per cent federally and 40 per cent provincially/territorially for programs that are designed and delivered by provinces and territories. For more information, visit <https://agriculture.canada.ca/en/about-our-department/key-departmental-initiatives/canadian-agricultural-partnership>.

For more information on the Agricultural Crown Lands Forage Productivity Pilot Program, and other Ag Action Manitoba-Assurance Beneficial

Management Practices programming in Manitoba, please visit www.gov.mb.ca/agriculture/canadian-agricultural-partnership/ag-action-manitoba-program/for-farmers.html.

"THIS IS A GOOD FIRST STEP IN THE RIGHT DIRECTION TO HELP PRODUCERS IMPROVE FORAGE AND PASTURE QUALITY."

Weeklong fundraiser stretches donations for foundations

Endow Manitoba Giving Challenge Nov. 15-21

By Nicole Brownlee

Endow Manitoba's Giving Challenge has returned with a weeklong opportunity for Manitobans to donate to community foundations.

The Giving Challenge started in November 2014 as a 24-hour fundraiser for foundations to stretch donations with the help of The Winnipeg Foundation and the Manitoba government.

The challenge was extended to a weeklong fundraiser in 2020 because Endow Manitoba expected COVID-19 to hamper raising money, said Denise Campbell, Endow Manitoba program specialist.

"It was such a success that the foundations wanted it to continue to be a full week," said Campbell.

The challenge begins on Nov. 15, National Philanthropy Day and will end on Nov. 21.

For every \$5 gift, The Winnipeg Foundation and the Manitoba government will each add \$1 to a maxi-

mum of \$2,000 per foundation.

The money will go towards foundations' unrestricted funds, which can be allocated to any applicant. Gifts to community foundations are pooled and permanently invested. Every year, the investments generate income that is distributed as grants to local charities.

Westshore Community Foundation

The Westshore Community Foundation has been involved with the Giving Challenge since it launched in 2014.

"All the money that's raised through the giving challenge goes directly into our community endowment fund," said Tim Arnason, president of the Westshore Community Foundation.

"It has a very, very direct impact on how much we're able to put back into the community."

Westshore offers around \$40,000 worth of grants each year with the

help of the Giving Challenge and other fundraisers.

"As that fund grows, we can put more money back into the community by way of grants."

Last year, Westshore raised \$20,000 from the Giving Challenge and awarded grants to organizations like Camp Arnes, the Gimli Unitarian Church and Meleb park.

Coldwell Lundar Community Foundation

The Coldwell Lundar Community Foundation has participated in the Giving Challenge since 2015, which has been a tremendous help for expanding their endowment fund, said Irene Runolfson, treasurer of the foundation.

"For the last couple of years, we've been able to make the maximum of the matching dollars," said Runolfson.

The Giving Challenge has generated \$80,852 for the Coldwell Lundar Community Foundation's unrestricted funds over six years.

"People rally around this foundation

and our little town and surrounding area, and they really support it well," said Runolfson.

"There's no donation too small, and all are gratefully received."

With the help of the challenge, the foundation has gifted grants to the local swimming pool, seniors' resource, library and more.

Icelandic River Community Foundation

The Icelandic River Community Foundation joined the Giving Challenge last year and raised around \$1,900.

"This is an opportunity for the communities to grow with their local foundation," said John Sigurdson, Icelandic River Community Foundation treasurer.

"It certainly is a worthwhile endeavour."

Sigurdson said the foundation hopes to attract more donations this year.

To learn more about how to donate to local community foundations, visit endowmb.org.

RCMP pay rise impact on municipalities yet to be confirmed

By Patricia Barrett

The Association of Manitoba Municipalities is expecting a pay rise for RCMP constables to result in increased costs for Manitoba municipalities that pay for policing services, but one municipality says it has no information on when or whether that will happen.

Administration for the RM of Gimli said it is aware of various media reports about the pay rise negatively impacting municipal budgets but has received nothing from the police service confirming that.

"We have not received any formal correspondence to say what our [policing] bill is going to be," said chief administrative officer Kelly Cosgrove

last Thursday, "or if we're getting an increase."

The RCMP's union and the federal government ratified an agreement that will see constables' maximum salary increase from \$86,110 to \$106,576 in April 2022. Constables will also receive retroactive pay since their last pay rise in 2016.

Gimli Mayor Lynn Greenberg said he has received no information from the service about the impacts of the pay rise and whether it will result in the RM having to pay more for policing.

"Nothing has been sent to us saying we'll have to pay an increase," said Greenberg last week.

In 2020, he said RM paid \$402,260.13



EXPRESS FILE PHOTO BY PATRICIA BARRETT
RCMP stop a driver on Highway 8 near Spruce Sands, north of Gimli.

for RCMP services.

The Express asked the RCMP if municipalities in Manitoba will be paying more for protective services next year to cover constables' pay rises, what those expected costs could be

and whether the RCMP has appraised municipalities of those costs.

The service acknowledged the questions but did not provide answers by a second deadline.

Dynacare offering free blood sugar testing for Diabetes Awareness Month

By Lorne Stelmach

A special campaign on now in conjunction with Diabetes Awareness Month is offering free testing while also raising awareness of the risk factors associated especially with Type 2 diabetes.

Dynacare and Diabetes Canada have teamed up for a fourth year to offer the free testing throughout November as part of the province's largest diabetes wellness initiative.

"This is a great complement to our campaign ... and we really need to raise the awareness," said Andrea Kwasnicki, Diabetes Canada regional director for Manitoba, Saskatchewan and Nunavut. "We have that campaign running right now so anybody

can go and have their test."

Kwasnicki joined Manitoba Health Minister Audrey Gordon and Dynacare's chief scientific officer Dr. Jenisa Naidoo for the campaign kick-off Nov. 3 in Winnipeg.

There was on-site A1C (blood sugar) testing open to the public followed by a panel discussion that evening featuring nurse consultant in diabetes management and educator Lori Berard.

Through the remainder of the month, there is free A1C testing being done at all Dynacare locations, which include those in Winkler and Morden.

Tests are being offered for free to at-risk Manitobans at no cost to the province. At-risk groups include, but

are not limited to, people who are overweight, over 40 or of Indigenous, African or Asian descent.

Dynacare will donate \$0.50 to Diabetes Canada for every A1C test in November up to \$25,000.

"On our website, there's also a risk assessment that people can do. It's a self-administered self-risk test," noted Kwasnicki. "We encourage them to

go to their family doctor and ask for a requisition; however, we do have some pre-signed requisitions that will be available at the Dynacare labs."

"Diabetes is a serious public health concern in Manitoba," said Dr. Naidoo. "We are proud to use diabetes awareness month to give Manitobans the tools they need to prevent or treat Type 2 diabetes."



NEW WINDOWS, NEW DOORS, AND SO MUCH MORE!



Get a **\$50 rebate*** on select ENERGY STAR® certified windows and doors.

Make your home:

- ✓ More efficient
- ✓ More comfortable
- ✓ More beautiful



Visit efficiencyMB.ca/windowsanddoors

*Terms and conditions apply.

Natural gas efficiency programs are funded in part by the Low Carbon Economy Fund.

Funded in part by:
Financé en partie par:
Canada



For Sale in Eriksdale, MB

24 2nd Street – \$129,900
3 beds, 1 bath, 1,015 sf,
built in 1974

FINANCIAL INCENTIVES TO THOSE WHO QUALIFY

To view or to see if you qualify, please contact:

Trevor Jaworski,
trevor.jaworski@gov.mb.ca
204-451-3960 or
1-855-201-4624



For Sale in Lundar, MB

34 Eirikson Drive – \$149,900
3 beds, 1 bath, 1,080 sf,
built in 1991

FINANCIAL INCENTIVES TO THOSE WHO QUALIFY

To view or to see if you qualify, please contact:

Trevor Jaworski,
trevor.jaworski@gov.mb.ca
204-451-3960 or
1-855-201-4624



November is Diabetes Awareness Month

By Lorne Stelmach

Diabetes Awareness Month throughout November as usual is much about raising both funds and awareness, but this year it is also a celebration.

A special event next week will honour the revolutionary Canadian discovery of insulin 100 years ago — a scientific feat that has changed the lives of generations of people living with diabetes.

“Diabetes impacts everybody in some way, shape or form, whether it’s ourselves, whether it’s a family member or a friend,” said Andrea Kwasnicki, Diabetes Canada regional director for Manitoba, Saskatchewan and Nunavut.

“It’s because the prevalence is so high ... 33 per cent is what we are looking at right now or one in three ... so look to your left, look to your right, and then look in the mirror.”

The activities this month include a World Diabetes Day livestream event the evening of Nov. 14 that will feature people impacted by diabetes, health-care providers and local entertainment from across Canada.

You can also take part in a 50/50 raffle, bid for items at a silent auction or purchase a “Cause Box” to add to your at-home viewing experience with a

box that is unique to Manitoba and includes special treats.

Here in Manitoba, they are also making particular note of DREAM (Diabetes Research Envisioned and Accomplished in Manitoba) as a key research theme at the Children’s Hospital Research Institute of Manitoba (CHRIM).

In 1985, a leading diabetes doctor and investigator on DREAM, Dr. Heather Dean, discovered the first case of Type 2 diabetes in a child.

Since then, Manitoba and CHRIM has become one of the world’s top research centers for Type 2 diabetes, which is the fastest growing chronic illness in Canada. Manitoba has one of the highest rates of Type 2 diabetes in children in the world.

“Very often, with Type 2 diabetes, signs and symptoms don’t show unless you’re getting tested,” noted Kwasnicki.

Not only is one Canadian diagnosed with diabetes the equivalent of every three minutes, but there are about 11 million Canadians who currently have diabetes or pre-diabetes. It is estimated it will reach 14 million and that perhaps 1.5 million may have Type 2 but not know it.

In Manitoba, the prevalence of dia-

betes is at about 403,000 or 28 per cent of population, and it is estimated it will be 488,000 or 31 per cent by 2031.

“And that’s just what they’re estimating ... we are saying it is because of our population, our aging population as well as the fact that we do have a high number of high risk groups that live in the province of Manitoba,” said Kwasnicki.

“Indigenous are more apt to develop type two diabetes, and because we do have a higher indigenous population per capita, our numbers are probably one of the highest in the country.”

A few basic facts about four types of diabetes:

- Type 1 — about 10 per cent of people living with diabetes have Type 1. People with Type 1 must inject insulin multiple times a day. It is diagnosed most often in children and young adults but can appear in older adults as well, and it cannot be prevented.

- Type 2 — about 90 per cent of people with diabetes have Type 2. The pancreas does not work properly, and the body cannot make enough insulin and/or cannot properly use the insulin it does make, but this may be prevented or delayed.

- Pre-diabetes — blood glucose levels are higher than normal but below

the level to be diagnosed. There is a higher chance of developing Type 2 diabetes. There may be no symptoms, but often there is still time to act.

- Gestational — develops during pregnancy and affects 3.7 per cent of all pregnant women, so it places women at higher risk for Type 2 diabetes.

There are a number of key risks as well that are linked to diabetes, including:

- Connected to 30 per cent of strokes and 40 per cent of heart attacks. You are three times more likely to be hospitalized for heart attack and stroke.

- Connected to 50 per cent of kidney failure resulting in dialysis. You are 12 times more likely to be hospitalized for kidney failure.

- Connected to 70 per cent of non-traumatic leg and foot amputations. You are 20 times more likely to be hospitalized for amputations.

- 25 times more likely to experience vision loss, and it is a leading cause of blindness in Canadians under 50.

On average, it can reduce your lifespan by five to 15 years.

For more information, including a self risk assessment test, head to www.diabetes.ca.

Pet food manufacturer signs agreement with RM of Gimli

By Patricia Barrett

A pet food company entered into an agreement with the RM of Gimli to set up a plant in the Gimli Industrial Park.

Canukshuk Animal Science is a CFIA [Canadian Food Inspection Agency]-certified pet food manufacturing and exporting company serving the global market, according to its website. The company uses wild fish and seal caught by Canadian commercial fishers, and meat products — chicken, turkey, pork, beef and bison — from certified Canadian processors.

“Based on export/import regulations and attributes of each material (protein and fat content, fiber structure, deformation in dehydration), different processing procedures will be tested and developed for each production,” states the company’s website. “We will produce 25 to 30 varieties with ethical and environmentally friendly approaches.”

A resolution to accept the agreement with Canukshuk was passed by Mayor Lynn Greenberg and councillors Richard Petrowski, Peter Holfeuer and Cody Magnusson (Coun. Thora Palson was absent) at council’s regular meeting on Oct. 13.

Other council news:

- Council accepted the donation of a dock that will be placed at a picnic area on Willow Creek.

Chief administrative officer Kelly Cosgrove said the company EZ Dock is donating and installing a dock that’s used for launching kayaks. This will be the second dock at the picnic site.

“The company said the dock will provide a stable and safe launching area for paddlers using the creeks and waterways,” said Cosgrove by phone.

The low-maintenance modular dock is made from polyethylene and is slip resistant, according to the company’s website. The company makes floating docks, boat ports, launches and gangways and other accessories.

- A majority of council agreed to purchase playground equipment from Blue Imp for \$16,174 plus applicable taxes for the Sandy Hook playground. Coun. Richard Petrowski voted against the quote. Coun. Palson was absent.

- Construction of a Dairy Queen on Centre Street that council approved earlier this year has yet to be started.

“We’ve approved quite a few businesses that haven’t started yet,” said the mayor by phone. “Dairy Queen has 12 months [standard municipal terms] to start building or they’ll have to re-apply.”

- A delegation appeared before council on Oct. 13, asking it for an extension on a project that was originally approved by council in 2014 and granted an extension in 2016. The delegation was composed of Mac Shahsavari, Judith Arnason, Patrick Patterson and Victor Borgen. Council agreed to refer the matter to the RM’s legal counsel.

- Council granted a permit to the Interlake Radio Control Model Club to continue operating at the south end of the Industrial Park.

“They’ve had their model plane shows there every



EXPRESS PHOTO EZ DOCK WEBSITE

EZ Dock donated a modular dock for kayak launching (may not be exactly as shown) to the RM of Gimli. The company will install the dock at the Willow Creek picnic area.

year for many years and they’ve been shut down because of COVID,” said the mayor. “But we always give them a permit.”

- Council authorized CIMCO to install a chemical feeder to extend the life of the existing condenser at the arena’s refrigeration plant at a cost of \$6,250 plus applicable taxes.

- Council approved a resolution to remove Coun. Peter Holfeuer from the Icelandic Festival Committee.

- Council approved the appointment of Gimli resident Leona Johnson to the Active Transportation Trails Committee.

Manitoba

Winter Explorer Ideas



SCAN THIS QR CODE to open the Winter Explorer Guide on your phone.

Cultural Excursions & Cozy Getaways

This winter, Travel Manitoba invites you to explore every snowy corner of our province. From world-class museums and stellar performing arts groups to glorious spas, heat up the season with our Winter Explorer Guide.



↑ Canadian Museum for Human Rights

TRAVEL SAFE IN MANITOBA

Keep yourself and others safe as you explore Manitoba. Remember to:

- ➔ Wash or sanitize your hands frequently
- ➔ Wear a mask
- ➔ Practice physical distancing
- ➔ Stay home when you're sick
- ➔ Be prepared to provide proof of vaccinations at restaurants, events and museums
- ➔ Follow all local travel restrictions

Travel Manitoba cannot guarantee that the attractions and businesses featured will be open and operating as described. While we strongly recommend that all tourism businesses adhere to the public health and safety measures set by the Government of Manitoba, we cannot guarantee the compliance of any business featured in this content. Please contact businesses directly for operating hours and policies.

PHOTO: LINDSAY REID



↑ Qaumajuq

QAUMAJUQ

WINNIPEG

Winnipeg Art Gallery's new addition, Qaumajuq, houses more than 14,000 pieces of contemporary Inuit art in a visible vault that reaches three storeys high. The first of its kind in the world, Qaumajuq combines art and technology to create direct connections to the land, people and culture of Canada's North.



↑ Solstice Spa

SOLSTICE SPA

MANITOBA WEST

After enjoying **Riding Mountain National Park's** numerous ski and snowshoe trails, head to the warm water of the Equinox pool at Elkhorn Resort for a mineral bath infused with natural crystals.

PHOTO: DAN HARPER



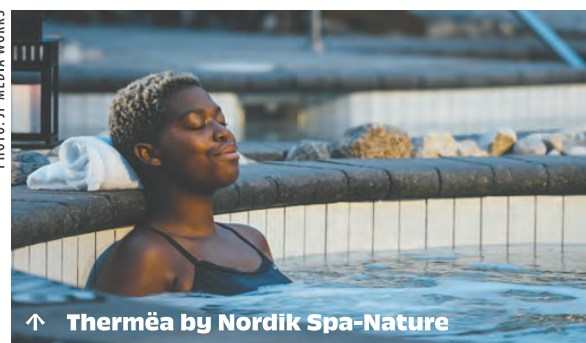
↑ New Icelandic Heritage Museum

NEW ICELANDIC HERITAGE MUSEUM

MANITOBA CENTRAL

This signature museum in Gimli shares the struggles and triumphs of the first Icelanders in the region in 1875. Included are stories about the first Ukrainians in the area as well as the important role of the Indigenous figures, such as John Ramsay, in the survival of these first settlers.

PHOTO: JP MEDIA WORKS



↑ Thermëa by Nordik Spa-Nature

THERMËA BY NORDIK SPA-NATURE

WINNIPEG

Known as one of the city's premiere spas, Thermëa offers an outdoor oasis to be thoroughly enjoyed in winter. The signature Thermal Experience (hot-cold-rest cycle) is the ultimate way to relax, and you can enjoy a variety of dry saunas (don't miss the Aufguss ritual) and steam rooms.

More Arts & Culture Experiences



↑ Manitoba Museum

More Spas & Relaxation Experiences



↑ Ten Spa

See the full guide and more winter inspiration at manito.ba/winter-explorer.

Manitoba encompasses Treaty 1, 2, 3, 4 and 5 Territory and communities who are signatories to Treaties 6 and 10. It is the original lands of the Anishinaabeg, Anish-Ininiwak, Dakota, Dene, Ininiwak and Nehethowuk and the homeland of the Métis. Acknowledging these original caretakers is a reminder of our unique heritage, our important relationships and our obligations to and shared responsibilities with Indigenous peoples.

Gimli Art Club finishes another season of painting the harbour wall

By Sydney Lockhart

Every summer, members of the Gimli Art Club volunteer their time to upkeep and create art for the harbour walls. This year an old piece was revamped into a new creation by Winnipeg Beach local Mae Vermeulen.

"They've been painting on the wall for over 30 years, and some of those members have already passed away," she said.

Vermeulen took on the project of redoing a worn-down piece that hadn't been touched up in many years.

"This particular mural was so destroyed that the artist's name wasn't on it. But that woman has passed on, and because I completely had to take that mural off the wall, it is going to be an original by me now," she said.

Vermeulen said she had never thought of doing an original piece on the wall, but that the organizer asked her to do this piece and she said yes to the opportunity.

"There's a number of people who put new murals on or repair the murals that have been there for numerous years," she said, "Then there's just a number of us who just say we'll do two murals a year and that's the process."

Throughout her life, Vermeulen has always painted and enjoyed drawing. After she retired, she decided to join the club to further her interest in art.

"I just thought when we moved out here being retired, I thought that's what I need to do if I'm going to kind of get better at this. And it really helps you watch all these different people using all these different mediums. It makes you aware of products, media that you haven't even heard of," she said.

Making Christmas cards and painting at home with her sister were art forms that started to interest her in art.

"It's just a very relaxing sort of hobby, I guess; it's very therapeutic," she said.

During heavier provincial restrictions due to the ongoing pandemic, the art club could not gather in their space. However, Vermeulen said she was still able to work on the harbour murals because they were outdoors.

Every year artists work on touching up or painting on the wall. She said she ran out of time to finish up the details because of the weather but is excited to finish next year with two more flowers she wants to paint to finish it.



EXPRESS PHOTO BY JO-ANNE PROCTER
Winnipeg Beach artist Mae Vermeulen was painting a mural of flowers on the Gimli harbour wall on Oct. 7.

"But, honestly, the wonderful thing about working on the wall is all of the people that you meet. There are so many people that thank you for maintaining the wall. I didn't realize that so many people cared."

Noventis Gives Back

Involved in a community project that could use a financial boost?

We are offering an extra **Community Connections Program** intake in 2021 and the deadline is **November 29th**.

To learn more or apply, visit noventis.ca or email communityconnections@noventis.ca.



noventis.ca



From the Government's Election Platform:

Canada Is Set to Become a Global Leader in Levelling the Playing Field for Local News

Levelling the Playing Field with Digital Giants

In 2021, most Canadians get their news from digital platforms which drives key advertising revenues away from Canadian news organizations and towards platforms owned by social media companies and digital giants.

A re-elected Liberal Government will:

- Introduce legislation, within 100 days, that would require digital platforms that generate revenues from the publication of news content to share a portion of their revenues with Canadian news outlets. This legislation would be based on the Australian model and level the playing field between global platforms and Canadian news outlets. The bill will also allow news publishers to work together to prepare for collective negotiation.

In a democracy, nothing is more vital than a healthy, vibrant local news media. But the threats from Big Tech are increasing every day.

The government's 100-day plan will place Canada in the front ranks of global leadership standing up for local news. The commitment is clear. All parties in Parliament support decisive action. Now is the time to act and pass legislation by early 2022.

News Media Canada, representing hundreds of trusted titles in our print and digital media industry, and our news publishing partners across Canada and around the world, call on Canadian parliamentarians to work together to level the digital playing field between local news and Big Tech.





REMEMBRANCE DAY

Lest We Forget
Thursday, November 11

Lake Winnipeg fisher identifies underwater munitions dump site north of Hecla

By Patricia Barrett

It's no secret that in the 20th century the Canadian military used lakes and oceans as disposal grounds for ammunition including bullets, mines, bombs and chemical weapons.

It was a common exercise that occurred around the world, leaving behind potentially deadly unexploded weapons and toxic emissions that destroy or contaminate aquatic habitats. Some underwater munitions sites in Canada have been publicly identified, but the extent of the problem has yet to be revealed.

A Lake Winnipeg commercial fisher, who lives in Gimli and has been on the lake for nearly the whole of his life, says shells likely used for .30-30 rifles were dumped "by the barge loads" into the lake some time during or after the First World War.

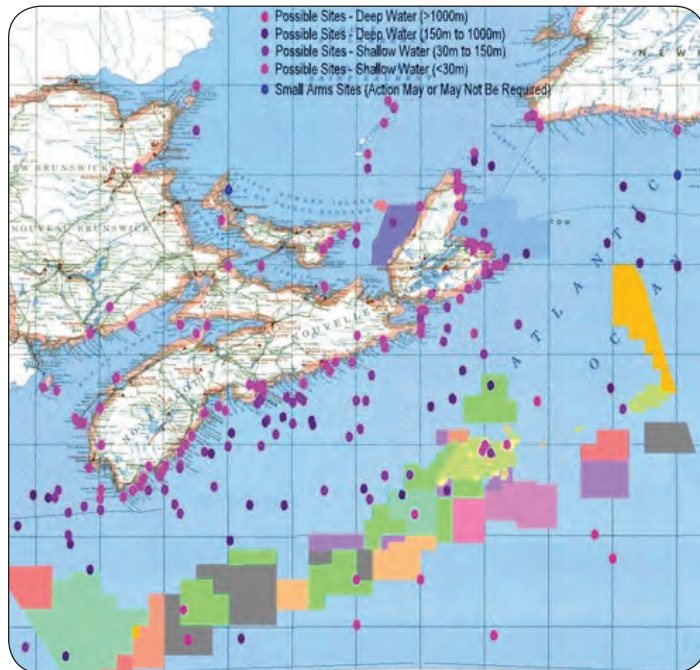
Eighty-eight-year-old Robert T. Kristjanson, who still actively fishes and will be starring in a new series of *Ice Vikings*, said his grandfather and his grandfather's fishing partner from Hnaua operated a fishing station on the east shore of Lake Winnipeg, across from the Calder's Dock-Pine Dock region, where the shells had been dumped.

"The shells had already been dropped when my mother and dad were at the camp in the 1930s. They [the military] came in with barge loads and went down to the bay where they dumped all these shells," said Kristjanson last week. "There were so many of them that they were sticking out of the water."

The fishing station was in a harbour near a pre-1914 quarry and a mill that processed granite for household dishes, he said. A railway in the area hauled the stone to Winnipeg.

Kristjanson said he thinks the shells were dumped in Lake Winnipeg because it was an easy way to get rid of them.

"I guess there was so much ammunition around and they didn't recycle



MAP COURTESY OF TERRANCE LONG

Atlantic Canada coasts are littered with munitions dump sites and possible dump sites.



CANADIAN WAR MUSEUM

Ross rifles were produced in Canada from 1903-1918. The Ross rifle MK III [1910], shown here, was found unsuitable for trench warfare during the First World War but useful for snipers.

it. They were just trying to get rid of it," said Kristjanson. "These were live shells, probably for .30-30s. These would fit a man's rifle."

Because they were so easy to retrieve from the bay, fishers would use part of the shells for sinkers to keep their nets under the water, he said.

"On the end of it was a big piece of lead, the shell, that killed people. Fishers would use the lead on their nets for sinkers because they were hard to get at that time," said Kristjanson. "Or some men would take them and use them for target practice. There were piles of them right in the middle of the bay."

In the 1980s, Kristjanson said he

went back to the site with family members and found remnants of the shells.

"My dad, brother and I went there in the 1980s. We took my boat and my dad showed me where my grandfather and his partner's fishing camp was and the fishing station," said Kristjanson. "He showed us where the railroad was and where they used to haul the crushed rock. That's where we picked up some ends. All that was left were the ends off the shell, the brass end."

He said in those days no one talked about the impact of potential munition pollution on the environment or whether there were human health

concerns.

Retired Canadian Forces military engineer Terrance Long, who has over 30 years' experience in explosive ordnance disposal and is a recognized leader on the clean-up of underwater munition sites, told the *Express* he could not find a direct reference to munitions having been dumped in Lake Winnipeg, but both the army (1908) and the air force (1925) were present in the area.

"There are most likely munitions in the lake," said Long by email last week. "It was a common practice to dump old, obsolete, damaged, time-

Continued on page 16



EXPRESS PHOTO BY PATRICIA BARRETT


Lake Winnipeg commercial fisher Robert T. Kristjanson said shells that were likely used in .30-30 rifles were dumped by the barge-load into the lake north of Hecla Island during or after the First World War.



Selkirk Office 184 Main St. 204-482-5806	Gimli Office 56 Centre St. 204-642-8501	Arborg Office 315 Main St. 204-376-2679	Riverton 33 Main Street 204-378-5172	Peguis Peguis Mall 204-645-4078
---	--	--	---	--

www.interlake.mb.ca

Lest we forget



Rural Municipality of Armstrong

Lest we forget.
Reeve and Councillors





Large military badges have surprising history

Ingenuity and wanting to show support for our veterans resulted in creative way to bring about art

By Katelyn Boulanger

If you've been into the Selkirk Legion over the years, you may have noticed the large Canadian Forces badges that hang high on one of the walls.

These three badges are very large and look like they were made especially for that spot in the legion — because they were. Local sign artist John Pawluk designed and donated them to the legion in the 1980s. They now acknowledge members from these three branches of the military who served and continue to serve our country.

The story of these badges starts with a member of the legion board of directors who thought that having large replicas of the badges representing the Royal Canadian Air Force, Royal Canadian Navy and the Canadian Army on the wall would be a great addition to the Selkirk Legion.

John Pawluk, at the time, was a sign designer and painter for the provincial government and made many of the signs for the province's provincial parks, including many that are still around today. He has since retired from his profession; however, his recent work can be seen in Selkirk at Red Feather Farm as he beautifully restored his original design of the park's sign last summer.

Unlike Pawluk's conventional signs, however, the badges at the legion are quite unique as they are made from salvaged metal from car roofs.

"[My] next-door neighbour who happened to be the president [at the legion] when they brought it up again, he came over and asked me if I could make little badges. He gave me the three badges and [asked me to] enlarge them and I knew a fellow that had an auto wrecking yard. I got three car roofs from him," explained Pawluk.

He says that it wasn't just him but many members of the community that came together to make the badges for the legion with him bringing the car roofs to a friend of his with an autobody shop who cut out and finished the metal of the car roofs so they could be painted and another friend of his designing the brackets at the back of the these over 40-inch diameter badges so they could be hung safely and also taken down safely for cleaning when needed.

"I brought them home and I did all the artwork in my basement and I donated them to the legion," said Pawluk.

He says that this project not only allowed him to give something back to our veterans but introduced him to a wonderful community, since to say thank you for the donation, the legionnaires gave Pawluk a membership and he has continued to be a member and meet up with a group of friends at the legion ever since.



EXPRESS PHOTOS BY KATELYN BOULANGER

John Pawluk with his recently restoration to the Red Feather Farm sign.



Canadian Forces badges designed for the legion by Pawluk in the 1980s.

J. Brandt ENTERPRISES
Arborg, MB
204-364-2775
www.jbrantent.com

Smitty's
321 Main Street,
Arborg
204-376-5242
www.smittysturniture.net
FURNITURE & APPLIANCES

Husqvarna **STIHL HONDA ECHO TORO**
STRINGER RENTALS SALES & SERVICE
99 7TH AVE GIMLI
204-642-7490
www.stringerrentalsandpower.com

ARBORG
204-376-2647

Honouring the fallen
Town of
Winnipeg Beach
Council and Staff

RURAL MUNICIPALITY OF WEST INTERLAKE
Reeve, council and staff
www.rmofwestinterlake.com

REMEMBRANCE DAY

Thursday, November 11



Three ways to support Canada's veterans year-round

On Remembrance Day, Canadians across the country commemorate the brave men and women who died in the line of duty as well as those who currently serve in the armed forces. However, your recognition doesn't have to be limited to Nov. 11. Here are three ways you can support Canadian veterans year-round.

1. Donate to a reputable charity

There are a number of charities, including the Poppy Fund, VETS Canada and Wounded Warriors Canada, doing critical work to empower and support veterans from coast to coast. Donating even a small amount to a reputable organization can help improve the circumstances of those who risked their lives for their country.

2. Volunteer at a Royal Canadian Legion

There are more than 1,300 legion branches across the country. As Can-

ada's largest veteran service organization, the Royal Canadian Legion (RCL) offers outreach and assistance programs for veterans and their families as well as community services and support. Volunteering at your local legion branch is a great way to make a real difference in the lives of those who served.

3. Visit a veteran in your community

Veteran Affairs Canada (VAC), in collaboration with the RCL, runs an initiative that facilitates face-to-face visits with veterans in retirement and long-term care facilities. These visits provide social interaction and a sense of community to individuals who may not otherwise receive many visitors. Spending time with a veteran can have a major impact on their life as well as your own.

This Remembrance Day, know that Canadian veterans need your help year-round and consider taking steps to offer your support.



GM Giesbrecht & Sons
Canada Your car. Your choice. Your way.
CHEVROLET • BUICK • GMC
HWYS 8 & 231, TEL: 204-642-5133 • TOLL FREE 888-296-9666
www.giesbrechtandsons.com

THE EXPRESS
WEEKLY NEWS
204-467-5836

GIMLI Ford EST. 1977
16-7th Ave, Gimli 204-642-5137
www.gimliford.ca

WIWD West Interlake Watershed District
204-762-5850

NAPA AUTOPRO Nordal's Napa Autopro Mechanical Shop
Arborg, MB 204-376-5198

GIMLI #109097 Hwy 9, Gimli
204-642-7017
e: skidoo@mymts.net
ski-doo

Interlake Auto & Tractor Parts Ltd.
Arborg, MB (204) 376-2667 iauto@mymts.net

Gilbart Funeral Home Ltd.
Chapels in Selkirk & Gimli
1-800-230-6482
• 1-204-482-3271
www.gilbartfuneralhome.com



Lest we forget.

In honour of **Remembrance Day**, all Noventis branches, iTMs and the contact centre will be closed on **November 11th**.

noventis.ca



We Remember November 11



Derek Johnson
MLA for Interlake-Gimli
interlakegimli@me.com
Gimli 204-641-8525 | Arborg 204-376-3401



REMEMBRANCE DAY

Lest We Forget
Thursday, November 11

> MUNITIONS DUMP SITE, FROM PG. 13

expired or unwanted munitions into lakes and the ocean as a cheap means of disposal."

Canada started dumping munitions in water bodies in the 1910s, he said, and continued most years up until the mid-1970s when "countries began to understand the environmental impacts they were creating."

Long is the chair of International Dialogues on Underwater Munitions (IDUM), a non-governmental organization he founded in 2004 to persuade governments to clean-up underwater munitions dump sites containing all classes of munitions — biological, chemical, conventional and radiological. He's also co-director of three programs (with NATO and the European Union) that deal with underwater chemical weapons.

Long spoke about underwater munitions last week at the COP26 climate summit in Glasgow, he said, and is scheduled to address the European Parliament in Brussels in a week or so on the remediation of dump sites in European waters.

Long said "hundreds of millions of tons" of munitions have been dumped

into lakes, seas and oceans around the globe, including in Canada. Sites off Nova Scotia — including Bras D'Or Lake on Cape Breton island — and Newfoundland have been identified as well as sites on the Pacific coast.

Governments and media haven't given the issue the attention it should be getting, he said, given the environmental degradation on aquatic ecosystems and human health concerns.

Munitions can release chemical compounds that destroy or contaminate fish stocks and leach human carcinogenic compounds. Scientists believe that some of the chemicals may dissipate in water, but substances such as arsenic can bioaccumulate in the food chain. TNT [an explosive], which breaks down to create a human carcinogen, can cause algal blooms, bleach and kill corals, create black spot disease in lobsters and crabs and change the acidity and temperature of water, which has spin-off effects on global warming.

"I need to be very clear: our oceans, seas and lakes are dying from the legacy of underwater munitions..."

"I need to be very clear:

our oceans, seas and lakes are dying from the legacy of underwater munitions. They are silent killers destroying Canada's potential for a blue economy [a concept which encourages the stewardship of oceans]," said Long.

Not only are "decaying toxic muni-

tions" destroying aquatic habitats, but they also have the potential to kill humans should they wash up on beaches. People shouldn't handle them. They should call the police, said Long.

"A few years ago, I received a call from a family in Ajax [Ont.] that had picked up a bomb on the beach in Halifax and drove it home with their children. They put the bomb in their living room, took a picture and sent it to me. I told them to call the police. The bomb squad came and found that it was a live bomb," said Long. "DND [Canada's Department of National Defence] knows there are bombs on Halifax beach because it's near a bombing area, but they do not put up any signs on the beach or do any risk mitigation to tell people not to pick them up or stay away."

DND said in 2004 that there were around 60 high priority sites in Canada — and today there still are 60 high priority sites, said Long, citing the department's rather lax response to the issue.

"When I did a Senate hearing in

2004, there was a unanimous decision on three points. One was to get more finance and scientific research to address this. The second was to have other government departments involved — other than DND. The third was to have the government call on the United Nations for an urgent conference with coastal countries," said Long. "Senators were unanimous in their decision on all three points, but what happened after the hearing was they gave it all back to DND, and they never called for that conference."

The *Express* reached out to DND with questions such as how many pounds or tons of ammunition were dumped into Lake Winnipeg at the site Kristjanson identified, other sites around the lake where this may have occurred, whether DND has done a survey of munitions sites around the lake and how it intends to move forward.

A DND spokesperson acknowledged the questions, but no answers were provided.



In Remembrance

**Rural Municipality
of Gimli
Council and Staff**







LEST WE FORGET

Reeve and Council of the RM of Coldwell






**Municipality
of Bifrost-Riverton**
Phone 204-376-2391
Reeve, council and staff



Lest we forget



JAMES BEZAN MP
Selkirk—Interlake—Eastman

OFFICE@JAMESBEZAN.COM
JAMESBEZAN.COM • 204-785-6151

Gimli's Operation Red Nose cancelled for second year

Staff

It is with a heavy heart that Operation Red Nose announces that its safe ride service will not be taking place in 2021. Since deploying the annual large-scale service depends, amongst other things, on the public health situation, the organization has no choice but to push the very appreciated service to next year.

"We were really looking forward to bringing the safe ride service back this year. We have put a lot of thought into our decision, and it was a very hard one to make. We were hoping, up to the very last minute, to be able to announce that we would be back on the road this year," says Anne-Marie Audet, executive director at the national Operation Red Nose office. She adds, "The safety of our volunteers and clients is our priority, so the hard choice



to push our safe ride campaign to 2022 is ultimately the most reasonable one given the current health situation."

Safety Services Manitoba supports Operation Red Nose in the decision made. "Given the current

public health situation, we understand and support Operation Red Nose in this important decision. In all circumstances, Operation Red Nose and Safety Services Manitoba invite you to plan for a safe way to get home by calling a friend, a relative, a cab or designating a sober driver," says Ron Janzen, executive director at Safety Services Manitoba.

Operation Red Nose is a non-profit organization that promotes responsible behaviour to help prevent impaired driving. The organization provides a volunteer chauffeur service, the benefits of which are redistributed to help fund local youth and amateur sports initiatives.

Gimli is one of two communities, including Selkirk, that is affected by the announcement and will not be able to operate the community service in 2021.

Building supply store opens in Ashern after Eriksdale inferno

By Nicole Brownlee

McMunn & Yates Building Supplies is opening a new location in Ashern after a fire destroyed their historic building supply store's previous storefront in Eriksdale.

"This move comes after the devastating loss of our Eriksdale store," said Jason Yates in a press release on Nov. 1.

"The store had a strong and long legacy, dating back to the Smith family, the original owners of the store."

The Smith family owned a lumber operation in Eriksdale since 1915.

McMunn & Yates acquired the Smith business in 2001, building an approximately 270-square-metre retail store and attached warehouse. On May 20, 2020, the Eriksdale store burned down after a garbage bin fire spread to the building.

A heated shed in the same lot as the Eriksdale store's lumber and warehouse became a temporary storefront to offer limited supplies to the community and contractors.

"The patience that our staff and customers have shown while we worked through the challenges of this situa-

tion is greatly appreciated," said Yates.

Staff from the Eriksdale location are heading over to the new Ashern supply store, said Jordan Bazylo, McMunn & Yates regional sales manager, in addition to several new staff members to accommodate the larger store.

The Ashern location will contain a 720-square-metre store with an 810-square-metre warehouse storage

building.

"We believe we have found a great opportunity in Ashern to create an operation that will meet the needs of homeowners, contractors, builders and community groups," said Yates.

Bazylo expects the store to open in a few months.

Remembrance DAY november 11th SERVICES

All attending services must have proof of double vaccination and masks are required.

2021 Remembrance Day Ceremonies

Legion	Location	Date	Time
Winnipeg Beach BR 061	Legion -	Thurs. Nov. 11	
Invite only. Community members invited to lay wreaths at cenotaph on their own time.			
Eriksdale BR 140	Eriksdale Recreation Centre	Thurs. Nov. 11	10:45 AM
Arborg Legion BR 161	Arborg-Bifrost Community Centre	Thurs. Nov. 11	10:30 AM
Lundar Legion BR 185	Royal Cdn Legion #185	Thurs. Nov. 11	10:15 AM

PHOTO CALENDAR

Merry Christmas

Memories you can cherish all year round!

- Hangs as 11"x17"
- One photo/page
- Printed full colour
- Printed on heavier matte paper
- Stapled on spine
- Spiral binding & extra photos available for add'l charge

\$35.99 + TAXES
Add'l copies of the same calendar **\$5.00 + taxes**

January 2022

Sunday	Monday	Tuesday	Wednesday	Thursday	Friday	Saturday
						1 New Year's Day
2	3	4	5	6	7	8
9	10	11	12	13	14	15
16	17	18	19	20	21	22
23	24	25	26	27	28	29
30	31					

Phone: 204-467-5836
Email photos to: igraphic@mymts.net

Graphics **Tribune** Stonewall Teulon

Incredible Creatures: Nuts over red squirrels

By John Gavloski

One animal that we will continue to see in our yards and wild areas all winter is the red squirrel.

These playful acrobats can keep us entertained on all but the coldest days. In this month's Incredible Creatures, we will explore some of the behaviours and antics of red squirrels.

Ten species of squirrels can be found in Manitoba. Two are species of chipmunks, three are types of ground squirrels, we have a species of flying squirrel called the northern flying squirrel, and three species of tree squirrels (including the red squirrel). Tree squirrels are highly specialized for living in the trees; they typically have larger eyes and ears than ground dwelling squirrels, as well as longer, bushier tails to better balance in the treetops. With their well muscled hind legs for leaping and curved claws for climbing, tree squirrels rely on trees for shelter and food, and use the maze of branches as transportation routes. While most species of ground squirrels hibernate in the winter, tree squirrels are non-hibernating. In northern areas they must store enormous amounts of food to survive the winter.

Red squirrels are easy to identify by their rusty red coats, white undersides and white eye rings. They get all new fur on their bodies twice a year, and once a year on their tail. Mothers gives birth to one to eight young, averaging about four. Newborn red squirrels have no hair except for whiskers and some soft hairs on their chins. Their eyes open after 26 to 35 days, and they have all of their fur after 40 days. The young drink milk from their mother for the first 70 days.

Red squirrels average lifespan is five years. However, red squirrels have difficulty surviving past one year old. Only 25 per cent of red squirrels survive past one year.

To communicate, a red squirrel makes a lengthy descending trill and a chatter of assorted notes and chucks. They use vocal communication to advertise their territories and to threaten other squirrels. Red squirrels may even be able to recognize each other by individual calls.

Red squirrel nests are in holes in trees, in the leaves, or can even be underground. They make nests out of grass, moss, parts of plants, shredded bark, feathers or fur. They usually build nests within 30 metres of where they have stored food.

Red squirrels spend the day collecting cones from pine, spruce or fir trees, seeds, nuts, fruit and mushrooms. They will also feed on buds, flowers, bark, berries, insects, eggs, mice and young of small mammals when the opportunity arises. Seeds of pine cones are a favourite.

Some of this food is stored for the winter. They store nuts and seeds in piles called middens under logs, at the base of trees and underground.

They store up enough food to last one or two seasons.

Red squirrels remain active throughout the winter, except in severely cold weather. In the winter, red squirrels peak their activity around midday to take advantage of warmer temperatures. Adverse weather may result in reduced activity, but it is unlikely that squirrels will remain in the nest for more than one day without foraging. As the temperatures drop, squirrels become less active, and it has been reported that at temperatures of about -32 degrees Celsius, red squirrels become completely inactive.

Even in the cold of winter, red squirrels can keep us entertained with their acrobatics and chatter.



EXPRESS PHOTO BY JOHN GAVLOSKI

Ten species of the red squirrel can be found in Manitoba.

Farm Credit Canada enhances patient care throughout the region

Submitted by IERHA

Recently, the Interlake Eastern Health Foundation was gifted \$2,000 from Farm Credit Canada. Of this money, \$1,250 of the donation was for the Stonewall Hospital to purchase an isolation cart and \$750 for the Eriksdale Hospital to purchase a pulse oximeter.

Farm Credit Canada is Canada's largest agricultural term lender. This organization's purpose is to enhance rural Canada by providing specialized and personalized financial services to farming operations, including family farms.

Kim Friesen, FCC relationship management associate says that community investment funding is one way that FCC is enriching the communities where we live and work.

"Our projects make positive changes in our communities. In particular, we work to reduce hunger, promote farm safety and through ag education partnerships, we promote agriculture as a vibrant, forward-looking indus-

try. FCC was pleased to partner with the Interlake Eastern Health Foundation to provide funding for medical equipment needs at the Eriksdale and Stonewall hospitals," says Friesen.

Interlake Eastern Health Foundation executive director Pamela McCallum says the additional equipment will impact patients and staff in a positive way.

"The addition of much-needed equipment in Stonewall and Eriksdale will increase efficiency when caring for multiple patients within the facilities. We are honoured to partner with the Arborg FCC office on these donations which will enhance patient care in our region," says McCallum.

Interlake Eastern Health Foundation's mission is to raise funds that support health care in the Interlake-Eastern health region. For more information, visit www.iehfc.ca or contact Pamela McCallum, executive director of the Interlake Eastern Health Foundation, at 204-785-7044.



EXPRESS PHOTO SUBMITTED

Farm Credit Canada relationship management associate Kim Friesen, left, and FCC relationship manager Christine Anderson presented a cheque for \$2,000 to IERHA recently.

MB Farm Women's Conference sessions online next week

Zoom presentations open to all Nov. 15, 17

By Ashleigh Viveiros

The Manitoba Farm Women's Conference is back for another round of virtual sessions.

In honour of Manitoba Farm Women's Week Nov. 14-20, MFWC is hosting a pair of Zoom presentations on Monday, Nov. 15 and Wednesday, Nov. 17.

The online gatherings follow on the heels of a similar series held earlier this year, which MFWC committee member Tracy Chappell says were quite well-attended.

"I think it's something where people were looking for something to offset COVID — something to do — and that's why we're doing it again because we feel it's time to connect again," she said. "Although we can't connect in person like we'd like to, this is a way we can do it virtually."

Since its creation 30 years ago, the conference has sought to provide an opportunity for participants to network and share knowledge about the benefits and challenges of farm and

rural living.

"It's a chance to get together and laugh and commiserate with each other," Chappell said, noting some farm families may have had a banner year, while others are struggling. "We've all been there before and so sometimes the older ones can impart their wisdom onto the younger ones. It's about being there to support one another."

"I think sometimes [living rurally] we feel distanced. But you're not alone."

This year's conference theme is "Gratitude and Wellness Within the Farming Community."

The Nov. 15 session, featuring guest speaker Kim Moffatt, will focus on mental health as it relates to those who make their living in the agricultural world.

Moffatt trained in psychiatric nursing and is a certified crisis counsellor who worked for the Manitoba Farm, Rural and Northern Support Services as well as the Manitoba Suicide Pre-

vention Support Line.

She is able to use her own experience as a former farmer to help understand and connect with producers who are facing increasing stress levels.

"We really feel that mental health is something we're all learning about and realizing the importance of," said Chappell. "She going to come in and give us some tips on what to look for, what's available for people who are suffering."

Then, on Nov. 17, participants will hear from Portage la Prairie area producers Mark and Yanara Peters of Spruce Drive Farms and Stone Shed Gardens.

Together they produce 100 acres of seed potatoes and about 500 acres of grass and alfalfa hay alongside a new flower business to bring colour to people's lives.

Also on tap for the evening are Elise and her daughter Emily from Porch Drop Produce, who are bringing rural produce into the urban markets in Winnipeg.

It's a chance to showcase some options for shopping locally heading

into the holiday season, Chappell said.

"I think the pandemic, if it's done anything, has made us realize that there's a lot of things in our own backyards that maybe we didn't realize were out there," she said, explaining the speakers will share their journeys and methods of reaching out to people, especially those who may not be connected to the rural areas.

MWFC is also encouraging people to share made in Manitoba products and businesses with them on their social media pages so they can help get the word out.

The sessions both run from 7 to 8 p.m. and they are free and open to all. Pre-registration is not required: simply join the meeting via Zoom at <https://us02web.zoom.us/j/7062595483> to take part (or head to the Manitoba Farm Women's Conference's Facebook page for a clickable event link).

You can also email mbfarmwomen-sconf@gmail.com for more information.

Gimli children to benefit from K-Bags for Kids

Submitted by Lynn Hoplock

Over 40 children will benefit from this year's K-Bags for Kids Kiwanis Club of Gimli and District initiative.

The Club is pleased to announce a new backpack initiative for the community. Sam Sekhon and his wife Terry came up with the idea of "K-Bags for Kids." This was Sam's final year serving as an international trustee for Kiwanis International and he wanted to come up with an initiative to give back to the children in our communities; hence the idea of K-Bags for Kids.

This idea involved gathering backpacks and school supply goodies that could be distributed to children within our local schools.

There will be four schools in Evergreen School Division that will benefit from the K-Bags for Kids initiative. These four schools are Winnipeg Beach School, Sigurbjorg Stefansson Early School (SSES), Dr. George Johnson Middle Years School and Gimli High School. Each school will receive two backpacks per grade. The school administration will determine how the back packs will be distributed within the school.

The Kiwanians would like to thank the donors and the members of Gimli Kiwanis Club for helping to make this initiative successful. It is their hope that this project will continue to grow and be a yearly event.

The backpacks were delivered to the schools on Monday, Nov. 8.

Kiwanis is an international organization designed and created with the mission of impacting children's lives through a variety of programs and services one child and one community at a time.



EXPRESS PHOTO SUBMITTED

The Kiwanis Club of Gimli and District volunteers, left to right, Mike Owen, Margaret Stanicky, Lynn Hoplock (president), Frances Petrowski, Fran Lewis, Terri Conley and Norma Sharp with the backpacks collected for the K-Bags for Kids initiative.

sports & recreation

INSIDE > OUTSIDE > UPSIDE DOWN

Thunder roll past Parkwest in RMFL semifinal

By Brian Bowman

It wasn't easy, but the Interlake Thunder certainly made it look that way on Sunday afternoon.

The Thunder rolled to a very impressive 70-0 victory over the Parkwest Outlaws in a Rural Manitoba Football League semifinal in Stonewall.

"There is something to be said for having a good week of practice and we had a really strong effort and complete game out of the team. You're going to get breaks when you play that way," said Thunder head coach Mitch Obach. "We were really pleased with the effort and hopefully we can build on that this week."

The Thunder's Tucker Knutson had a great game at quarterback with seven carries for 177 yards and four touchdowns. He was also 6-for-10 passing with a TD.

"It was his first-ever game at quarterback with Kendel injured and he had a huge game," Obach noted.

Lucas Kmet also had a very good game on the ground with eight carries for 98 yards and a touchdown while Blake Good ripped off a 20-yard TD run.

Lee LaPierre had a five-yard TD run and a 10-yard TD catch.

Defensively, the Thunder were equally impressive with five interceptions.

Preston Vermette, Liam Palsson, Simon Desjarlais, Alex Luke and Erik Palsson each picked off a Parkwest pass. Palsson returned his interception for a touchdown.

With the victory, Interlake will now host the Moosomin Generals for the Murray Black Cup this Saturday at 2 p.m. in Stonewall.

Moosomin defeated the Virden Golden Bears 30-



EXPRESS PHOTO BY LANA MEIER

The Interlake Thunder defeated the Parkwest Outlaws 70-0 in a RMFL semifinal game last Sunday in Stonewall. Interlake will battle Moosomin for the Murray Black Cup this Saturday at 2 p.m. in Stonewall.

26 in their semifinal game last Saturday.

Interlake will have a tough test with Moosomin.

"They definitely throw the ball more than other teams we've seen this year and they play more of a spread offence so that will be a little bit of a different look," Obach said.

All three teams from Interlake's Prairieland Division lost their playoff game on Saturday. That had the Thunder a tad concerned heading into their semifinal clash with the Outlaws.

"I think part of the motivation that propelled us on Sunday was that the other three playoff games happened and they were all games where teams played against the other division and the teams from our

division all lost," Obach said. "Our guys (we're wondering), 'Are we in a weak division and, (if so), we better bring it.' (Parkland is) 0-6 but they might be a good 0-6 in a tough division."

Win or lose this weekend, the Thunder have had a very successful season, especially after starting 0-3.

"When you can play football in November, that's all that you can ask for and not a lot of teams get to finish a season with a win," Obach said. "We hope to be one of those teams. We started 0-3 and have won three of our last four and three straight at home. "Hopefully, we can keep it going for one more week."

Bisons hockey team raising funds for men's mental health

By Brian Bowman

The University of Manitoba Bisons men's hockey team is growing moustaches for a great cause this month.

Several players have stepped forward to participate in Movember to help raise money and awareness to support men's mental health.

"One of the leaders on our team (Liam Schioler) took the initiative and organized it all," said Bisons' forward Noah Basarab on Monday afternoon. "The team has been doing it for a couple of years now but this is my first year so I jumped on board with it. We're raising funds for men's mental health to show people it's OK to talk about issues and that."

Schioler, an assistant captain with the Bisons, had raised the most mon-

ey (\$420) by Monday afternoon. His goal is to raise \$1,000.

Gimli's Basarab, meanwhile, was third on the team at \$195. He joked that the team is having mixed results in terms of growing moustaches.

"Everyone is growing a stache but some are better than others," Basarab said, noting that he has had a moustache since he was 16 years old. "If they can't grow a stache, they're spreading the word."

On the ice, the Bisons are 1-5 heading into their two-game road trip to Regina to play the Cougars this Friday and Saturday.

Basarab, 22, has played three games so far in his first season with the University of Manitoba.

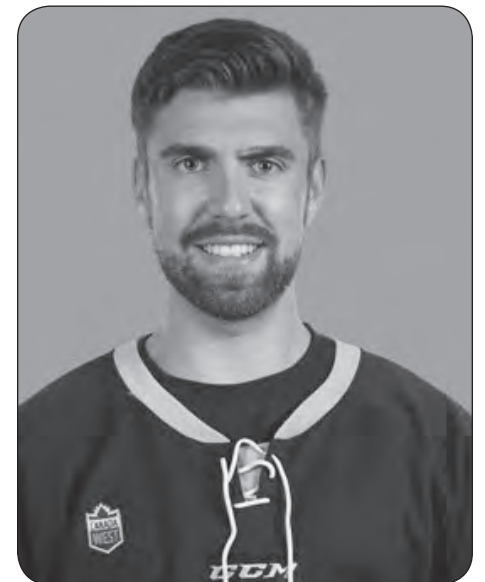
"It's really high level hockey," said

Basarab. "The first game that I got into, the pace was up there. There's no taking a shift off, you can't afford to take a shift off. It's 100 per cent all of the time."

Basarab said the Bisons' have been competitive in every game and had a chance to win. Manitoba has been on the losing end of three consecutive 4-3 scores already this season.

"It's just one lucky bounce going the other way," he said. "That's basically where we're at right now."

Anyone looking to donate money can visit ca.movember.com and put Manitoba Bisons in the search. They can also visit Noah Basarab's Twitter page.



Noah Basarab

sports & recreation

INSIDE > OUTSIDE > UPSIDE DOWN

U15 'AA' Lightning icing the competition

By Brian Bowman

The Interlake Lightning have had a great start to their U15 'AA' hockey season.

Interlake was a perfect 5-0 heading into this past Tuesday's road game against the Lord Selkirk/Seven Oaks Rebels Black.

"We're getting contributions from everyone, which is good," said Lightning head coach Cody King last week. "We have 17 kids and they're all showing up and giving their best effort and that's basically what it is. We don't have a bunch of superstars that are scoring us goals every game. It's been a real team effort."

The Lightning have been playing some great defensive hockey while getting very strong goaltending which has resulted in victories.

"(Our) goalies are giving us a chance to win every game," King said.

Interlake has had great success despite having only three returning

players at the U15 level.

"I've been with this team for the last three years and, at every practice, I bring out five APs," King explained. "So, all of the kids that AP'd for me last year made the team this year."

King has seen the players improve tremendously over the years.

Players on the team come from all over the Interlake and the program has had a lot of interest from kids. Forty kids came out this year for try-outs.

"The first year we had 17," King said, noting Foster Bytheway and Kristjon Finnson are helping coach the team.

The Lightning's last game was a solid 5-3 win over the St James Canadians on Oct. 31 in Stonewall.

Liam Butcher (two), Owen Shymko (two) and Justin Braid scored for the Lightning. Dylan Riddell, Braid and Noah Chartrand had assists in the game.

Liam Ivany earned the win in goal.



EXPRESS PHOTO BY MATTHIEU MEIER

The Interlake Lightning's Logan Meier is hounded by a River East Marauders' player during recent U15 AA action. Interlake was 5-0 heading into this week's action.

U18 Lightning topped by Thrashers twice

By Brian Bowman

The Interlake Lightning suffered a pair of one-goal losses to the Winnipeg Thrashers last weekend.

Carter Bear scored the game winner at 14:54 of the third period to lift Winnipeg to a 4-3 victory in Manitoba AAA U18 Hockey League action Saturday in Teulon.

The Thrashers' Daniel Tokariwski had tied the score at 3-3 at 10:28 of the final frame.

Winnipeg took a 2-0 lead with power-play goals from Hayden Chaloner and Tokariwski.

But Interlake's Evan Calder tallied midway in the second period and then Hayden Wheddon and Liam Cody, on the power play, tallied early in the third.

Wheddon and Calder each had two points in the game.

Lightning goaltender Zach Meadows stopped 37 Thrashers' shots.

On Friday, the Lightning lost 6-5 in overtime to the Thrashers in Winnipeg.

Tokariwski scored the game winner on the power play in OT. He earlier tallied a first-period goal.

Interlake's Alexander Kaczorowski had tied the score at 5-5 with a power-play goal at 7:34 of the third period. It was his second goal of the game.

The Lightning's other goals were scored by Wheddon, who had three

points in the game, Darian Sinclair, and Andrew Thevenot.

Chaloner (two), Bear and Xyon Kiemenehy also scored for Winnipeg.

Ty Hogue and Meadows split the goaltending duties for the Lightning.

Interlake, now 4-9-1, will host the Winnipeg Bruins on Wednesday (8 p.m.) in Teulon and then will head north to Thompson to play the Norman Northstars on Saturday (7:30 p.m.) and Sunday (1:30 p.m.).

Arborg Ice Dawgs defeat Lundar Falcons in CRJHL action

Staff

The Arborg Ice Dawgs defeated the Lundar Falcons 5-3 in Capital Region Junior Hockey League action on Sunday.

Josh Belcher led Arborg with a goal and two assists while Kalen Guimond and Dyson Pelletier each had a goal and an assist.

Troy Johanneson scored the Ice Dawgs' other goal. Arborg's Jack Ein-

arson had two assists in the game and leads the league in scoring with 16 points (six goals, 10 assists) in just seven games.

Ryan Gleich led Lundar with two goals while Dennis Baptiste also tallied.

Brandon Kowalchuk made 38 saves for the victory.

The Ice Dawgs played at the North Winnipeg Satellites on Tuesday but no

score was available.

Arborg will host the St. Malo Warriors on Thursday (8 p.m.) and then visit the league-leading Selkirk Fishermen Friday (7:30 p.m.).

Last Friday, Selkirk hammered the Falcons 8-2 in Lundar.

Reece Tessier had a fantastic game with four goals and an assist while Jordan Donald tallied twice and Matt Brooks had a goal and two assists.

Josh Poponick netted the Fishermen's other goal.

Cale Jonski had three assists in the game while Dominic Suhr chipped in with a pair of helpers.

Gleich and Riley Wirgau replied for Lundar.

Dillon Rapinchuk made 34 saves in the losing cause. Lundar will travel to St. Malo to take on the Warriors Saturday for a 7 p.m. game.

LeClair makes 47 saves in shutout win

By Brian Bowman

The Interlake Lightning snapped a three-game losing streak with a solid 1-0 victory over the Winnipeg Bruins in U17 AAA action last Friday in Warren.

Ian Buors scored the game winner in OT.

"It was a good game on a Friday night for us," said Lightning head coach Aaron Kaatz. "It was the first time that we had played them this year so we were curious to see what they would bring from the other side. We rose to the occasion and it was a great game."

Dylan LeClair was phenomenal in goal, making 47 saves for the well-deserved shutout.

"He's been absolutely stellar for us so far," Kaatz said. "The two wins that we have so far have both come from him. He's beaten the Wild and now has taken down the Bruins."

With the win, Interlake improved its record to 2-9. After an 0-5, the Lightning are 2-3 in their past five games.

"For me, it's a brand new group here and we have a lot of new guys that are new to the AAA league," Kaatz said. "We break our season into five-game chunks, so our first five games were dedicated to our learning phase. We tried to get back to the basics and try to play the right way. Our last couple of games and, especially with our wins, we had consistent efforts for the entirety of the game and we've done

the little things right out there and it has led to success for us."

Interlake will play the Bruins on Wednesday (6:30 p.m.) at Southdale West before hosting the Winnipeg Wild on Friday (7:30 p.m.) in Warren.

On Saturday, Interlake will battle the Eastman Selects in Ste. Anne. Game time is 6:30 p.m.

In U15 AAA action, the Lightning split a pair of games last weekend.

On Saturday, Interlake earned its first victory of the season with a solid 4-3 overtime win over the Pembina Valley Hawks in Morden.

Dainen Jacobson's second goal of the game was the game winner in OT.

Foxx Domansky and Mason Bernier also scored for the Lightning.

The Hawks' goals came from Noah Brigg, Alex Vasko and Jaxon Hildebrand.

Braedan Cormack made 38 saves for the win.

Sunday saw the Lightning get doubled 6-3 by the Winnipeg Thrashers Gold.

Quinn McKnight, Cole Swanson, and Talon Hogg scored for Interlake.

Winnipeg goals were tallied by Maddox Malmquist (two), Hubert Clarke, Crue Gard, Griffin Rarog and Sage Dela Cruz.

Interlake will host the Winnipeg Thrashers White on Wednesday (7 p.m.) in Stonewall and then will play the Central Plains Capitals on Sunday (5:15 p.m.) in Portage la Prairie.

take a break > GAMES

SUDOKU

	7	2						1
8			6					4
			2	8				6
	9			7	5			
4	6	3	9					5
								4
					1			
	4	5	8				3	
9	2							5

Fun By The Numbers

Like puzzles? Then you'll love sudoku. This mind-bending puzzle will have you hooked from the moment you square off, so sharpen your pencil and put your sudoku savvy to the test!

Level: Intermediate

Here's How It Works:

Sudoku puzzles are formatted as a 9x9 grid, broken down into nine 3x3 boxes. To solve a sudoku, the numbers 1 through 9 must fill each row, column and box. Each number can appear only once in each row, column and box. You can figure out the order in which the numbers will appear by using the numeric clues already provided in the boxes. The more numbers you name, the easier it gets to solve the puzzle!

8	9	9	3	4	7	1	2	9
6	9	3	2	6	8	9	7	4
1	6	9	1	4	2	7		
2	5	9	1	3	6	8	3	8
4	8	6	6	3	7	1	8	2
5	7	1	8	2	6	3	9	4
6	3	2	5	7	4	8	6	1
3	9	7	9	8	2	4	1	5
8	3	9	6	1	7	5	4	2
9	7	4	8	1	9			

Sudoku Answer

E	E	H	R	S	D	S	V	R	F
S	A	C	K	S	E	N	E	E	F
S	O	U	S	A	I	L	N	O	B
D	H	A	V	O	P	S	E	T	A
M	O	O	S	R	S	A	L	E	S
R	S	T	E	S	T	R	E	P	I
S	S	S	S	S	S	S	S	S	M
L	S	O	U	L	S	F	O	E	T
E	L	B	A	P	A	V	T	O	A
N	V	L	E	G	M	W	T	O	B
A	O	S	A	V	X	S	C	O	L
S	S	S	S	S	S	S	S	S	C

Crossword Answer

CROSSWORD

CLUES ACROSS

- Taxis
- Mega energy unit (abbr.)
- Single-strand break
- Combinations of countries
- Cutting tool
- Small bay in Gulf of Maine
- Actress Lathan
- Chatter incessantly
- Energy, style and enthusiasm
- Simple shoe
- Woman (French)
- Abnormal rattling sound
- Able to change
- Future butterfly
- Used in cooking and medicine
- A street for nightmares
- French modernist painter
- Dishonors
- Integrated data processing
- Frameworks
- Apply new materials
- Where merch is displayed
- American figure skater Lipinski
- Cycles per second
- Oohed and ___
- Dark olive black
- Peyton's little brother
- Plant in the bean family
- A wife: ___ covert
- Born of
- Arranges balls on the pool table
- Title of Italian monk
- Tooth caregiver
- American feminist poet

CLUES DOWN

- Dan Rather's old network
- Expression of sorrow or pity
- ___ fide (Latin)
- Sign of healing
- Warm-blooded vertebrate

1	2	3	4		5	6	7		8	9	10			
11				12		13			14					
15						16			17					
	18				19		20			21				
				22	23				24					
25	26	27	28	29										
30							31							
32									33	34	35	36	37	
					38	39	40		41	42				
						43			44					
	45	46	47											
48					49					50	51	52	53	54
55						56					57			58
59											61			
62							63						64	

- Model
- Of or relating to plants
- Plant of the heath family
- Where to weigh something
- Internal structure
- ___ Paulo, city
- South Slavic person
- A way to record
- Have already done
- As much as one can hold
- Auburn legend Newton
- Comedienne Gasteyer
- Beloved dog Rin Tin ___
- Midway between east and southeast
- Call it a career
- Former CIA
- American time
- Confederate general
- Soviet Socialist Republic
- Travel downward
- Made red-blue
- Vietnamese revolutionary Le Duc
- Capital of Italy
- Small bunches of flowers
- Calvary sword
- A distinctive, pleasant odor
- A well-defined track or path
- Cereal used to make flour
- Retrospective analysis (abbr.)
- Grayish white
- Engrave
- Famed men's basketball program
- Midway between south and southeast

Classifieds



Book Your Classified Ad Today - Call 467-5836 or Email classifieds@expressweeklynews.ca

SCRAP METAL

Buyer for all farmyard scrap, machinery and autos. NO ITEM TOO LARGE! Best prices paid, cash in hand. Phone Alf at 204-461-1649.

BUYING SCRAP METAL, CARS, TRACTORS, COMBINES, FARM SCRAP, ANY METAL MATERIAL, ANY FARM MACHINERY. PH LONNIE AT 204-886-3407 LVE. MESSAGE OR CELL AT 204-861-2031.

REAL ESTATE

ATTENTION INVESTORS - 36.36 acres in Town of Beausejour. Ready for development, adjacent to school/pool/recreation facilities. Call Len 204-268-9500 Wilke & Company RES.

EXPRESS
WEEKLY NEWS
204-467-5836

PROPERTY MANAGEMENT

Do you own rental property in Winnipeg? Are you tired of dealing with long term renters and the mess they can leave? We can provide you with a different option to earn a rental income. Pawluk Realty 204-890-8141.

APARTMENT FOR RENT

Tollak Place has 1 & 2 bedroom suites, located at 40 Eveline Street. Spacious suites, with F/S, A/C, storage areas and large balconies; utilities are included, parking is extra. Tollak 2 is a 55 plus bldg., river view apts. with central air, F/S, DW & microwave; large storage area off the kitchen and a balcony; utilities and parking extra. Call the onsite office 204-482-2751 for AVAILABILITY.

MISCELLANEOUS

4 - Michelin snow tires 215/65R16's plus a wall mount tire rack for \$250. Phone or text 204-389-5945.

Firearms wanted. Looking for all unwanted firearms. Fully licensed for both non-restricted and restricted. Anywhere from individual items to estates. Please call Adam at 204-795-2850.

HELP WANTED

The Riverton Daycare is looking for a part time/casual child care worker to care for children of all ages in our infant/preschool center and our school age center. Days/hours are flexible. Our operating hours are Monday to Friday from 7 a.m. to 6 p.m. Duties will include supervision of children, assisting with crafts and activities, dressing children for outdoor play, light kitchen duties, clean up, and assisting senior staff. Applicants must be 18+ years old. Selected applicant will be provided with CPR, criminal record check and child abuse registry through the daycare. Please send resumes to Box 189 Riverton, MB. ROC 2R0 or email to rdci@mymts.net. Selected candidates will be called for an interview. For more info please call the center at 204-378-2871 and ask for Cynthia or Shara.

FIREWOOD

Poplar, maple, pine & ash for sale. Can be cut, split & delivered. Ph 204-861-0487.

MISCELLANEOUS

Surefire 101CE wood/electric furnace, 28" fire box. In very good condition, recently inspected. Ph 204-376-2495.

NOTICES

URGENT PRESS RELEASES - Have a newsworthy item to announce? Having a fall or winter event? An exciting change in operations? Though we cannot guarantee publication, MCNA will get the information into the right hands for ONLY \$35 + GST/HST. Call MCNA 204-947-1691 for more information. See www.mcna.com under the "Types of Advertising" tab for more details.

Everything you need to promote your business
Call Today! 467-5836



Please support our advertisers
SHOP LOCAL

HONOUR YOUR LOVED ONES
WITH AN
ANNOUNCEMENT IN THE EXPRESS



Rural Municipality of Armstrong

NOTICE OF PUBLIC AUCTION SALE OF LANDS FOR ARREARS OF TAXES RURAL MUNICIPALITY OF ARMSTRONG

Pursuant to subsection 367(7) of The Municipal Act, notice is hereby given that unless the tax arrears for the designated year and costs in respect of the hereinafter described properties are paid in full to the Municipality prior to the commencement of the auction, the Municipality will on the 2nd day of **December, 2021**, at the hour of **2:00 PM**, at Rural Municipality of Armstrong, 55 - Highway #17, Inwood, Manitoba, proceed to sell by public auction the following described properties:

Roll Number	Description	Assessed Value	Amount of Arrears & Costs for Which Property May be Offered for Sale
82900	PARCEL 1: THE W 1/2 OF LOT 5 PLAN 3142 WLTO EXC OUT OF SAID LOT 5: ALL MINES MINERALS AND MINERAL OILS AS SET FORTH IN TRANSFER 706717 WLTO PARCEL 2: ALL THAT PORTION OF THE SW 1/4 OF SAID SECTION 23 BOUNDED AS FOLLOWS: ON THE EAST BY THE WESTERN LIMIT OF SAID LOT 5 ON THE NORTH AND SOUTH BY THE STRAIGHT PRODUCTIONS WLY OF THE NORTHERN AND SOUTHERN LIMITS OF SAID LOT 5 AND ON THE WEST BY THE EASTERN LIMIT OF FIRST AVENUE WEST AS SHOWN ON SAID PLAN 3142 WLTO - 10067 PR231. PLANS	L - \$9,100 B - \$94,700	\$5,121.00
227000	THE SLY 105 FEET OF THE NLY 212 FEET OF LOT 18 PLAN 4892 WLTO EXC THEREOUT ALL MINES AND MINERALS AS SET FORTH IN THE ORIGINAL GRANT FROM THE CROWN IN SW 1/4 2-18-1 WPM - 10 2ND AVE, PLANS	L - \$5,600	\$1,793.66
314800	SE 1/4 OF SECTION 30-21-1 WPM, EXC FIRSTLY: RIGHT OF WAY OF CANADIAN NORTHERN RAILWAY, PLAN 431 WLTO (P DIV), AND SECONDLY: ALL MINES AND MINERALS AND SPECIAL RESERVATIONS AS RESERVED IN THE GRANT FROM THE CROWN. - DESC SE 30-21-1 W	L - \$43,500	\$4,057.40
314900	SW 1/4 OF SECTION 30-21-1 WPM, EXC FIRSTLY: RIGHT OF WAY OF THE CANADIAN NORTHERN RAILWAY, PLAN 2363 WLTO, AND SECONDLY: ALL MINES AND MINERALS AS SET FORTH IN THE ORIGINAL GRANT FROM THE CROWN. - 5045 ROAD 124 NW	L - \$71,200 B - \$177,500	\$12,292.02
331200	FIRSTLY: NE 1/4 OF SECTION 24-21-2 WPM, EXC ROAD, PLAN 524 WLTO (P DIV) SUBJECT TO THE RESERVATIONS AND PROVISIONS CONTAINED IN THE GRANT FROM THE CROWN. - DESC NE 24-21-2 W	L - \$38,700	\$3,925.62
331300	SECONDLY: NW 1/4 OF SECTION 24-21-2 WPM, SAID SECONDLY, BEING SUBJECT TO THE RESERVATIONS AND PROVISIONS CONTAINED IN THE GRANT FROM THE CROWN. - NW 24-21-2 W	L - \$31,300	\$3,791.09

The tax sale is subject to the following terms and conditions with respect to each property:

- The purchaser of the property will be responsible for any property taxes not yet due.
- The Municipality may exercise its right to set a reserve bid in the amount of the arrears and costs.
- If the purchaser intends to bid by proxy, a letter of authorization form must be presented prior to the start of the auction.
- The Municipality makes no representations or warranties whatsoever concerning the properties being sold.
- The successful purchaser must, at the time of the sale, make payment in **cash, certified cheque or bank draft** to the Rural Municipality of Armstrong as follows:
 - The full purchase price if it is \$10,000 or less; OR
 - If the purchase price is greater than \$10,000, the purchaser must provide a non-refundable deposit in the amount of \$10,000 and the balance of the purchase price must be paid within 20 days of the sale; AND
 - A fee in the amount \$309.75 (\$295 plus GST) for preparation of the transfer of title documents. The purchaser will be responsible for registering the transfer of title documents in the land titles office, including the registration costs.
- The risk for the property lies with the purchaser immediately following the auction.
- The purchaser is responsible for obtaining vacant possession.
- If the property is non-residential property, the purchaser must pay GST to the Municipality or, if a GST registrant, provide a GST Declaration.

Dated this 4th day of November, 2021.

Managed by:



Corlie Larsen
Chief Administrative Officer
Rural Municipality of Armstrong
Phone: (204) 278-3377
Fax: (204) 278-3437

NOTICE OF PUBLIC AUCTION SALE OF LANDS FOR ARREARS OF TAXES RURAL MUNICIPALITY OF GIMLI



Pursuant to subsection 367(7) of The Municipal Act, notice is hereby given that unless the tax arrears for the designated year and costs in respect of the hereinafter described properties are paid in full to the Municipality prior to the commencement of the auction, the Municipality will on the 2nd day of **December, 2021**, at the hour of **10:00 AM**, at Rural Municipality of Gimli, 62 - 2nd Avenue, Gimli, MB, proceed to sell by public auction the following described properties:

Roll Number	Description	Assessed Value	Amount of Arrears & Costs for Which Property May be Offered for Sale
13010	LOT 9 PLAN 47546 WLTO IN SE 1/4 OF 4-18-4 EPM - 30 REYNOLDS RD	L - \$42,600	\$7,474.22
104669	UNIT 60 CONDOMINIUM PLAN 72 WLTO TOGETHER WITH AN UNDIVIDED 1.2048 % INTEREST IN THE COMMON ELEMENTS AS APPURTENANT THERETO SUBJECT TO ALL ENTRIES SET OUT ON THE TITLE OF WINNIPEG CONDOMINIUM CORPORATION NO. 72 - 13 TERN DR	L - \$66,700 B - \$393,000	\$39,986.59
129500	LOT 15 BLOCK 4 PLAN 5945 WLTO IN FRAC NW 1/4 9-19-4 EPM - 80 SOUTH COLONIZATION RD	L - \$37,600 B - \$109,300	\$10,248.88
178000	LOT 24 PLAN 3118 WLTO IN S 1/2 21-19-4 EPM - 7 NORTH 8TH AVE, LONI BEACH	L - \$26,200 B - \$116,500	\$24,813.26
188608.002	LOT 2 PLAN 44850 WLTO IN SE 1/4 OF 13-19-3 EPM IN W 1/2 OF 18-19-4 EPM AND IN GOVERNMENT ROAD ALLOWANCE (CLOSED). - 279 ANSON ST	L - \$9,000 B - \$727,600	\$64,672.11
188608.007	LOTS 7 AND 8 PLAN 44850 WLTO IN W 1/2 18-19-4 EPM AND SE 1/4 13-19-3 EPM AND CLOSED GOVERNMENT ROAD ALLOWANCE - 311 ANSON ST	L - \$13,900 B - \$729,100	\$97,797.24
188678	LOT 1 BLOCK 9 PLAN 23733 WLTO IN E 1/2 13-19-3 EPM AND W 1/2 18-19-4 EPM AND IN PART CLOSED GOVERNMENT ROAD ALLOWANCE, PARCEL 'C' PLAN 23108 WLTO IN EAST HALVES 12 AND 13-19-3 EPM AND IN WEST HALVES 7 AND 18-19-4 EPM AND IN PART CLOSED GOVERNMENT ALLOWANCE. - 180 COOK AVE	L - \$188,100 B - \$208,300	\$29,656.92

The tax sale is subject to the following terms and conditions with respect to each property:

- The purchaser of the property will be responsible for any property taxes not yet due.
- The Municipality may exercise its right to set a reserve bid in the amount of the arrears and costs.
- If the purchaser intends to bid by proxy, a letter of authorization form must be presented prior to the start of the auction.
- The Municipality makes no representations or warranties whatsoever concerning the properties being sold.
- The successful purchaser must, at the time of the sale, make payment in **cash, certified cheque or bank draft** to the Rural Municipality of Gimli as follows:
 - The full purchase price if it is \$10,000 or less; OR
 - If the purchase price is greater than \$10,000, the purchaser must provide a non-refundable deposit in the amount of \$10,000 and the balance of the purchase price must be paid within 20 days of the sale; AND
 - A fee in the amount \$309.75 (\$295 plus GST) for preparation of the transfer of title documents. The purchaser will be responsible for registering the transfer of title documents in the land titles office, including the registration costs.
- The risk for the property lies with the purchaser immediately following the auction.
- The purchaser is responsible for obtaining vacant possession.
- If the property is non-residential property, the purchaser must pay GST to the Municipality or, if a GST registrant, provide a GST Declaration.

Dated this 4th day of November, 2021.

Managed by:



Cindy Makowsky
Tax/Revenue Clerk
Rural Municipality of Gimli
Phone: (204) 642-6666
Fax: (204) 642-6660

204 PALLET AND PACKAGING

Like working with wood and working close to home?

204 Pallet & Packaging in Stony Mountain is looking for full time production workers. Wage depending on experience, and health benefits after 3 months. Please call 204-344-5404 for more details.

Eddie's Gravel Supply Ltd. is hiring

CLASS 1 DRIVERS

Competitive Wages, Training Health Benefits
info@eddiesgravel.com
204-389-2023
102086 PTH9, Wpg Beach, MB

Eddie's Gravel Supply Ltd. is hiring

Journeyman Mechanic & Shop Foreman

Competitive Wages, Training Health Benefits
info@eddiesgravel.com
204-389-2023
102086 PTH9, Wpg Beach, MB

Classifieds Announcements



Book Your Classified Ad Today - Call 467-5836
or Email classifieds@expressweeklynews.ca

NOTICES

On-line meeting or event coming up? ADVERTISE NOW, AND MAKE THE MOST OF THINGS! Get your information out to a broad audience. GET SEEN in the 37 Manitoba Weekly Newspapers and over 352,000 + HOMES, for as little as \$189 + GST! To learn more, Call us at 204-467-5836 or call MCNA at 204-947-1691 for details or to book ads. MCNA - Manitoba Community Newspapers Association. www.mcna.com

HEALTH

Are you suffering from joint or arthritic pain? If so, you owe it to yourself to try elk velvet antler capsules. Hundreds have found relief. Benefits humans and pets. EVA is composed of proteins, amino acids, minerals, lipids and water. Key compounds that work to stimulate red blood cell production & cartilage cell regeneration & development. Stonewood Elk Ranch Ltd., 204-467-8884 or e-mail stonewoodelkranch@mymts.net

EMPLOYMENT OPPORTUNITY

Lakeshore Women's Resource Centre
@ #9 Main Street in Ashern
is accepting applications for

Executive Director /Counsellor

Full-time position
start date: January 4th/2022.

Submit letter of application and resume to Hiring Committee, complete with 3 references & their contact info to Indentgal@gmail.com
Application deadline: November 26th/2021.
For more information, contact Hiring Committee at above email address.

We thank all those who apply, but only those considered for an interview will be contacted.

FULL TIME CAREER OPPORTUNITY Gimli Seniors Resource Council Inc. MANAGER

We are looking for a people oriented, organized, innovative manager, who will be responsible for the overall supervision of staff and of support services programs. Programs include Congregate Meal Program, Lifeline, Meals on Wheels, Transportation Service, and others.

Reporting to the board of directors, the requirements for the position include good supervisory, administrative, creativity and problem solving, written communication, and interpersonal skills, as well as a commitment to seniors' health and well-being and community.

University or college credentials, plus related experience, or some equivalent combination are required, as are a car, valid driver's license, and pre-employment checks.

The hours are Monday to Friday 8am to 4pm, with some potential evenings or weekends.

We offer a competitive starting wage which includes pension and benefit package.

**Deadline for applications:
Monday, November 15th.**

Please submit a resume including 3 references to: pwiscomb@mymts.net
Or Gimli Seniors Resource Council Inc.,
Box 1928 Gimli, Mb. ROC 1B0
c/o P. Wiscombe



Rural Municipality of Armstrong

REQUEST FOR PROPOSALS

The RM of Armstrong is Requesting Proposals From Professional Auditing Organizations To Preform The Annual Audit of the Financial Statements Of The RM of Armstrong Commencing With the Year Ending December 31, 2021. The Term Of The Engagement Of Services Will Be For Three (3) Years With Audits Preformed For Each Fiscal Year Ending December 31, 2021 to 2023 inclusively.

The lowest or any proposal may not necessarily be accepted.

Closing Date: Thursday December 9, 2021 4:30 PM.

Corlie Larsen, CAO
RM of Armstrong
Lot 55 Highway 17
Box 69, Inwood, MB ROC 1PO
Phone: 204-278-3377
Email: cao@rmofarmstrong.com



Rural Municipality of Armstrong

INVITATION FOR PROPOSALS

FOR THE OPERATION, MAINTENANCE AND MANAGEMENT OF LANDFILL SITE AND WASTE TRANSFER STATIONS

The Rural Municipality of Armstrong invites tenders for the operation, maintenance and management of the Meleb Waste Disposal Grounds, the Inwood Transfer Station and the Chatfield Transfer Station.

Scope of work would include, but not limited to:

- recording relevant load descriptions
- screening for refuse permits
- screening customer loads for prohibited materials
- directing customers to appropriate drop off locations
- provide and manage employees
- organize, manage and arrange recycling for pickups
- regular removal of any accumulated wind-blown litter around and within the sites
- responsible for pushing/compacting of waste in the cell as needed and monthly clay covering of waste, using own equipment
- arrange hauling of bin waste and recyclables with municipal contractor
- maintain and operate the sites in accordance with the operating permits

Please contact the office at the address or phone number below, for more information.

Proposal suggestions for cost effectiveness and efficiency are encouraged.

Proposals are to be submitted to the RM of Armstrong marked "Waste Management Proposal" by Friday, December 3, 2021 before 4:00 PM.

Lowest or any quote not necessarily accepted.

Corlie Larsen, CAO
RM of Armstrong
Lot 55 Highway 17
Box 69, Inwood, MB ROC 1PO
Phone: 204-278-3377



EVERGREEN SCHOOL DIVISION
is searching for
Divisional Substitute Teachers
on temporary contracts,
effective ASAP to March 25, 2022.

Divisional Substitute Teachers will be assigned to all schools in the division and will provide support as needed. Evergreen schools are located in Arborg, Gimli, Riverton and Winnipeg Beach. Pay is as per the Collective Agreement.

See website for details and application procedures:
<http://www.esd.ca/Employment under Professional Staff>.

CLOSING DATE: November 16, 2021 (3:30 p.m.)



MUNICIPALITY OF BIFROST-RIVERTON PUBLIC NOTICE

Pursuant to Section 194 of *The Municipal Act*, public notice is hereby given that the auditor's financial report, together with related financial statements for the 2020 fiscal year, is available for inspection. This information can be retrieved at the office of the Municipality of Bifrost-Riverton in Arborg, Manitoba during office hours or online at BifrostRiverton.ca

Dated at Arborg, Manitoba this 10th day of November, 2021.

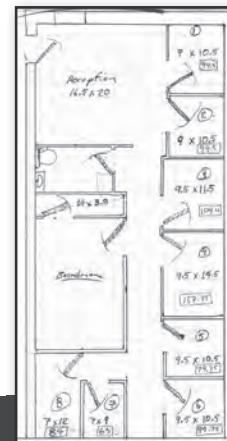
Mr. Jordan Willner, CMMA
Chief Administrative Officer
Municipality of Bifrost-Riverton

CLANDEBOYE AVE in Selkirk Executive Mall OFFICE SPACE FOR LEASE



Property Features

Total square Footage 1700, includes eight offices of various sizes, a board room and a front reception area. Current tenants include Sun Life Financial, a Massage Therapist, an Esthetician, Glow Fitness for Women and the Selkirk Record. The building was upgraded in 2012. Both the reception and board room are shared, there are currently two offices available for lease.



For information please contact:

BIG Real Estate
204-485-0010

email bigandcolourful@mts.net

Classifieds



Book Your Classified Ad Today - Call 467-5836 or Email classifieds@expressweeklynews.ca



These are lonely times – Red Cross can help.

Sign up for weekly chats with the Friendly Calls program!

Call: 1-204-583-6285

Email: friendlycallingmb@redcross.ca

McSherry Auctions
12 Patterson Dr.,
Stonewall, MB

Online Timed Auctions
@ iCollector.com

Estate & Moving
Closes Wed Nov 17 @ 7:00 PM

Estate & Moving
Closes Wed Nov 24 @ 7:00 PM

Consignments Welcome!
(204) 467-1858 or
(204) 886-7027
www.mcsherryauction.com



Power Builder Advertising WORKS!

- GET SEEN by over 340,000 Manitoba Homes!
- Use your LOGO!
- Create instant top of mind awareness
- Showcase your info, business, product, job, announcements or event
- We format it, to make it look great!
- Starting at \$339.00 (includes 45 lines of space)
- The ads blanket the province and run in MCNA's 37 Manitoba community newspapers
- Very cost effective means of getting your message out to the widest possible audience

Contact this newspaper NOW or MCNA at 204.947.1691 or email classified@mcna.com
www.mcna.com



HOME OF THE FEHR DEAL!

SUPPLYING DÉCOR CABINETS FOR 25+ YRS

PROMPT SERVICE & FREE DESIGN USUALLY WITHIN 24 HRS

Ph: (204) 746-2223

FEHRSCABINETS.COM
office@fehrcabinets.com



Sweet Christmas Wishes

Unveiled at Lady of the Lake in Brandon.

A showcase of wonder and joy and great lunch!

Shop Online Save \$10

Use code SAVE1021

ladyofthelake.ca

(204)725-4181

Brandon, MB



Winter Road Haul 2022

Class 1 Drivers needed for deliveries in MB & NW Ont.

(800) 665-4302 ext. 251

or email: orderdesk@penneroil.ca



Educational Webinar

November 20 10:30 AM (Zoom)

Scleroderma Can Be Hard To Swallow

Register: sclerodermamanitoba.com

204-256-0225

2022 Support Group dates: January 22 April 23

BATTERIES FOR EVERYTHING!

50,000 BATTERIES IN STOCK

- *Auto *Farm *Marine
- *Construction *ATV
- *Motorcycle *Golf Carts
- *Rechargeables *Tools
- *Phones *Computers
- *Solar Systems & design
- * Everything Else!

THE BATTERY MAN

1390 St. James St., WPG

1-877-775-8271
www.batteryman.ca

DEKALB SuperSpiel

Welcomes the World

Dec 3 – 6, 2021
Morris Curling Club

www.dekalbsuperspiel.com

Come celebrate 14 "Super" years of DEKALB Curling

Trucks, Trailers, Truckbeds & Tires

- Full Repair & Safeties
- Vehicle Parts, Tires & Wheels
- Trailer Parts & Batteries
- Sales, Financing, Leasing & Rentals

EBY Aluminum:

- Gooseneck and Bumper Pull Cattle & Equipment Trailers
- Truck & Service Bodies
- Generation Grain Trailers

KALDECK TRUCK & TRAILER INC.

Hwy #1, MacGregor, MB
1-888-685-3127
www.kaldecktrailers.com



Westshore COMMUNITY FOUNDATION INC

Administrative Coordinator (Part-Time, Year-Round)

The Westshore Community Foundation, a charitable organization serving not-for-profit groups in the Gimli, Riverton, Fraserwood, Winnipeg Beach and Dunnotar areas, is seeking a motivated person to fill the role of **Administrative Coordinator**. The Administrative Coordinator will be responsible for the day-to-day operation of the Westshore office, located in Gimli, and will report directly to the Westshore Board of Directors.

Responsibilities:

- Office-related duties, including responding to telephone or email inquiries, updating and maintaining office manuals and file systems, maintaining financial records, preparing monthly and annual financial reports, and maintaining website and social media accounts;
- Donor-related duties, including creating and maintaining updated contact listings, preparing and distributing information to donors, grant/scholarship applicants and other stakeholders
- Volunteer-related duties, including maintaining contact with volunteers, recruiting new volunteers and coordinating volunteers for events; and
- Board-related duties, including preparing Agendas and recording Minutes at Board meetings, assisting with event planning and execution, and general administrative support.

Qualifications and Experience:

- Proficiency with Microsoft programs, including Word, Excel and Outlook.
- Experience with setting up and maintaining filing systems.
- Ability to create and interpret financial statements and proficiency with accounting software.
- Experience coordinating volunteers and/or working in a Board-setting.
- The Administrative Coordinator will display effective written and verbal communication skills, strong interpersonal skills, including the ability to work effectively with the Board and with the public, and strong organizational skills, including the ability to prioritize tasks. The Administrative Coordinator will be able to work independently and will responsibly self-manage.

As a Foundation committed to equity and accessibility, we encourage members of equity-seeking communities, including racialized minorities and Indigenous persons, persons with disabilities, and persons of all sexual orientations and gender identities/expressions, to apply. We welcome you to inform us confidentially if you require any special accommodations in order to participate fully in our hiring process.

To apply, please forward your Resume to westshorefdn@hotmail.ca by no later than November 19, 2021. All applications are appreciated, however, only those selected for further consideration will be contacted.



NOTICE OF PUBLIC AUCTION
SALE OF LANDS FOR ARREARS OF TAXES
TOWN OF TEULON

Pursuant to subsection 367(7) of The Municipal Act, notice is hereby given that unless the tax arrears for the designated year and costs in respect of the hereinafter described properties are paid in full to the Municipality prior to the commencement of the auction, the Municipality will on the 10th day of December, 2021, at the hour of 2:00 PM, at Town of Teulon, 44 - 4th Avenue SE, Teulon, Manitoba, proceed to sell by public auction the following described properties:

Roll Number	Description	Assessed Value	Amount of Arrears & Costs for Which Property May be Offered for Sale
23200	LOT 12 BLOCK 3 PLAN 1219 WLTO IN NW 1/4 21 AND S 1/2 28-16-2 EPM - 46 SECOND ST SW, TOWN OF TEULON	L - \$18,400 B - \$60,900	\$7,567.47

The tax sale is subject to the following terms and conditions with respect to each property:

- The purchaser of the property will be responsible for any property taxes not yet due.
- The Municipality may exercise its right to set a reserve bid in the amount of the arrears and costs.
- If the purchaser intends to bid by proxy, a letter of authorization form must be presented prior to the start of the auction.
- The Municipality makes no representations or warranties whatsoever concerning the properties being sold.
- The successful purchaser must, at the time of the sale, make payment in cash, certified cheque or bank draft to the Town of Teulon as follows:
 - i) The full purchase price if it is \$10,000 or less; OR
 - ii) If the purchase price is greater than \$10,000, the purchaser must provide a non-refundable deposit in the amount of \$10,000 and the balance of the purchase price must be paid within 20 days of the sale; AND
 - iii) A fee in the amount \$309.75 (\$295 plus GST) for preparation of the transfer of title documents. The purchaser will be responsible for registering the transfer of title documents in the land titles office, including the registration costs.
- The risk for the property lies with the purchaser immediately following the auction.
- The purchaser is responsible for obtaining vacant possession.
- If the property is non-residential property, the purchaser must pay GST to the Municipality or, if a GST registrant, provide a GST Declaration.

Dated this 22nd day of October, 2021.

Managed by:



Andrew Glassco
Chief Administrative Officer
Town of Teulon
Phone: (204) 886-2314
Fax: (204) 886-3918



NOTICE OF PUBLIC AUCTION
SALE OF LANDS FOR ARREARS OF TAXES
RURAL MUNICIPALITY OF GRAHAMDALE

Pursuant to subsection 367(7) of The Municipal Act, notice is hereby given that unless the tax arrears for the designated year and costs in respect of the hereinafter described properties are paid in full to the Municipality prior to the commencement of the auction, the Municipality will on the 9th day of December, 2021, at the hour of 10:00 AM, at Rural Municipality of Grahamdale, 23 Government Road, Moosehorn, Manitoba, proceed to sell by public auction the following described properties:

Roll Number	Description	Assessed Value	Amount of Arrears & Costs for Which Property May be Offered for Sale
483205	PARCEL ONE: ALL THAT PORTION OF THE E OF SECTION 30-24-6 WPM TAKEN FOR THE RIGHT-OF-WAY OF THE CANADIAN NORTHERN RAILWAY PLAN 398 WLTO (P. DIV.) EXC: ALL MINES AND MINERALS AS SET FORTH IN THE ORIGINAL GRANT FROM THE CROWN PARCEL TWO: ALL THAT PORTIONS OF THE W AND THE SE OF SECTION 20-24-6 WPM TAKEN FOR THE RIGHT-OF-WAY OF THE CANADIAN NORTHERN RAILWAY PLAN 398 WLTO (P. DIV.) EXC: ALL MINES AND MINERALS AS SET FORTH IN THE ORIGINAL GRANT FROM THE CROWN PARCEL THREE: ALL THAT PORTION OF THE NE OF SECTION 8-24-6 WPM LYING NE OF A LINE DRAWN PARALLEL TO AND 148.5 PERPENDICULARLY DISTANT SWLY FROM THE CENTRE LINE OF THE RIGHT-OF-WAY OF THE CANADIAN NORTHERN RAILWAY COMPANY PLAN 398 WLTO (P. DIV.) EXC: ALL THAT PORTION TAKEN FOR A ROAD DIVERSION AND SHOWN COLOURED BROWN ON SAID PLAN 398 WLTO (P. DIV.) EXC: ALL MINES AND MINERALS AS SET FORTH IN DEED 79100 PARCEL FOUR: ALL THAT PORTION OF THE NE OF SECTION 17-24-6 WPM TAKEN FOR THE RIGHT-OF-WAY OF THE CANADIAN NORTHERN RAILWAY PLAN 398 WLTO (P. DIV.) EXC: ALL MINES AND MINERALS AS SET FORTH IN THE ORIGINAL GRANT FROM THE CROWN PARCEL FIVE: ALL THAT PORTION OF THE SW OF SECTION 29-24-6 WPM TAKEN FOR THE RIGHT-OF-WAY OF THE CANADIAN NORTHERN RAILWAY PLAN 398 WLTO (P. DIV.) EXC: ALL MINES AND MINERALS AS SET FORTH IN THE ORIGINAL GRANT FROM THE CROWN - PLAN 398	L - \$11,400	\$2,959.44

The tax sale is subject to the following terms and conditions with respect to each property:

- The purchaser of the property will be responsible for any property taxes not yet due.
- The Municipality may exercise its right to set a reserve bid in the amount of the arrears and costs.
- If the purchaser intends to bid by proxy, a letter of authorization form must be presented prior to the start of the auction.
- The Municipality makes no representations or warranties whatsoever concerning the properties being sold.
- The successful purchaser must, at the time of the sale, make payment in cash, certified cheque or bank draft to the Rural Municipality of Grahamdale as follows:
 - i) The full purchase price if it is \$10,000 or less; OR
 - ii) If the purchase price is greater than \$10,000, the purchaser must provide a non-refundable deposit in the amount of \$10,000 and the balance of the purchase price must be paid within 20 days of the sale; AND
 - iii) A fee in the amount \$309.75 (\$295 plus GST) for preparation of the transfer of title documents. The purchaser will be responsible for registering the transfer of title documents in the land titles office, including the registration costs.
- The risk for the property lies with the purchaser immediately following the auction.
- The purchaser is responsible for obtaining vacant possession.
- If the property is non-residential property, the purchaser must pay GST to the Municipality or, if a GST registrant, provide a GST Declaration.

Dated this 21st day of October, 2021.

Managed by:



Shelly Schwitek
Chief Administrative Officer
Rural Municipality of Grahamdale
Phone: (204) 768-2858
Fax: (204) 768-3374

The Express Weekly News Classified booking deadline is Monday at 4 p.m. prior to Thursday's publication Please Call 204-467-5836

Announcements

Book Your Classified Ad Today -
Call 467-5836 or Email
classifieds@expressweeklynews.ca



What's *Your* story?

We want to hear from you.

The Express Weekly News connects people through stories to build stronger communities. Do you know someone who has a unique hobby? Will be recognized by a local organization for volunteer service? A teacher that goes above and beyond? A hometown hero?

A sports star? A business celebrating a milestone or expansion?

A senior celebrating their 100th birthday?

A young entrepreneur starting out?

Please share your story ideas at news@expressweeklynews.ca or Phone 204-467-5836



IN MEMORIAM



In Loving Memory of my Mom
Helen (Chuba) Lysack

November 14, 1982

So many years have passed
So many tears I shed
For my dear Mom and my friend
Never forgotten, close in my heart
You will always be
Smiling down from heaven,
My guardian angel.
Until we meet again.

-Missed and loved every day,
your daughter Cathy
and Teri

OBITUARY

Philip Neil Bauernhuber
1956-2021



It is with profound sadness we announce the passing of Philip Neil Bauernhuber after a short battle with cancer. On Saturday, October 30th Philip passed with his family by his side at the Johnson Memorial Hospital in Gimli. Philip was a beloved father, grandfather, son, brother and loving husband of Susan Bauernhuber.

Philip is survived by his loving wife Susan; his three stepchildren Lark (David), Tanis (Monty), Cory (Candace); his grandchildren Chac, Sandino, Caleb, Kolby, Hailey, Raya and Wyatt; his parents Joseph and Vigdis Bauernhuber; his brother Bruce Bauernhuber; Uncle Karl (Kristine) Bauernhuber; his Aunts Frances Sigurdson, Borga Jakobson and their families as well as his loving dog Tanner.

He is now at peace with his sister Ingrid Bauernhuber; Uncle Oli Sigurdson (Bennie) and his Uncles Sveinn Sigurdson, Bjarki Jakobson as well as cousin Gestur Jakobson.

Phil was born and raised in Geyser on the family farm. He worked at Arborg/Noventis Credit Union for 40 years and made many friends during this time. Phil loved working in the yard and on the garden. You could also find him on the golf course in the summer or in the curling rinks during the winter months.

Phil was very passionate about his community and volunteered on many committees. He was very proud of his family and was considered their rock to lean on. He treasured his friendships and was always there if anyone needed him.

Donations can be made in his memory to a charity of your choice

The family would like to thank the paramedics, nursing staff and doctors for his care.

Cremation has taken place and a Celebration of Life will be held at a later date.



204-949-2200
Gimli 204-642-7124
neilbardalinc.com

OBITUARY

Maria Torfhildur Frantz (nee Isfeld)
December 16, 1930 -
November 3, 2021



Sadly, we announce the passing of Maria at the Heritage Village Nursing Home in Chilliwack, B.C.

Maria was born in Gimli to John and Fanny Isfeld, after completing school in Gimli Maria went to work for Investor Syndicate then with IBM in Winnipeg. At the New Year's Eve dance in 1950 she met Vern Frantz who was with the Air Force in Gimli. They married on her birthday in 1952. Lawrence (Larry) and the twins Sharon

and Susan were born in Gimli. The family moved to Saskatoon, then North Bay where Donald was born. In 1964 a cottage was purchased from Dick Howard very close to Maria's parents and brothers residences in South Beach. After three years on Vancouver Island, the family returned to Winnipeg in 1968. This is when the cottage got a lot of use. In 1973 Vern was posted to Chilliwack, B.C. where they settled. For the next 20 years, summer vacations were spent at the cottage. Maria always called Gimli 'home'. After selling the cottage in the mid 90's, they would still visit Manitoba in their 4th wheel which they used to see all of Canada and the western states.

Maria was predeceased by her parents and her three younger siblings Robert (Bob), Allen and Audrey White.

She will be lovingly remembered by her husband of 69 years, Vern; her four children; four great-grandsons Gord and Tyson McMaster, Karl and Eric Frantz; her three great-great-grandchildren, Nash, Danica and Holly.

Cremation has taken place. Interment will be in Gimli next summer.

The Express Weekly News Classified booking
deadline is Monday at 4 p.m. prior to
Thursday's publication Please Call 204-467-5836

**FIND THE RIGHT PERSON
FOR THE POSITION with an
EMPLOYMENT/ CAREERS AD in**



Call 467-5836 or Email classifieds@expressweeklynews.ca

BOOK YOUR ANNOUNCEMENT TODAY

- BIRTHDAYS
- MARRIAGES
- ANNIVERSARIES
- NOTICES
- OBITUARIES
- IN MEMORIAMS
- ENGAGEMENTS
- BIRTHS
- THANK YOUS
- GRADUATIONS



Call 204-467-5836

Classifieds

Book Your Classified Ad Today - Call 467-5836 or Email classifieds@expressweeklynews.ca

Reporter/Photographer Wanted

Are you a natural born storyteller with an eye for photography and a passion for community news? The Selkirk Record is currently seeking a full-time reporter and photographer to join its multi award-winning weekly community newspaper.

We are looking for someone who is both motivated and passionate about being the best outlet of interesting and breaking news stories and event coverage in the Interlake and surrounding area communities.

Qualifications:

- A post-secondary degree/diploma in journalism or equivalent experience in a related field
- Strong photography and writing skills with an interest in social media
- Self-starter with the ability to exercise solid news judgement
- Ability to establish professional relationships to consistently source and write a wide range of stories and cover events in a fair, balanced and accurate manner
- Able to work both independently and as a team on a flexible work schedule including both evenings and weekends to meet our weekly editorial deadline
- Experience covering council and school board meetings
- Knowledge of CP Style and about the Interlake and its surrounding communities would be an asset

Please forward your resumé along with three writing and photography samples to:
Email: news@selkirkrecord.ca

Deadline to apply is Friday, November 12.



McMunn & Yates

Building Supplies

BUILDING THE INTERLAKE

We are excited to open our new store in Ashern, MB!

If you are interested in building your career with us, email your resume to:

Jason Bazylo, Regional Support Manager

jbazylo@mcmunnandyates.com

View all career opportunities online at mcmunnandyates.com, or connect with us on Facebook:

<https://www.facebook.com/McMunn-Yates-Building-Supplies-Ashern-MB-109154971564165>

Biz Cards
Get The Job Done!
Call 785-1618

GOETZ SIDING

• 5" Eavestrough • Soffit/Fascia
• Custom Cladding
(204)223-7740 goetzsidings@gmail.com

Custom land clearing & bulldozer work

NORTHERN Farms & Ventures 204.381.2798

Hnatiuk Law

204 - 482 - 5111
Main Street, Selkirk
www.hnatiuklaw.com

Interlake Drone Services

- Real Estate
- Home Mementos
- Inspections
- Business ads

Specializing in Aerial Imagery
info@interlakedrones.com
www.interlakedrones.com
204-802-0181 or 204-642-1293

Innovative Electric

Ph: 204-641-5266
Url: www.innovativeelectric-mb.ca
Email: matthew@innovativeelectric-mb.ca

Hot Steam Carpet Cleaning

Sanifresh
204-642-7770
Serving Gimli and area

JEFF'S PLUMBING SERVICES INC.

• RESIDENTIAL • COMMERCIAL
HNAUSA, MANITOBA

For All Your Plumbing & Repair Needs
- ROTOR ROOTER SERVICES -

• Sewer Camera Cell: 204-485-4227
JEFF FLETT jeffsplumbing1@gmail.com

pampered chef

INDEPENDENT CONSULTANT

- Cooking Shows • Meal Prep Solutions
- Fundraisers • Individual Orders

204-485-4272 call or text
stoneware444@gmail.com
www.pamperedchef.biz/michellebalharry

CONVENIENCE

Grocery • Drinks • Snacks
• Coffee to Go • Ice • Firewood
• Fireworks • ATM • Greeting Cards
• Newspapers • Books • Pet Food
• Toys & more

SNACKS • LOTTO
20088 First Ave, Sandy Hook
FIRST AVENUE

OPEN YEAR ROUND 10AM - 6PM
7 DAYS A WEEK

PharmaChoice LUNDAR

You have QUESTIONS, We have ANSWERS!

- Prescriptions • Liquor Store
- Home Health Care Aids
- Snacks and more!

Advice for Life

LUNDAR PHARMACY 204-762-5431
18 Main St., Lundar

Glass Specialists Construction

- Sealed Units
- Flat Glass
- Mirrors
- Laminated
- Tempered
- Plexi/Lexan

- Windows & Doors
- Siding
- Custom Cladding
- Decks
- Construction/Renovations

19046 Ukrainian Park Road
Camp Morton, MB
204 376 5177
204 642 2980
Intglass@mymts.net

Interlake Glass
WINDOWS, DOORS & MORE

Water Shop

272 Main St. Selkirk, MB
204-482-2277

WE DELIVER

The Water Shop delivers to communities up Highway 9 up to and including the Gimli area.
Call today for water that is "Clearly made for You!"

HAIROLD'S BARBER

Men's Haircuts Shop Boy's Haircuts

NO APPOINTMENTS
WEEKDAY HOURS
TUES - FRI
OPEN 9:30 AM

SATURDAY
OPEN 9AM (Half Day)

1-204-641-2738
145 SUNSET BLVD, SUITE D, ARBORG MALL, ARBORG, MB

NEW VALLEY ROOFING & RENOVATIONS

Serving The Interlake

Henry Reimer 204-642-2551
henry.reimer@newvalleyroofing.com
newvalleyroofing.com
BP & IKO Certified Roofer

ALICEROOFING LTD.

Complete Roofing Service

- Residential
- Agricultural

Licensed & Insured
www.aliceroofing.ca 204-757-9092



SIMPLE PROCESS. TOUGH PROCESSOR.

Meet your new herd-feeding workhorse. The BPX9010 is ready to bring simplicity, durability and versatility to your farm or ranch. Ready to distribute uniform windrows along bunk lines or out in the pasture. Ready to spread bedding with consistency and accuracy at ranges up to 50 ft (15.2 m). Ready to simplify the process of processing bales. It's ready. Are you?



Vermeer and the Vermeer logo are trademarks of Vermeer Manufacturing Company in the U.S. and/or other countries. © 2018 Vermeer Corporation. All Rights Reserved.

SHACHTAY
SALES & SERVICE LTD.
www.shachtay.com

204-376-5233
*Servicing the
Interlake for 55 Years!*
Arborg, Manitoba
Family Owned