

LIONS PLACE

1 BR APARTMENTS

STARTING AT **\$844/MONTH**

AMENITIES

- FITNESS CENTRE
- GREENHOUSE
- MINI MART
- MEDICAL CLINIC



APPLY ONLINE

UTILITIES & LAUNDRY INCLUDED

610 PORTAGE AVE

LHC.CA

THE EXPRESS

VOLUME 9 EDITION 26 THURSDAY, JUNE 30, 2022

www.expressweeklynews.ca

Happy **CANADA DAY**

WEEKLY NEWS

SERVING LUNDAR, ASHERN, ERIKSDALE, MOOSEHORN, FISHER BRANCH, RIVERTON, ARBORG, CIMLI, WINNIPEG BEACH, ARNES, MELEB, FRASERWOOD



WB20XT Water Pump

2" Easy Start
3 year warranty



\$559⁰⁰

PowerSmart 21-inch Gas-Powered 170CC

2-in-1 Smart DB8621C
Push Lawn Mower



\$199⁰⁰

STIHL FS 38 Trimmer

Powerful, durable lightweight
gas powered grass
trimmer, ideal for
lawn edging



Now
Only **\$189**

CubCadet Lawn mower XT1

18 hp, 42" deck, hydro.,
3 yr. warranty
In stock

\$2,799⁰⁰

Cub Cadet



**SHACHTAY
SALES & SERVICE**

Arborg, MB

204-376-5233

Rainy days



EXPRESS PHOTO BY TEE-JAY FURGALA

Emmersyn, right, and Bentley Kmet enjoyed a brisk stroll along the Gimli beach pathway with their Baba Pam on a rainy afternoon on June 21.

> everything you need to know in your locally owned and operated community newspaper

Countryside



Home
building centre

Lot 1, Hwy 17 S, Fisher Branch, MB

204-372-8501

**Humidity got you down?
Our A/C's will get you up again!**

From **\$279!**



GIFF getting set to commune under the projector's magical glow

By Patricia Barrett

The largest rural film festival in Canada is gearing up to host outstanding cinematic works from Canada and around the world and welcome back film buffs to the shore of Lake Winnipeg in July.

The Gimli International Film Festival, which is celebrating its 22nd year, unveiled its diverse lineup of more than 70 films, documentaries and shorts that highlight Manitoba filmmakers, female and Indigenous filmmakers, and filmmakers from circumpolar nations including Iceland, Denmark, Finland and Sweden.

The film festival added “international” to its name this year to reflect its global reach to virtual audiences over the course of the COVID-19 pandemic. But it’s ready to roll with in-person screenings.

“We are very grateful we can bring the festival back to the community of Gimli this summer and welcome back our many visitors for whom attending the festival has been a long-time summer tradition,” said executive director Alan Wong during the festival’s program launch at the Fort Garry Hotel in Winnipeg June 23. “It has become Manitoba’s premiere film festival, bringing film buffs, filmmakers and industry professionals all together to celebrate on the shores of



Alan Wong, GIFF's executive director

Lake Winnipeg.”

The festival’s opening night film is *Band*, billed as “Icelandic performance art meets Spinal Tap” that features three female bandmates who agree to give elusive pop stardom one final chance.

“It’s a story about a group of women who are in a band called Post Performance Blues Band and who’ve been playing to audiences of 10, eight, six people for many years,” said documentary film programmer Shira Newman. “They’re hitting their 40s and



EXPRESS PHOTOS BY PATRICIA BARRETT

Gimli International Film Festival board (from left): Lynn Chalmers, Lila Goodspeed Everett, Terry MacLeod, Norma Bailey and Janis Johnson



David Knipe



Shira Newman

are struggling with what it means to be a female artist in the world, balancing motherhood, caregiving and mak-

ing an income while trying to make art. They’ve decided they’re going to

Continued on page 8



Baker Law

CORPORATION

Do you have a current will?

Protect your family by having a current will, power of attorney and health care directive. Call us or stop in for more information and find out how we can help you.

Grant D. Baker

Barrister, Solicitor and Notary

Providing full time legal service to families and small businesses in Gimli and the Interlake.

GIMLI LOCATION
72 Centre Street, Gimli, MB
Our office is open 9-5 Mon to Fri
204-642-8681 or 1-866-487-5688

RIVERTON LOCATION
33 Main St. Riverton MB
Open Mon & Wed 9:30-4:30
204-378-5427

Flight Training

START YOUR CAREER AS A PILOT!

Becoming a pilot can be a rewarding career

LAKESIDE FLIGHT SCHOOL IS THE MOST AFFORDABLE IN CANADA.
RECREATIONAL, PRIVATE AND COMMERCIAL LICENSE.
AUTHORIZED TRAINING FOR COMMERCIAL PILOT LICENCE, FLIGHT INSTRUCTOR RATING, NIGHT RATING, PRIVATE PILOT LICENCE, RECREATIONAL PILOT PERMIT AND VFR OVER-THE-TOP RATING

Want to learn to fly?

RECREATIONAL PILOT PROGRAM is the best way to get started. Must be 16 years of age. Privileges: fly for fun in a certified airplane, a home-built aircraft or an ultralight; fly by day only in Canada with one passenger. Can easily add float rating to permit.



LS Airways Flight Academy | 311 Anson St, Gimli, MB | 204-642-4799

LAKESIDE
FLIGHT SCHOOL

Gimli goes big on garbage collection with supersized in-ground beach bins

By Patricia Barrett

The Municipality of Gimli is taking garbage to a whole new depth after it installed huge in-ground waste receptacles on Gimli Beach last week.

After struggling to get a lid on the mounds of take-out food containers and other trash over two years of the COVID-19 pandemic — which saw thousands of Manitobans opting for staycations — the RM determined it needed a supersized solution to trash on the beach.

“We had smaller in-ground garbage cans before and they worked well, but these ones are bigger and can take more garbage,” said Gimli Mayor Lynn Greenberg. “With the amount of people coming here on the weekends, it was a challenge to keep the beach clean. The garbage was building up all the time and the bins were overflowing.”

Gimli public works foreman Karl Bergman said they’re installing five new bins. They’ll be located on the beach, the spray park and Moonlight Bay in the South Beach neighbourhood.

“The new bins have a six-to-eight-yard capacity. The existing ones are about half that,” said Bergman. “The larger ones are being added to the beach and some of the existing ones will be relocated.”



EXPRESS PHOTOS BY TEE-JAY FURGALA

Gimli Public Works installed the large in-ground bins on a muggy, rainy afternoon on Gimli Beach on June 21.

For arts sake



EXPRESS PHOTO SUBMITTED

Bale bandits, Hilding and Joan Olson, Brenda Wood, Lynnette Beamish, Linda Nickel and local farmer Tommy Ching have been offering up creations for approximately 10 to 15 years. The group decorates round bales of hay and have done many different characters over the years including a Minion, a surfer, a fisherman, an angel, an RCMP officer, Smokey the Bear, a hula dancer and a scare crow, to name a few.

The land on which their creation sits belongs to a local farmer. Without the use of his tractor and the donation of the bales, their project could not be possible. One committee member comes up with an idea, then they all start scrounging up materials all for the love of entertaining locals, summer campers and tourists who travel along Highway 6. The group enjoyed being able to take this up again after the two-year break for COVID.



The large in-ground bins are next to receptacles for recyclables.

Scenic Flight Tour

\$119 FOR A 3 PERSON FLIGHT TOUR
Book Today!

LS Airways Flight Academy | 311 Anson St, Gimli, MB | 204-642-4799

LAKESIDE
FLIGHT SCHOOL

JULY CONSIGNMENT AUCTION

ITEMS ARE AVAILABLE TO VIEW JULY 11TH TO JULY 20TH FROM 9AM TO 5PM
BIDDING STARTS JULY 21ST AT 9AM AND CLOSSES JULY 28TH AT 10AM

Pickup available July 29th and 30th from 9am to 5pm.
Arrangements can be made otherwise. **CLOSED SUNDAYS**

THIS IS AN ONLINE BIDDING AUCTION ONLY! IF YOU REQUIRE HELP OR DO NOT HAVE INTERNET ACCESS CALL 204-346-2440 OR 204-434-6519. SALE WILL CONSIST OF FARM EQUIPMENT, GENERAL MERCHANDISE, OVERSTOCK AND SURPLUS ITEMS PLUS MUCH MORE. ITEMS ARE SOLD AS YOU SEE THEM. WITH NO WARRANTY.

Call Today if you would like your items Consigned! Office (204) 434-6519

Brad Kehler (204) 346-2440 • Ed Pylypjuk (204) 392-8442 • Darryl Enns (204) 216-0931 • Russ Harder (204) 371-4771

Fate of oldest Icelandic church in Arnes to be debated

Potential transfer to Arborg museum

By Patricia Barrett

The fate of Arnes' Lutheran Pioneer Memorial Church, a designated municipal heritage building, is hanging in the balance as the church board and the church preservation committee prepare to present their arguments at a public hearing as to whether to move the church to a museum in Arborg.

The Municipality of Gimli will be holding a public consultation on July 17 before it makes a decision as to whether to accept the church board's proposal to move the church to Arborg.

The RM had designated the Arnes Lutheran church a municipal heritage building and a heritage site in 2009 under Bylaw No. 09-0010. The church, which is located at the junction of Arnes Road and PR 222, is an example of pioneer baroque style with a square tower fronting a wood-framed church.

The church's preservation committee wants the building to remain in Arnes.

"Arnes Lutheran Church is the old-

est Icelandic Lutheran church in the Rural Municipality of Gimli. The goal of the Arnes Lutheran Church Preservation Committee is to keep the church in the hamlet of Arnes where it has stood for over a hundred years," said committee secretary Catherine Strong last week.

The church was built between 1911 and 1917, and it was moved to its present site in 1920, she said.

In 2019 Arnes residents formed the committee to oppose the church board after it hired a moving company to take the building to the Arborg and District Multicultural Heritage Village. At that time, the committee had come up with a plan to repair the church's foundation and embark on fundraisers to help with its upkeep. The committee had presented to Gimli council a petition signed by about 195 people to keep the church in Arnes.

Gimli's Municipal Heritage Advisory Committee had also expressed its opposition to the board's attempt to move the building to Arborg, arguing that council should hold a public hearing to "determine the will of the people of Arnes" and that the building doesn't belong to the board. The board argued that the best way to preserve the building was to turn it over to the Arborg museum (see Nov. 7, 2019, *Express* edition online).

The COVID-19 pandemic delayed council's organizing a public hearing.



EXPRESS FILE PHOTO BY PATRICIA BARRETT

The Arnes Lutheran Pioneer Memorial Church is a designated municipal heritage building built in the early 1900s and is the oldest Icelandic Lutheran church in the Municipality of Gimli.

The Multicultural Heritage Village preserves and showcases Interlake heritage buildings. The museum's buildings include the St. Demetrius Ukrainian Catholic Church, a Ukrainian bake oven, the Oddleifsson House, the oldest Icelandic building in New Iceland, an ice house that keep food cool before the invention of electric refrigeration, a grist mill and Poplar Heights School, a one-room schoolhouse from the early 1900s.

The Arnes preservation committee said the church is still used for periodic worship services, weddings, recitals, concerts and meetings, and is an important part of the community's collective heritage.

"Sadly, the church is in peril of being moved to a museum setting outside the

community of Gimli. This would be a great loss, not only to Arnes, but to the municipality as a whole," states the preservation committee in its letter. "The church is a heritage building and as such, is an important part of our collective history and heritage, but particularly so to Lutherans and people of Icelandic descent, many of whom have important family ties to the church. Many people to whom we have spoken were married at the church or attended regular services there."

The committee is asking residents to help keep the building in Arnes by attending the July public hearing and expressing their opinion, writing a letter to the RM, asking that it keep the building in Arnes, emailing the RM and pledging future financial support to help with the care, maintenance and repair of the church.

The public hearing is scheduled for Sunday, July 17 from 2 to 4 p.m. at the Arnes Community Hall. The hall is located at 20005 Arnes Rd. (Road 122 N). Sign-up sheets to speak for two-three minutes will be available at the door.

Summer Hours

Monday, Wednesday - Saturday
10 a.m. - 5 p.m. / Closed Tuesday
Sunday 12 - 5 p.m.

Just-Like-New Books!

- Hartmont Candles • Puzzles
- Mordens' Chocolates • Tapestries
- Hotcups Tea • Art Supplies
- SwaiDesigns Fused Glass Birds
- Paint-By-Number Kits

luckystonebooks@gmail.com
www.luckystonebooks.ca

Open 6 days
a week!

Hand-Crafted
Greeting
Cards

Fresh stock
of books
weekly

UPS Access
Point®

**Lucky Stone
Books**

33 Centre Street • Gimli, MB
204-642-9509

the NEW GUY ON THE BLOCK

**NEXT
CONSIGNMENT
SALE
SAT., JULY 2
10AM**

CONSIGN TODAY!

*We want to sell for
you - on your yard
or on mine!*

**Call Jordan
204-651-0008**

**Now Live on
AuctionTime.com**

- Tractors • Yard Equipment
- Trucks • Cars • Furniture • Art
- Jewelry • Implements • Hay Bales
- Construction Equipment • Appliances
- Fishing Gear • Hunting Equipment
- Charity Events & Fundraisers

*Activities for
the whole
family!*



 Ukrainian charity auction
items now being accepted

Proudly supporting
soccer in the Interlake



**NORSEMEN
AUCTION**

204-651-0008

1 mile north and 1 mile west of Chadds Esso • norsemenauction.com

Wednesdays Farmers Market

**Visit the Arborg Heritage Village every
Wednesday to check out what the
vendors have to offer!**



**Every Wednesday
from 10 am to 3 pm**

**Contact Marlene at
204.376.5607 to book a table**



Saddle up, the rodeo is coming to Arborg July 16 and 17

By Autumn Fehr

Strap on your cowboy boots and pull out your cowgirl hats and get ready to take in the Arborg Agricultural Fair, Rodeo and Tractor Pull.

After a two-year hiatus, organizers are excited to welcome everyone back for a fun filled weekend at the Silver Community Centre and grounds July 16 and 17.

The excitement is building, according to Arborg & District Agricultural Society president Jinny Sigurdson. Her team of volunteers have a jam-packed weekend of fun planned, including the usual antique tractor pull, rodeo, kids zone, petting zoo, food trucks and much more.

For almost a century, the rodeo has come and gone in the town of Arborg.

The rodeo and tractor pull has been a part of what brought the town together as a community.

Since the Arborg & District Agricultural Society was established in 1924, it has played a significant role within the community. It continues to celebrate Arborg through the traditions it brings along with it.

For the past six years, Sigurdson, with her group, has overseen the planning and organization of the Agricultural Society Rodeo and Tractor Pull to ensure it comes back every year for the community.

Sigurdson said the fair has taken on many faces, as many different groups have run it over the years.

The rodeo has always been a part of Arborg's history, as far as the Ag Society has been around.

Sigurdson said that since they have a lot of horse and cattle enthusiasts in town, a rodeo makes for the perfect match as an event.

The story of the tractor pull also goes way back.

Sigurdson said a group of people were interested in getting old antique tractors, pulling them out of the bush and restoring them, and the tractor pull blossomed from there.

"It starts with somebody with a passion and then it kind of builds from that," said Sigurdson.

This particular group, led by Sigurdson, has taken over the fair that origi-

nally started in Arborg but eventually moved its grounds to Silver, Man.

There is a lot that goes into planning the annual Ag Society Rodeo and Tractor Pull so it all comes together for the community in the end.

Planning a fair of its size with a large variety of activities wouldn't be possible without dedicated volunteers who run the fair.

Britta Hurst, the organizer for the kids zone at the event this year, said that this involves many meetings, searching for volunteers and brainstorming so it is a hit.

"I have kids, so trying to get off of that and what they like to do at other fairs and what has been done in the past that is always popular and then trying to find a few things that are new are a part of the process," said Hurst.

During a typical year, the Ag Society starts planning the fair the year before, booking different vendors and equipment, as many things need to be booked a year in advance.

Although Sigurdson said this year, things didn't go as they are usually planned.

Due to the uncertainty at this time last year, the group wasn't able to book things in advance as they didn't know what it would be like within a year from then — if people would even be able to attend the fair like usual.

Sigurdson said by the time they were sure there weren't going to be restrictions and they could go ahead, it was already April.

"It was kind of a late start, but I think given the circumstances, we did quite well to get all that we've gotten done with a new group of people," said Sigurdson.

This year, the Ag Society has taken on a lot of new volunteers.

"After about 10 years, a lot of people in the group that were doing it just got burnt out. It's a big undertaking, and takes out a big part of your life," said Sigurdson.

Sigurdson said she had to sit down with her sister, who is also a part of the board, and



EXPRESS FILE PHOTO SUBMITTED

The festivities of the annual Agricultural Society Rodeo and Tractor Pull return after two years away.

write down specific job descriptions, what they had to do, and deadlines for each role so it was clear to volunteers what tasks they had to do and what they had to take on.

"I think putting that together helped a lot, so people knew what they were coming into," said Sigurdson.

The Rodeo and Tractor Pull has been a consistent event that people look forward to through the years.

Both Sigurdson and Hurst have been around the fair since they were young and remember the time they went there as kids.

"I think it's important to have something big to go to close to home, so you're not travelling all over the place. It's something that's happened every year since I was young so it's a consistent thing that you can go to and spend the day or two days there with the kids, and the kids love it. There's always something different," said Hurst.

"It's like a homecoming. Everybody comes home from the fair and families get together, and people just relax and enjoy the time. Being a part of the

community is a part of what we do," said Sigurdson.

Every town has their fair that they put on.

Sigurdson says the fair is also an opportunity to show off what the town has to offer in their neck of the woods.

Many people come from across Manitoba to visit the fair each year.

"The fair isn't just for the town. It's an outreach to all of the RMs and towns within our area because we get support from everywhere, not just Arborg," said Sigurdson.

A fair is a gathering place, and that's exactly what the Ag Society Rodeo and Tractor Pull hopes to create for all Manitobans who visit the fair this summer.

Take care of details so they don't have to. **Just ask Ken.**

kl
KEN LOEHMER
FUNERAL SERVICES

55 Main St, Teulon Call 204-886-0404 or visit www.klfuneralservices.ca



RURAL MUNICIPALITY OF GIMLI OPEN HOUSE Arnes Lutheran Pioneer Memorial Church

The Municipality is hosting a community meeting for public consultation prior to rendering a final decision on the application from the Arnes Lutheran Church Board regarding relocation of the Arnes Lutheran Pioneer Memorial Church to the Heritage Village in Arborg.

Date: July 17th, 2022
Time: 2:00 pm to 4:00 pm
Location: Arnes Community Hall, 20005 Arnes Rd. (Rd 122N)

THE Flicks CINEMA

319 First Street E., Stonewall, MB

SHOWTIMES:
Please check individual listings
Due to various picture lengths showtimes vary

204-467-8401
PROGRAM SUBJECT TO CHANGE WITHOUT NOTICE
Cash only

FRI-THURS JULY 1-7
CLOSED TUESDAY
ELVIS
at 7:30 pm Each Night

Coarse Language **PG**

FRI-THURS JULY 8-14
OPEN TUESDAY
MINIONS THE RISE OF GRU
at 7:30 pm Each Night

Animated **G**

THE EXPRESS
WEEKLY NEWS**PUBLISHER**
Lana Meier**SALES**
Brett Mitchell**SALES AND MARKETING**
Jasmin Wolf**REPORTER/PHOTOGRAPHER**
Jennifer McFee**SPORTS EDITOR**
Brian Bowman**REPORTER/PHOTOGRAPHER**
Patricia Barrett**ADMINISTRATION**
Corrie Sargent**PRINT**
Dan Anderson**REPORTER/PHOTOGRAPHER**
Becca Myskiw**DISTRIBUTION**
Christy Brown**PRODUCTION**
Debbie Strauss**PRODUCTION**
Nicole Kapusta**ADMINISTRATION**
Jo-Anne Procter**ADMINISTRATION**
Allana Sawatzky

OUR SISTER PUBLICATIONS

Tribune
The Carman-Dufferin
STANDARDSelkirk Record
The Voice

The Express Weekly News received financial support from the Government of Canada in 2021.

getheard > Got news?

NEWS > VIEWS > GIMLI > ARBORG > HIGHWAY 6 > SURROUNDING AREAS

Call Patricia Barrett
1-204-407-6099
patricia@expressweeklynews.ca

Wage equity in the early learning and child-care sector

By Manitoba government

The governments of Canada and Manitoba announced the allocation of nearly \$37 million to implement a wage grid that will support wage equity for the early childhood workforce in funded child-care facilities.

"Our government recognizes that a well-compensated workforce is essential to stabilize and strengthen the early learning and child-care sector and is a critical step in addressing labour market shortages," said Manitoba Education and Early Childhood Learning Minister Wayne Ewasko. "This investment will support the dedicated staff who provide high-quality care and early learning opportunities that promote positive early childhood development outcomes, setting the stage for the lifelong success for young Manitobans."

Under the Canada-Manitoba Canada-Wide Early Learning and Child Care Agreement, \$34.7 million will be allocated to the existing operating grants through an additional Wage Grid Supplement to support wage equity for early learning and child-care sector staff who care for children under the age of seven.

The funding will allow non-profit child-care boards to develop fair, consistent and competitive wage scales for early childhood educators and

child-care assistants across the province. The wage grid in the Canada-wide agreement sets out equitable wage targets to provide funded facilities with guidance on wages for child-care assistants and early childhood educators.

"Early childhood educators are at the very heart of the Canada-wide early learning and child care system," said federal Minister of Families, Children and Social Development Karina Gould. "Today's announcement with Manitoba is a meaningful step in valuing their essential work and ensuring they have the support they need to continue caring for our children every day."

The wage grid supplement will be effective as of July 1 and will help the sector retain qualified, experienced staff and boost recruitment efforts. Through the Wage Grid Operating Supplement, all funded facilities will receive a 12 per cent increase in the revenue generated per space, to support increased, equitable staff wages.

The Manitoba government is investing an additional \$2.3 million to ensure staff working in school-age child-care programs are also fairly and consistently compensated.

"Today's announcement builds on recent investments under the extension of the Canada-Manitoba Early

Learning and Child Care Agreement announced in February 2022. At that time, \$6.6 million was allocated toward the Wage Bridge Benefit, which would carry us over to the launch of the wage grid," said Ewasko. "The Wage Bridge Benefit provided a one-time retroactive wage supplement for the lowest-paid child-care assistants and early childhood educators during 2021-22, to increase their wages and move us closer to the targets outlined in today's wage grid announcement."

The development of a wage grid is a commitment made by all provinces and territories outside of Quebec as part of the investment to build a Canada-wide early learning and child-care system.

"The Manitoba government recognizes the invaluable service of the province's child-care assistants and early childhood educators, and we are proud to be one of the first jurisdictions in Canada that is ready to proceed with implementing a wage grid to better support the early childhood learning workforce," said Ewasko. "These important investments are part of our ongoing commitment to ensuring all Manitoba families, regardless of where in the province they live, have access to high-quality, affordable, flexible and inclusive early learning and child-care services."

Red River Co-op donates \$30,000 to NorWest Co-op Community Health

Submitted

Red River Co-op is pleased to announce a donation of \$30,000 to NorWest Co-op Community Health for their urban community farm. The funds will purchase a rainwater harvesting system and farm equipment for use in the farm garden.

"NorWest Co-op is doing terrific work to increase food access in the community and Red River Co-op has been proud to support NorWest Co-op with \$20,000 in Co-op food gift cards in recent years for their Community Food Centre," said Doug Wiebe, CEO of Red River Co-op. "This urban

community farm will further develop food production skills and support long-term food security for the community."

The farm-site is a three acre undeveloped site within a city park located

Continued on page 12

ADVERTISING OR PRINT
CONTACT INFORMATION

Lana Meier 204-292-2128
ads@expressweeklynews.ca
Jasmin Wolf 204-771-8707
ads@stonewallteulontribune.ca
PHONE 204-467-5836
FAX 204-467-2679

> EMAIL US

Letters to the Editor: letters@expressweeklynews.ca
Classifieds: classifieds@expressweeklynews.ca
News: news@expressweeklynews.ca
Print: igrphic@mymts.net

OUR EDITORIAL STAFF

Brian Bowman Sports Reporter
sports@expressweeklynews.ca
Patricia Barrett - Reporter/Photographer
Cell 204-407-6099 patricia@expressweeklynews.ca
Emma Honeybun - Reporter/Photographer
ehoneybun777@gmail.com | 204-898-9358
Autumn Fehr - Reporter/Photographer
204-998-1993

PAPER DELIVERY OR FLYER CONCERNS

Christy Brown, Distribution Mgr.: 204-467-5836

The Express Weekly News is published Thursdays and distributed through Canada Post to 11,396 homes. Republishing in whole or in part without permission is strictly prohibited. Printed in Canada by Prolific Printing.

This newspaper is supported 100% by advertising dollars. If you enjoy the paper and would like to see the newspaper grow and prosper visit any of the advertisers and businesses in our rural communities. - Keep your dollars working at home and shop local. Our commitment to you, the reader - we connect people through stories to build stronger communities.

Advertising Deadline: Monday 4:00 pm
prior to Thursday Publication

View the Express Weekly News online at
www.expressweeklynews.ca



ADDRESS

74 Patterson Drive, Stonewall Industrial Park
Box 39, Stonewall, MB R0C 2Z0

Doctors Manitoba raises alarm about unstable rural, northern health care

By Patricia Barrett

As Manitoba's health-care system continues to experience multiple crises of nurse, physician, paramedic and other health-care worker shortages, as well as a huge backlog of diagnostic and surgical procedures, Doctors Manitoba sounded the alarm last week about the instability of health care in rural and northern Manitoba.

The physician advocacy organization, which represents over 4,000 physicians across the province, is concerned about "severe" staff shortages in the province's rural and northern health regions, which are seeing hospital and emergency room closures or limited service that could jeopardize Manitobans' health.

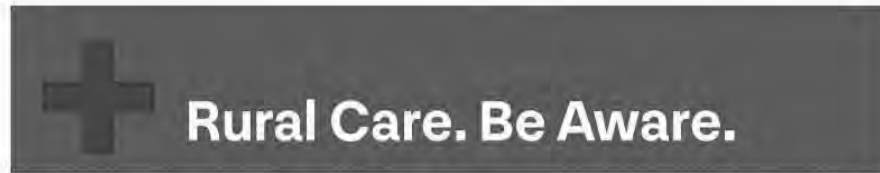
The organization launched a "Rural Care Be Aware" campaign that offers advice on how to prepare for emergencies and how to access care this summer when it is "anticipated more hospitals than ever could have ER closures or reduced operating hours."

"Whether you live in rural or northern Manitoba or you are planning to travel to communities in these areas, doctors want to support you with accessing needed medical care," said president Dr. Candace Bradshaw in a June 24 news release posted on Doctors Manitoba website. "Our new public resource RuralCare.ca will help Manitobans be aware about how to access rural care, including how to plan ahead and what to do in a medical emergency."

Planning ahead includes knowing where the closest and the second closest ERs are, knowing what health region you're in and where the health authority for that region posts information about ER hours and closures.

"Schedules can change with little notice," states RuralCare.ca.

Staffing shortages could result in long waits for service, including the arrival of an ambulance. Paying attention to road numbers or landmarks is important to help emergency services locate someone who needs medical intervention. People can also determine whether alternate care services



Some hospitals in rural and Northern Manitoba are likely to experience ER closures or reduced hours this summer, perhaps more than ever before.

Whether you live in a rural or Northern community, or you have plans to travel in these areas, doctors want to ensure you are aware of potential closures or reduced hours and how to find emergency or urgent care when needed.

Be sure to **plan ahead** when in rural or Northern communities, and **know what to do** if someone needs emergency or urgent care. We've put together some advice below to help you.

DOCTORS MANITOBA

Doctors Manitoba raised the alarm last week about hospital ER closures and/or limited health-care services over the summer in rural and northern health regions. It launched RuralCare.ca to provide residents and travellers with practical advice on how to plan ahead for emergencies.

are available in an area, such as local doctors' offices, says the website. A list of hospitals in each of the five health regions is provided on the site.

Doctors Manitoba says physicians are increasingly concerned about maintaining health care in rural and northern areas because of the shortages of physicians, nurses and other health-care staff.

"Even before the pandemic, physician and staffing shortages were making it difficult to maintain services in some facilities, resulting in long waits, reduced hours and closures," says the organization.

Dr. David Cram, a physician in Souris, advises people to plan ahead based on his own experience of facility closures.

"In all my years practicing medicine in rural Manitoba, I've never seen so many ERs closed or only open part time," said Dr. Cram in the Doctors Manitoba's news release.

There are 68 hospitals and health centres in rural and northern communities, says the organization. Only 40 per cent of emergency rooms are anticipated to be open 24-7, while 34 per cent are anticipated to operate part time, with reduced hours or temporary suspensions. The 26 per cent of ERs that have been closed for more than a year are not expected to re-open this summer.

Hospitals in the Interlake-Eastern Regional Health Authority have been experiencing ongoing temporary ER closures for years because of physician shortages, and some hospitals, such as Teulon, have had their ERs permanently shuttered. ERs shut down when there's no doctor to staff them.

The IERHA posts ER availability schedules two weeks in advance on its website. For the period July 1 to 15, Interlake hospital ERs in Ashern, Selkirk and Stonewall are expected to be available 24 hours a day. Gimli's ER will be closed one day and experience another day with limited service; otherwise, it's expected to be open 24 hours.

ERs in Eriksdale and Arborg, however, have extremely limited service, with only four days between them on which a doctor is expected to be available.

The IERHA's emergency department schedule is posted on the main page of its website. People can also call 1-866-267-5818 at any time to access an audio recording of the IERHA's emergency department status.

The health authority advises that ER schedules can change quickly, resulting in disruptions to service.

Other health news:

- The provincial government's weekly COVID-19 surveillance re-

port for June 12 to 18 shows 203 new cases of the virus that were confirmed by limited PCR testing. The results of rapid antigen tests are not recorded by the province. The province's data is an undercount of the true number of infections.

There were also 58 new hospital admissions for COVID that week, of which eight required intensive care treatment. Six more Manitobans died from the virus, bringing the death toll to 2,025.

In the U.K. and in European countries such as France, Germany, Spain, Greece, Portugal and Denmark, COVID is accelerating with the rise of the highly infectious BA4 and BA5 omicron subvariants and is leading to an uptick in hospital admissions. The surge is exacerbated by the lifting of public health protections, waning immunity from vaccination and holiday travel. Health experts expect more deaths.

- Doctors Manitoba's surgical and diagnostic backlog dashboard shows 166,903 procedures in the queue, as of May 31.

- The Public Health Agency of Canada reported a significant rise in monkeypox cases last week, bringing the total to 235, with Quebec reporting 184 cases, Ontario with 45, Alberta with four and British Columbia with two cases as of June 24. A total of 168 cases was reported on June 17.

The World Health Organization is calling for a "unified response" from all countries, whether they're endemic for the virus or not. Monkeypox has spread to 42 countries. There have been 2,103 lab confirmed cases between Jan. 1 and June 15, as well as one death.

"Confirmation of one case of monkeypox in a country is considered an outbreak," said the WHO in a June 17 update. "The unexpected appearance of monkeypox in several regions, in the initial absence of epidemiological links to areas that have historically reported monkeypox, suggests that there may have been undetected transmission for some time."

Kiwanis and Yacht Club partnering in 4th annual Lake Winnipeg Fundraiser

Submitted by Heather Ritchie

This year's "Save The Lake" fundraiser will be the fourth annual, with the joint partnership between the Gimli Yacht Club and The Kiwanis Club of Gimli and District.

This year's event has already begun with an online auction, which will run until 3 p.m. on July 3.

The main events will begin on July 3 at 10 a.m., beginning with a presentation on Netley Marsh Rehabilitation by managing director Dave Strang

from the Red River Boundary Commission at the Yacht Club followed by a Kiwanis fish fry from 11 a.m. to 3 p.m. People can come in person to enjoy the fish fry and associated events at the Gimli Yacht Club or support the project online.

The fish fry can be purchased in advance online or in person on July 3. The meals will be available for pick up at the Kiwanis mobile kitchen in the front yard of the Gimli Yacht Club. There will be many exciting events

during the day, including an open house of the yacht club, sailing school demonstrations and, hopefully, if conditions allow, a tour of the Lake Winnipeg research vessel, The Namao. There are great prizes available at the online auction currently in operation. Once again, a ride on the research vessel, The Namao, will be the star auction prize.

To date, the groups have raised over \$30,000. The project began with both groups realizing the importance that

Lake Winnipeg plays to all Manitobans but especially to those who reside along its shores. Funds raised by this event are divided equally between The Lake Winnipeg Research Consortium and The Lake Winnipeg Foundation.

Information and links to the auction, merchandise and information about the "Save the Lake" event can be seen by Googling "Save The Lake Gimli" or phone Heather at 204-228-1787.

Nursing vacancies keep beds suspended at Gimli hospital

By Patricia Barrett

Nursing shortages in Interlake-Eastern Regional Health Authority hospitals are continuing to knock acute care beds temporarily out of commission, according to the IERHA's chief executive officer Marion Ellis, who provided an update on nurse vacancy rates, bed suspensions and training and job opportunities to municipal officials on June 22.

Gimli hospital has 26 beds, of which 11 are currently suspended because of nursing shortages. The nurse vacancy rate is 21 per cent at the hospital. Stonewall hospital has 15 acute care beds. Currently, no beds are suspended, but the hospital has a 20 per cent nurse vacancy rate.

Beausejour hospital has 24 acute care beds, of which none have currently been suspended, but it has a 25 per cent nurse vacancy rate. Pine Falls hospital has 23 acute care beds, of which six have currently been suspended. It has a 65 per cent nurse vacancy rate.

Ellis also said there are disruptions

	IERHA	Manitoba
Year		
2018	23	353
2019	18	357
2020	17	347
2021	19	322
YTD 2022	5	85
TOTAL	82	1,464
% of total	5.60%	100%

Nursing retirements over a four-and-a-half-year period in the province and the IERHA.



Marion Ellis, IERHA CEO

to regional laboratory services.

She released nursing retirement data, showing province-wide retirements at 1,464 between 2018 and April 27, 2022. Of those retired nurses, 82 (or 5.6 per cent) worked in the Interlake-Eastern region.

Licensed practical nursing students are completing practicums in health-care facilities across the region, according to data shared by Tanya Cheetham, the IERHA's chief nursing officer.

There are 23 licensed practical nursing students from Assiniboine Community College completing their senior practicums from June 27 to Aug. 26 in the following hospitals: Ashern: 2; Arborg: 2; Beausejour: 3; Eriksdale:

Continued suspension of hospital beds				
Hospital	# of beds	Beds suspended	# of beds currently	Vacancy rate (nurses)
Beausejour	24	0	24	25%
Gimli	26	11	15	21%
Stonewall	15	0	15	20%
Pine Falls	23	6	17	65%

PHOTO SUBMITTED IERHA

Acute care beds suspensions and nursing vacancies in IERHA hospitals. A nursing shortage in the IERHA has led to ongoing bed suspensions at hospitals.

2; Gimli: 2; Pinawa: 2; Selkirk: medicine ward: 3; surgery ward: 3; family birthing unit: 1; Stonewall: 2; and Teulon: 1.

And an IERHA spokesperson said bachelor of nursing students will be completing their rural training in the fall.

"We are working with the University of Manitoba to have bachelor of nursing students complete their rural experience in the fall at some hospitals in the region. These training placements will start in late October and run until Dec. 16, 2022," said the spokesperson. "We have Arborg confirmed to accept nursing students. We continue to work on establishing Eriksdale, Stonewall and Pinawa as training sites for the same time frame. In addition, we are in discussion with this university to arrange for them to send us practicum students three times per year starting in 2023."

Health-care training programs will be offered in select towns across the region.

Assiniboine Community College is offering a full-time, six-month health-care aide training program in Ashern starting in September, and a licensed practical nursing program will be offered in Arborg in September.

Medical lab assistant training is being offered in August at Robertson College and Herzing College, with practicums available in Gimli, Selkirk, Stonewall, Ashern, Beausejour and Pine Falls.

The IERHA is on a hiring spree, looking for nurses, health-care aides, dietary aides, assistant cooks, house-keeping aides, laundry aides and administrative staff.

For a list of health-care training opportunities and jobs, visit www.ierha.ca or email questions to info@ierha.ca.

> GIFF, FROM PG. 2

have an enormous concert and give it one year to try to make it."

Newman said the festival has a large number of Canadian documentaries this year, including *Geographies of Solitude* about Sable Island's (southeast of Nova Scotia) ecosystem. The island is populated by wild horses, seals and a naturalist who has lived there for 40 years, documenting the island and the garbage that washes up on it.

"It's a beautiful portrait of someone who is incredibly connected and passionate about her connection to the land," said Newman.

GIFF's international feature film programmer David Knipe said the festival will be screening 19 fiction feature films, nine of which were produced in Canada. They include Indigenous films *Wildhood* and *Slash/Back*.

On the Icelandic film front is *Quake* (or *Skjalfti* in Icelandic), a "bold psychological thriller" about a woman with amnesia who starts to have repressed memories from childhood against a "snowy backdrop of Ice-

land," said Knipe.

On the Saturday of the festival, film-goers are in for a surprise with a "super-secret late-night screening" of a debut Manitoba feature film. Knipe said "we can't tell you what it is," only that it's "classic Winnipeg irony and self-deprecating humour" and it will be "a blast."

"Our audiences are sure to be impressed by the scope of these and all the other films we have selected for their mastery and skill, and you'll recognize them as a group of the best films released in the last two years," said Knipe. "After these past two years of interfacing with the festival through a screen, I for one can't wait to get back to Gimli in July, share in the power of cinema together and commune under the projector's magical glow once more."

And where else but Gimli can you sit under the stars with your toes in the sand and Twizzlers in hand to watch free films on a massive screen set up on the shore of Lake Winnipeg. GIFF board member Terry MacLeod

announced RBC's free Sunset Screenings — *Cast Away*, *Lilo & Stitch*, *Mamma Mia*, *Life of Pi* and *Nine to Five* — which will start at 9 p.m. each night on Gimli Beach.

Manitoba filmmaker Norma Bailey announced that Eagle Vision (Manitoba production company) founder Lisa Meeches will be the recipient of the festival's Jack Clements Living the Dream Award. And festival founder Janis Johnson announced that Canadian documentary filmmaker Nettie Wild will be the recipient of the festival's highest honour, the Alda Award.

The festival includes the RBC emerging filmmaker pitch competition, in which finalists will get a three-minute shot at \$10,000, earn a little PR and some professional feedback.

The festival is set for in-person screenings from July 20 to 24. And starting on July 25, the festival goes virtual with a selection of the best until Aug. 7.

Visit gimlifilm.com for a full schedule films and events.

Community Support Service

Al-Anon
Gimli and Winnipeg Beach
Meeting place
17B North Colonization Rd.
Gimli (Next to the New Horizons)
Meetings are Wednesdays
between 7 and 8 p.m.
Contact 204-389-4777

AA Winnipeg Beach
Lady of the Lake RC Church
Corner of Hwy. 9 and Lake Ave.,
Winnipeg Beach
Meetings are Saturdays
between 7 and 8 p.m.
Contact Ann J 204-389-3417

Gimli Group AA
Bldg 18 Municipal Rd
Industrial Park
Fri & Sun Mtgs at 7:30 pm
Womens Mtgs Thurs at 10:30 am

Viterra celebrates grand opening in Rosser

By Jennifer McFee

A new Rosser-based grain facility celebrated its grand opening last week as the cream of the crop in the agricultural industry.

On Wednesday, June 22, Viterra invited customers, employees and government officials to gather for a ribbon-cutting event, catered lunch and facility tours to commemorate the company's investment in the area.

Territory manager Brad Flavel welcomed the crowd to the outdoor event at the state-of-the-art grain facility.

"Viterra has been serving farmers here in this area of Manitoba for 100 years. As we know, many things have changed in agriculture during this time — innovations in equipment, seed technology improvements, better agronomic information at our fingertips. However, one thing has remained the same and that is the importance of providing the best possible service to our growers to connect them to global grain markets," he said.

"I believe Viterra is the industry leader when it comes to superior customer service, and this elevator is a great example of our commitment to making the necessary investment to ensure that we remain top of the heap."

Kent Klimpke, Viterra's director of country region management, is now based out of Regina but he originally hails from the Stonewall area.

"We're proud of our history and we're really focused on the future," he said.

"This significant investment of this grain elevator demonstrates our confidence in the province and will continue to play an important role in global agriculture for many years to come."



Kent Klimpke, Viterra's director of country region management.

The facility started receiving grain in October and they've been pleased with the results, especially considering the challenges with last year's harvest, Klimpke added.

"This facility has got 34,000 tonnes of storage. It has the capability to load 156 rail cars, and they'll load those within a 12-hour shift. It really represents the ongoing commitment to driving excellence in the transportation and supply chain," he said.

"This location is an excellent fit for our company. Through modern technology, we have the capability to unload a Super B in five minutes or less."

The company has a global reach that currently extends to more than 60 countries, he noted.

"We at Viterra are supported by an international network that provides us with unrivalled market intel. It's an exciting time. We continue achieving this outside our borders, but we always realize it's communities like this one that allow us to do so. That's why every day we work hard to provide superior service and top quality products to our end-use customers," Klimpke said.

"We continue to make steady investments in technology to make it easier for you to do business with us. We also invest in our people through training and education and, as trusted advisors, they take great pride in working with their grow-

ers to help them succeed. We've put together a really good team here at Rosser, and I'm confident we'll continue Viterra's tradition of excellence for growers here."



EXPRESS PHOTOS BY JENNIFER MCFEE

Officials gathered for a ribbon-cutting event at the new Rosser-based facility.

ers to help them succeed. We've put together a really good team here at Rosser, and I'm confident we'll continue Viterra's tradition of excellence for growers here."

He also recognized that the provincial government has been supportive of the project right from its early roots.

"As builders of this great community in this region, I thank you for the opportunity to expand our presence here," Klimpke said.

"We're pleased to be part of the business landscape at Rosser and to be a contributor to its economic development and prosperity."

Lakeside MLA Ralph Eichler brought greetings on behalf of the provincial government.

"The benefits of this facility to the area is huge, and I thank Viterra for their investment in our community and the opportunity that it creates for economic growth," Eichler said.

"It puts us on the world market. We're proud of that. We like to be able to say our grain goes around the world."

At the same time, Eichler recognized the municipality's efforts to bring this project to fruition.

"I want to thank Rosser as well for their hard work. They've had lots on their plate," Eichler said.

"CentrePort is a large investment within the community and certainly it helps us grow and prosper as a province as well."

On behalf of the RM of Rosser, Coun. Ken Mulligan addressed the crowd.

"The opening of this beautiful facility in the RM of Rosser is a great addition to the area. To date, this makes three inland grain terminals, a fertilizer storage facility, two family-owned implement dealerships, a soon-to-



The facility has the capacity to load 156 rail cars during a 12-hour period.

open an oat flour mill, a new limestone quarry and, also located in CentrePort, Merit Foods," Mulligan said.

"We are proud of the growth and accomplishments within CentrePort to date, but the rural areas of the RM have made many new exciting additions as well."

This new Viterra facility is only one part of the picture, he added.

"The people who are involved in running this elevator are the ties to the farmers. I have the inside track to these people because I've known them for years. They started their careers just south of this building in the old elevator. I know that they will work hard to earn your respect and business as the years go on," he said.

"We at the RM council are pleased



Viterra's new grain facility has 34,000 tonnes of storage.

Continued on page 11

Sadie Grimm a hero for female motorcyclists

Fundraising continues for picnic shelter in Winnipeg Beach

By Autumn Fehr

Growing up, many people have someone or something they look up to.

For reasons big or small, someone may look up to another individual because of something noteworthy they've done that has some sort of significance to them in their lives.

Whether that be someone in your family, a friend, or a celebrity, it's not uncommon to look up to someone or have someone that stands as a role model figure in life.

Sadie Grimm, a female motorcyclist from Winnipeg, is a role model for not only female motorcyclists but other motorcyclists and individuals alike.

"Her story shows you can get out there and do things that you would never ever think you could do. It also shows for any rider, any person today, that if you face a challenge, just look at it, do it safely, but take it on, don't back away from it," said Mary Johnson, chair of the Coalition of Manitoba Motorcycling Groups (CMMG) Sadie Grimm Committee.

In 1914, long before women had the legal right to vote in Manitoba, 19-year-old Grimm won the first motorcycling prize as a woman awarded in Canada in competition with other men.

"It was very unusual to have women motorcyclists at that time. Women weren't independent in the same way they are now," said Carolyn Peters, president of the CMMG.

The 100-kilometre challenge on June 20, 1914, was a trip from Winnipeg to Winnipeg Beach, across the bog and mud with no roads.

"It was an inspiration as it wasn't common for women at that time," said Peters.



Carolyn Peters and Lise Léveillé were prize winners at the Sadie Grimm Ride.

Grimm succeeded, winning the gold medal when many other male motorcycle riders had failed before her.

"When we tell that story today, both men and women are pleasantly surprised by it," said Peters.

In 2015, Ross Metcalfe of the Antique Motorcycle Club of Manitoba (AMCM) found out that the annual CMMG Women's Fun Ride passed through the Winnipeg Beach area.

The AMCM, or the Manitoba Motorcycle Club as it was formerly known, was the organization that sponsored the competition Grimm won back in 1914.

The two groups got together and women riders learned about Grimm's gold medal ride and continued their ride, following the same route Sadie took over 100 years before.

The group decided they had to know more about this important female figure, so Peters and her husband Paul Peters proceeded to do intense research, eventually tracking down her grandson in California and ultimately learning more about Grimm and her life.

In 2016, the CMMG organized the first Sadie Grimm Ride to commemorate her mark on history.



EXPRESS PHOTOS BY CAREY LAUDER

The Headingley Reunion band (Harold Edie, Paul Peters, Rob Barb and Gerry Dueck), performed at Hunt's Roadhouse for the last Sadie Grimm Ride event on June 12.

In 2022, the group held their sixth Sadie Grimm Ride on June 12, gathering at Hunt's Roadhouse near Petersfield and Clandeboyne to ride in celebration of Grimm.

The annual ride happens in the Interlake, with the routes slightly adjusted each year to change it up for participants, stopping at various towns, such as Stony Mountain, Teulon, Inwood and Gimli.

The ride tends to take participants about three hours as they stop to enjoy the scenery and take stops at different places along the way.

"We've really spread it out to make it a real Interlake experience and trying to capitalize on that ride and sort of that environment Sadie was riding in at the time, except we get paved roads," said Johnson.

In 2017, Grimm was inducted into the Canadian Motorcycle Hall of Fame and honoured by the Nellie McClung Foundation in 2020 as a part of the 150 most notable women in Manitoba's history.

The CMMG Sadie Grimm Committee is fundraising to construct a commemorative picnic shelter at Winnipeg Beach Provincial Park, not far

from where Grimm ended the race at the Winnipeg Beach Express Hotel.

To date, the work has been done by volunteers.

The most recent fundraiser that has proven to be their most successful so far was a suggestion made by the mayor of Winnipeg Beach. The group has been selling bricks that can be personalized and will later be put inside the base of the picnic shelter.

The group hopes to have the picnic shelter built at the designated site in Winnipeg Beach by May 2023.

The CMMG Sadie Grimm Committee anticipates having a ribbon-cutting and grand opening of the new picnic shelter on the waterfront at Winnipeg Beach on June 11, 2023.

Motorcycling is still seen by many today as a men's sport, a male mode of transportation and a leisure activity, so the Grimm's story always seems to catch people's attention that a woman in the early 1900s was promoting motorcycling as being good for women's health and independence.

"Motorcycling, for me, is freedom. You get your hands on those handlebars and you have to dump everything out of your head, and you just have to focus on your ride," said Johnson.

Today, women are the fastest-growing demographic learning to ride motorcycles in North America.

"When we talk to woman motorcyclists, many women have been told by different people in their lives that they would never learn and those are often the ones that are really determined to figure it out," said Peters.

There are a lot of opportunities to learn to ride today, such as training courses for anybody that wants to learn, be that man or woman.



Participants of the Sadie Grimm Ride at Hunt's Roadhouse.

Storm clouds movin' while the thunder rolls and the lightnin' strikes



EXPRESS PHOTO BY JACKIE SAURETTE

Storm clouds rolled through parts of southeastern Manitoba early Friday night before tapering off into the evening. Environment Canada issued thunderstorm warnings with the possibility of strong winds, heavy rain and nickel-sized hail. The weather system dumped up to 53 millimetres in one hour in Winnipeg and surrounding communities. Since June 1, some Interlake communities have received up to 220 millimetres, according to Manitoba Agriculture. The weather system also prompted tornado watches and warnings in northwestern Ontario, all of which had been lifted shortly after 9 p.m. Jackie Saurette captured this photo over Lake Winnipeg at 7:15 p.m. last Friday. Help the Express record the weather of the week and send in your photos of friends or family enjoying the outdoors. Email: weather@expressweeklynews.ca.

> VITERRA, FROM PG. 9

that Viterra chose this area to build in."

Construction facts:

- Approximately 1 million pounds of rebar was used, along with 5,600 cubic yards of concrete.
- There are 550 piles under the

structure.

- During the concrete pour, two teams worked around the clock in 12-hour shifts for one week.
- The final height is 130 feet of concrete and the steel above it is at 210 feet.
- The total capacity of this facil-

ity is 34,000 metric tonnes in 34 bins (or about 1.2 million bushels).

Clearance Sale

FILL A TRAY SALE

All Bedding Plants **\$10/tray**

All Basket Stuffers **\$15/tray**

...and more!

Good selection still available

in Arborg Hwy #68 West

facebook

instagram

1/4 Mile West of Hwy #7 on Hwy. #68, 1/8 mile south on Hatchery Road.
Mon. to Sat. 9 am - 6 pm
myfriendlyflowers.com Phone: (204) 376-2727

Made in Manitoba
Vendor Marketplace
July 1 - 12:00 pm - 3:00 pm

July 1st-3rd

Parade Starts at 11:00 am

LIVE ENTERTAINMENT

GIMLI HARBOUR STAGE

Main Street Exiles
July 1 - 7:00 pm - 11 pm

The Incredibly Hip
July 2 - 8:00 pm - 11 pm

COME CELEBRATE WITH US

GIMLI CANADA DAY

Fireworks!
July 1 - 11:00 pm
Gimli Harbour

On Location...

Kiwanis Food truck
Hot Dog or Drink \$1.00

Kiwanis Pancake Breakfast
July 1 - 8:00 am - 10:30 am

Canada Day Ceremony
July 1 - 12:00 pm - 12:30 pm

Fun at the Harbour for the Whole Family!
Fun Time Face Painting & Family Games

Indigenous Display
(Teachings, crafts, entertainment & Raffle)
July 1 - 1:00 pm

Save the Lake Fish Fry Fundraiser
July 3 - 11:00 am - 3:00 pm
Gimli Yacht Club

Sunset Indigenous Ceremony
July 1 - 9:00 pm
Shores of Lake Winnipeg near the Harbour Stage

Acro Yoga Manitoba Display
Hula at the Harbour
Kung Fu - Demo by Kali
July 2 - 1:00 pm - 3:00 pm

Gimli's Got Talent
July 1 - 1:00 pm - 3:00

Girls & Boys Bike draw (entry ticket \$1.00)
50/50 Draw (tickets \$2.00 or 3 for \$5.00)

Gimli Art Club
(Help Create Giant Mural) - 12:30 pm
Free Canada Day Cake & Cookies!
(while supplies last)

Youth Evening Summer Activities



Teulon Rockwood Arena

5 - 8pm

Age 11-17

Cost \$50 for 5 week session or \$12/day



Crafty Wednesday's

July 13 Slime Night
July 20 Rock Painting
July 27 Create your own Pinata
August 3 Tie-dye & Pizza night
August 10 Cupcake decorating & Games

Additional costs

\$30 for tie-dye night (includes dye kit, t-shirt, rubber bands, gloves)
\$10 Cupcake decorating

Sporty Thursday's

July 14 Floorball
July 21 Open arena night
July 28 Pickleball
August 4 Open Arena Night
August 11 Dodgeball & Basketball

Additional costs

\$5 Make your own wraps July 21st
\$5 Pizza Night August 11th

NEW Seniors Stepping Out

Summer Activities Ages 55+

July 11 - August 18

Cost \$60/ session includes all activities

Mondays

10am -1pm

Green Acres Park

July 11 Slow pitch or Booterball
July 18 Nature Walk & Bannock
July 25 Music & Karaoke
August 8 Large board games
August 15 Golf, Bocce Ball, Frisssknock

Grandchildren welcome to join for FREE

6pm-9pm

Teulon Rockwood Arena
 Pickleball, badminton & tennis

Tuesdays

Teulon Rockwood Centennial Centre
10 - 1 or 6 - 9

Floor Shuffleboard & Floor Curling
PLUS

What's Cooking in the Kitchen!

July 19 Muffin Making
July 26 Perogy Making
August 2 Smoothies & Protein Bars
August 9 Crepe Making
August 16 Cookies & Tart

Thursdays

Teulon Rockwood Arena
10 - 1 or 6 - 9

Tournament-style cribbage
No partner necessary

To register or for details

Visit www.greenacresartcentre.ca

Email Amanda at gaacevents@mymts.net

Phone 204 886 3192

Register for Camps, Dance in Park, Come Dance with Me

www.greenacresartcentre.ca or email gaac@mymts.net

Musical Theatre Camp

Arthur & Miss Elena

Ages 7 - 17 No experience necessary
 Not mandatory to perform, behind the scenes jobs.

Register for 1 week of camp

1st Camp \$150.00 2nd Camp \$100.00

Live Performance

Film

July 18 - 22

Aug 2 - 5

July 25 - 29

Aug 8 - 12

Starting July 14

Dance in the Park

for 6 Thursdays

for ages 5+ Cost - \$60.00

Come Dance with Me and
 Imagine, Inspire & Create

FREE Parent & child programs
funded by Family Connections

Field of Dreams



EXPRESS PHOTO SUBMITTED

J&M Industries started installing the dugouts and fencing in Lundar on June 20. Volunteers are optimistic that everything will be finished for the beginning of next season.

> URBAN GARDEN, FROM PG. 6

in the heart of the Inkster neighbourhood. Phase 1 of the project transforms a vacant field into a functioning urban community farm. Food grown will be used in NorWest's community meal programs and distributed to volunteers, seniors and low-income community members.

"The community farm is such an important project for NorWest, and wouldn't be possible without the support from Red River Co-op. We're so excited to watch the site transform into a beautiful space for community that will be producing food for years to come," said Stephanie Fulford, Garden and Food Skills Programmer, NorWest Co-op Community Health.

Since 2017, Red River Co-op has directed \$436,400 to fund local Community Spaces projects. The Co-op Community Spaces program was developed to help protect, beautify and improve spaces leading to healthier communities.

What's *your* story?

We want to hear from you.

The Express Weekly News connects people through stories to build stronger communities.

Do you know someone who has a unique hobby? Will be recognized by a local organization for volunteer service?

A teacher that goes above and beyond? A hometown hero? A sports star? A business celebrating a milestone or expansion? A senior celebrating their 100th birthday?

A young entrepreneur starting out?

Please share your story ideas at
news@expressweeklynews.ca or Phone 204-467-5836

THE **EXPRESS**
 WEEKLY NEWS

Soccer champions



EXPRESS PHOTO SUBMITTED

Arborg won the Gimli U12 June 18-19 soccer tournament after defeating Winnipeg Beach, the Gimli A team, Gimli C, Gimli D and Gimli B before facing off against Morweena where it took overtime to win 3-2. Arborg had a record of 40 goals for and 2 against over the weekend in plus 38 degrees C. temperatures. Pictured, back row, left to right: Mike Shachtay (coach), Ty Shachtay, Hayden Plett, Ryan Plett, Mason Bardarson, Adrian Plett (coach); front row Theron Sigurdson, Landon Timchishen, Carter Beuhmann, Kolby Koomen, Locklin Pearce and Lucas Caldeira.

Gimli celebrates National Indigenous Day



EXPRESS PHOTO BY RAYME THOMSON

Gimli's first ever National Indigenous Peoples Day took place on June 21 at the Gimli Pavilion. The day provides an opportunity for people to learn about the contributions of First Nations, Métis and Inuit people to Canada, understand their experiences and history, and celebrate their culture.



ALL COVID RULES APPLY
Lic #318

Fraserwood Hall

Friday Nights 7:15 PM
July 1, 2022

Breakopens 50/50

5 Share The Wealth Games
15 Regular Games @ \$60.00
(reduced games with low attendance)

JACKPOT	\$2,875.00
FIRST SPECIAL	\$1,636.00 +
BONANZA	\$14,318.00 +
LUCKY 7	\$650.00 +
STAR	\$1,968.00 +
WEEHOUSE	\$486.00 +
HOUDINI	\$0.00 +
LOONIE POT	\$0.00 +

(Estimated amounts at time of publication)



"CHASE THE ACE"
Lic # LGA 318-RF
Tickets sold 5:00 - 7:00 PM
with draw to follow

\$2.00/ticket Current Accumulator - \$3,439.00+

CANTEEN - OPENS @ 5PM
Perogies, hamburgers, hotdogs, desserts, etc

INFORMATION - 204-642-9392 or
204-643-5541 or www.fraserwoodhall.com



Hall Rental & Commercial Kitchen Rentals
Please contact Peter at 204-955-5415

DREAM. GROW. THRIVE.



MEET YOUR MANITOBA TEAM

Whether you're a startup looking for \$10,000 or a publicly traded company needing \$150 million, FCC can help. With a growing portfolio in Manitoba, and a Canada-wide network of financing and industry experts, we have the experience and knowledge to help you take the next step on your path to success. As the only lender 100% invested in Canadian agriculture and food, we've supported businesses like yours for over 60 years.

Give us a call and let's get started



Morgan Cuvelier
Senior Relationship Manager
Commercial Financing
Winnipeg Office
morgan.cuvelier@fcc.ca
204-441-0844



Bonnie Bain
Senior Relationship Manager
Corporate and Senior Accounts
Winnipeg Office
bonnie.bain@fcc.ca
204-771-4538



Genni Hibbert
Relationship Manager
Commercial Financing
Winnipeg Office
genni.hibbert@fcc.ca
431-335-0457

fcc.ca



GIMLI CANADA DAY CELEBRATIONS! July 1 to July 3

Sunset Indigenous Ceremony

July 1 - 9:00 P.M.
Shores of Lake Winnipeg near
Harbour Stage
Nibi Ikwewag Drum Group,
Teachings, Tobacco Offerings and
Smudging

Live Entertainment

July 1 - 7pm - 11pm
The Main Street Exiles
July 2 - 8 pm - 11 pm
The Incredibly Hip
Gimli Harbour Stage

Fireworks!

July 1 - 11:00 pm
Gimli Harbour

Acro Yoga Manitoba Display

Hula at the Harbour
Kung Fu – Demo by Kali
July 2 - 1:00 pm – 3:00 pm
Gimli Harbour Stage

Save the Lake Fish Fry Fundraiser

July 3 - 11:00 am – 3:00 pm
Gimli Yacht Club

Made in Manitoba Vendor Marketplace

July 1 - 12:00 - 3:00 pm
Gimli Harbour

July 1st Canada Day Parade!

Starts at 11:00 am!
To Participate call
Kim 204-642-1474

Activities at Gimli Harbour July 1st

Kiwanis Pancake Breakfast

8:00 am - 10:30 am
Adults \$8 10 Years & under \$5

Indigenous Display

Starts 1:00 pm
*Teachings, Crafts,
Entertainment & Raffle

Canada Day Ceremony

12:00 pm - 12:30 pm

Gimli's Got Talent

1:00 pm to 3:00 pm

Fun at the Harbour for the Whole Family!

*Games *Hot Dog or Drink \$1
*50/50 Draw
*Birthday Cake & Cookies!

Gimli Art Club

- Help create Giant Mural starts
at 12:30 p.m.

Girls & Boys Bike Draw

Entry ticket \$1

Thank You to All Gimli Canada Day Sponsors!

- RM of Gimli • Kiwanis Club of Gimli • Gimli Ice Festival
- Gimli Art Club • Gimli Fire & Rescue • Access Credit Union
- Canadian Heritage • Betty Anne Schwartz • Sobeys

HAPPY
Canada Day

JAMES BEZAN MP

SELKIRK—INTERLAKE—EASTMAN

OFFICE@JAMESBEZAN.COM
JAMESBEZAN.COM • 204-785-6151

KC TIMBER MART
204-642-5111
Gimli, MB

204-278-3377

FISHER
Rural Municipality of
Phone 204-372-6393

204-642-5519
5 7th Ave, Gimli
Red Seal Mechanic Nic Turkewich

ARBORG
Town of Arborg
Mayor, Council
and Staff

CAST OFF
WINERY + BREWING SUPPLIES
Gimli, Manitoba
We make great wine.
204-642-3779

Lundar MANITOBA
The Rural Municipality of Coldwell
Lundar, Manitoba R0C 1Y0
Phone: (204) 762-5421 Fax: (204) 762-5177

**Rural Municipality
of Gimli
Council and Staff**

CO-OP
Moosehorn
1 Main St,
Moosehorn
Phone: (204) 768-2770
www.moosehornco-op.crs

329 River Road,
P.O. Box 70, Arborg,
MB R0C 0A0
1-204-376-2391

NADA DAY



Moosehorn Community Club

Friday, July 1st

Games for all ages

Canteen (hot dogs, hamburgers, taco salad, popcorn, mini donuts & cotton candy)

10:00am. Foot races start (ages 0-100)

11:00am. Indoor & outdoor games (baseball fields & community hall)

Fireworks at dark

Riverton

July 1, 2022 • Centennial Park

9:00 am - 12:00 Riverton Elks Kid's Fishing Derby 15 & Under
Prizes at 1:00 pm

9:00 am - 4:00 pm Riverton Transportation Heritage will be open for tours

11:00 am - 3:00 pm Riverton Fire Department BBQ

1:00 pm - 3:00 pm RBPRC Kid's Games/Cake & Coffee

Disc Toss, Bean Bag Toss, Ring Toss and Face Painting

3:30 pm Parade Staging Area RCI

Riverton Co-op is sponsoring kids decorating contest. Prizes will be provided to the best decorated bikes. Come with your bikes decorated for the parade and win a prize. Each kid will get a treat bag that participates in the bike decorating contest. Parade starts at RCI and ends at Centennial Park.

Dusk Fireworks Riverton Collegiate Grounds

Sponsored by Riverton & District Friendship Centre, Municipality of Bifrost-Riverton, Riverton Elks and Riverton-Bifrost Parks & Recreation Commission.

Steep Rock Beach Park

Saturday, July 2nd -

Everyone welcome

6:00pm. Cold plate with ham and an assortment of salads for \$15 per person.

7:00pm Band

11:00 pm. Fireworks

Winnipeg Beach Bandstand

Friday, July 1st

7:00pm Elvis (Adam T.)

Saturday, July 2nd

7:00pm. Coverband

THE EXPRESS
WEEKLY NEWS
204-467-5836

NORSEMAN AUCTION
204-651-0008

Happy Canada Day!

Derek Johnson

MLA for Interlake-Gimli

interlakegimlimla@gmail.com

Gimli 204-641-8525 | Arborg 204-376-3401

Noventis
CREDIT UNION

Hi! We're Noventis.

And, as of July 1st,
we will be
Access Credit Union.

To learn more about
Access Credit Union
and how they support
our communities,
visit **accesscu.ca.**

ACCESS
CREDIT UNION

Moderate weekend winds give Gimli and some subdivisions a soaking

By Patricia Barrett

The RM of Gimli experienced flash flooding last weekend when moderately high winds whipped up Lake Winnipeg, whose level is already elevated after a snowy winter, extraordinarily wet spring and heavy rain events.

The lake washed over Gimli's harbour dock and crept up to the harbourmaster office, encircled the frog pond by the Gimli Art Club and flooded Goldfield. Residential subdivisions such as Willow Island and Siglavik also saw high water. In Hnau-sa, about 34 kilometres north of Gimli in the Municipality of Bifrost, the lake swamped the Hnau-sa dock.

Gimli Mayor Lynn Greenberg said the winds whipped up the lake, preventing a town drain from emptying into the lake. That led to water inundating some streets.

"The lake was high the last month or so, but it's the winds that caused this. When the winds come from the northeast, it sends all the water into Gimli," said Greenberg Sunday morning. "It really got bad overnight on Saturday (June 25)."

Greenberg said some residents on Willow Island, just south of Gimli, left their homes as the water rose.

"Some residents on Willow Island have left voluntarily, but there hasn't been a formal evacuation notice from EMO [the provincial Emergency Measures Organization]," he said. "We're keeping an eye on Willow Island Road today. Some vehicles such as half-tons and SUVs are getting through, but small cars are having a problem if they drive too fast and flood their engines."

A major drain running from town into the lake, just behind the Gimli library, backed up when the water rose and flooded streets west of the lake, such as Goldfield.

"Once the lake gets too high, the water can't drain," said the mayor. "We put big sandbags by the drain and pumped the water over them into the

lake so that the water can flow from the streets."

The municipality's emergency measures co-ordinator Don Emes said the lake rose four feet in the space of a few hours even though the winds were moderate. And it's something that has happened "many times" in the past when there's a high lake and a wind event.

"The wind picked up late last night after midnight, and the lake was just over 719 feet at around 5:30 or 6 a.m. today [Sunday]. That means the lake was well over four feet higher than normal. It happened within only a few hours of reasonably high winds — not 80- or 90-kilometre-per-hour winds but more like 30," said Emes. "People have to realize that the lake is higher now than it has been since 2005 or 2010. When we have this kind of volume of water, it doesn't take very much wind from the right direction — the northeast — to start wreaking havoc on the west shore of Lake Winnipeg."

The excessive snow, runoff and heavy rain that hit the province last winter and this spring and summer drained into Lake Winnipeg, he said. And water from Lake Manitoba and Lake Winnipegosis — as well as water "all the way from the Rocky Mountains in the west and Thunder Bay in the east" — also flows into Lake Winnipeg.

"And it's still going to keep coming. The latest forecast, we've been informed, is that maybe by the end of July or the end of August it will finally crest," said Emes. "This is the weather cycle we're in right now. Mother Nature is driving the bus and we're just along for the ride."

Residents or cottagers in low-lying areas along the lake or in areas "susceptible to wind setup," such as Siglavik and Willow Island, are aware of what happens when the lake gets high, he said. And they have to decide, based on their own comfort level, whether to stay or leave.



EXPRESS PHOTO BY MATTHIEU MEIER

An aerial view taken Sunday night of Willow Island Road, far left, shows some of the road covered by water, as well as Willow Island and the Odin Green subdivision on the right.

"There is no mandatory or voluntary evacuation notice issued for the RM of Gimli, or Town of Winnipeg Beach or RM of Armstrong as of today, June 26, at 2:30 p.m. That's not to say it can't change. Maybe by this time tomorrow (Monday) it could change," said Emes. "People are being told to determine their own comfort level. If they want to, they can leave."

The sun was shining Sunday while Emes did the rounds, checking the situation in the town of Gimli and on Willow Island Road. The town is "basically back to normal," he said. Goldfield is open, the water is drained and the barricades are down after the town's public works set up a tractor pump — which is still on standby — near the library to pump the water back into the lake. And Willow Island Road is driveable.

"I'm driving down Willow Island Road right now, and I have no prob-

lem seeing where the road is. The majority of the road is out of the water. There are a couple of spots with water over the road," he said.



Brian Jonasson took a photo of a very brave driver parked on an inundated Hnau-sa Dock last Sunday.



Gimli resident Glen Martin captured a very wet Gimli harbour dock and harbourmaster office.



Patricia Skoropet found the Gimli "frog pond" park near the harbour swimming in lake water and the entrance to Gimli Harbour, including its new loading ramp, completely covered.

sports & recreation

INSIDE > OUTSIDE > UPSIDE DOWN

Lundar participates at 15U regional tournament

Submitted

The Stonewall Regional Tournament Committee asked Lundar to participate in three 15U exhibition games over the weekend.

The coaches knew it was an excellent opportunity for 15U baseball players to play some games. Due to the overwhelmingly wet spring, only three official 15U interlake league games were played throughout the season.

Lundar was the only area that could field a team for the regionals from all the towns that registered to play in the Interlake this season.

Lundar wishes to thank the coaches from Warren who put together a team of Interlake players to play them in the exhibition games. Lundar will be participating in the 15U A provincial championships in Swan River from July 8 to 10.



EXPRESS PHOTO BY IAN PROVEN

The Lundar Brewers won gold in the 15U A Mervin Farmer Regional Championship this past weekend. Lundar will represent the Interlake at the upcoming provincials. Pictured front row, left to right: Konnor Law, Riley Johnson, Bernie Cronje, Erik Johnson and Jersi Godfrey; middle row, left to right: Brad Drews (coach), Gavin Sweetland, Maculla McKay, Austin Hickman, Caitlan Nickel, Blaine Christensen, Stathen Stuart and Ryan Godfrey (coach); back row: Draven Meisner and Torger Bjornson.

Impact play to 2-2 draw

Staff

The Interlake Impact played to a 2-2 draw with the YFC Saints in Manitoba Major Soccer League 4th Division action last Thursday at Kinver Park in Winnipeg.

Impact goals were scored by Everett Fast and Kyle Reenders.

Juliano Tasso, with a pair of goals,

replied for the Saints.

Interlake, now 3-0-1, played Richmond United on Monday but no score was available at press time.

The Impact will travel to Portage la Prairie to take on Central Plains FC on Wednesday. Game time is 7:30 p.m.

MJHL releases regular-season schedule

Staff

The Manitoba Junior Hockey League announced the 2022-23 regular-season schedule will begin on Sept. 16.

Opening weekend will feature divisional matchups involving all 13 teams.

The expansion franchise Niverville Nighthawks will play in their inaugural MJHL regular-season game on

Sept. 16 in Steinbach before returning to the ice the following night for their home opener.

The MJHL will continue with two divisions for the 2022-23 season featuring a West Division (six teams) and East Division (seven teams).

The Selkirk Steelers will play in the East Division along with the Portage Terriers, Niverville Nighthawks,

Steinbach Pistons, Winkler Flyers, Winnipeg Blues and the Winnipeg Freeze.

Selkirk will host Portage on Sept. 16 (7:30 p.m.) and then the Steelers will visit the Terriers Sept. 18 (6:30 p.m.).

The West Division will consist of the Dauphin Kings, Neepawa Titans, OCN Blizzard, Swan Valley Stampeders, Waywayseecappo Wolverines

and the Virden Oil Capitals.

Each team will play a 58-game schedule that concludes on March 19.

The 2023 MJHL playoffs will begin March 24, starting the road to the 2023 Centennial Cup presented by Tim Hortons to be held in Portage la Prairie in May.

REFEREE IN CHIEF WANTED

Stonewall Minor Hockey is seeking applications for the position of Referee in Chief

The duties of the position are as follows:

The Referee-in-Chief shall:

- Co-ordinate local referee clinics
- Facilitate referee support and development through mentoring, mini-clinics, coaching or evaluations.
- Where SMHRA is mandated to provide one or more such officials, either directly through the Referee-in-Chief or through those persons delegated this responsibility by the Referee-in-Chief
- Ensure that the appropriate fees, including mileage where applicable, are paid to the officials
- Handle all issues arising with respect to officiating and report on the outcome of such matters to the Board.

A stipend of \$4800 shall be paid to the Referee in Chief for the 2022/2023 hockey season.

Please send your application in writing to: info@smhra.ca (Closing Date: July 11th)



Interlake splits doubleheader

Staff

The Interlake Blue Jays split a doubleheader with the Carillon Sultans in Manitoba Junior Baseball League action Sunday at Quarry Park.

Interlake lost the first game 17-3 but won the second one 2-0.

Last Wednesday, Interlake was shut out 10-0 by Winnipeg South.

Interlake, now 2-12, will host the St. Boniface Legionaires on Wednesday (7 p.m.) and Winnipeg South in a doubleheader Sunday. Games

start at 1 p.m. and 4 p.m..

In Winnipeg Senior Baseball League action, the Stonewall Blue Jays crushed the North Winnipeg Pirates 12-2 last Wednesday.

Stonewall, now 6-1 and in first place, hosted the second-place Elmwood Giants this past Tuesday but no score was available at press time.

The Blue Jays will visit the Carillon Sultans on Thursday at 7 p.m. at AD Penner Park.

get inspired

> MEAL IDEAS



Watermelon Ice Cream Bars

Servings: 8
Watermelon Curd:
 3/4 cup watermelon juice
 2 tablespoons lime juice
 1/2 cup honey
 1 pinch salt
 3 eggs, lightly beaten
 1/2 cup butter (1 stick), cut into small cubes
Crust:
 8 graham crackers, crushed
 2 tablespoons honey
 1 pinch salt
 4 tablespoons butter, melted and cooled
 basil leaves, for garnish
Whipped Cream:
 1 cup heavy whipping cream
 To make watermelon curd: In medium,

heavy-bottomed saucepan, combine watermelon juice, lime juice, honey and salt. Stir to combine then add eggs.

Place pan over medium heat and cook, adding cubed butter to pan and stirring constantly, until mixture thickens and coats back of wooden spoon. Immediately remove from heat and carefully pour through fine mesh sieve. Cool completely in refrigerator.

To make crust: Preheat oven to 350 F. In food processor, pulse graham crackers until rough crumbs form. Add honey, salt and melted butter; pulse until mixture resembles wet sand.

Line 8-by-8-inch pan with parchment paper then press graham cracker mixture into bottom of pan in even layer. Bake crust about 10 minutes, or until just beginning to brown. Allow crust to cool completely.



Watermelon Gelato

according to manufacturer's instructions.

To make whipped cream: When crust and curd are completely cooled, in large bowl, whip cream until stiff peaks form.

Gently push cream to one side of bowl and pour in watermelon curd. Using spatula, gently fold cream and watermelon curd together until no streaks are visible.

Pour creamy watermelon mixture over graham cracker crust. Freeze dessert completely, 4-6 hours or overnight.

When ready to serve, loosen sides with small spatula or butter knife. Turn out onto cutting board and use large spatula to flip so graham cracker crust is on bottom. Cut into eight bars and top each with basil leaf.

Servings: 8
 2 cups pureed watermelon
 1/2 cup sugar
 1 1/2 tablespoons cornstarch
 1 cup fat-free half-and-half
 3 tablespoons lemon juice
 1/2 cup whipping cream
 In blender, blend watermelon, sugar, cornstarch, half-and-half, lemon juice and whipping cream until smooth.
 Using ice cream maker, process gelato



Easy Kona Pineapple Chicken Kebabs

1 package Perdue Fresh Cuts Diced Chicken Breast
 1/2 fresh pineapple, cut into 16 chunks
 1 large red bell pepper, seeded and cut into 16 (1-inch) chunks
 4 metal skewers or 8 wooden skewers (12 inches) soaked in water 30 minutes

In bowl, whisk pineapple juice, vegetable oil, lime juice and zest, sugar, ginger and red pepper flakes until sugar dissolves. Add diced chicken breast, cover and marinate in refrigerator 30 minutes.

Thread alternating pieces of chicken, pineapple and red bell pepper onto

Prep time: 45 minutes
 Cook time: 15 minutes
 Servings: 4
 1 can (6 ounces) pineapple juice
 2 tablespoons vegetable oil
 1 lime, zest and juice only
 1 tablespoon sugar
 1 piece (1 inch) fresh ginger, grated
 1/2 teaspoon red pepper flakes

There's a nature preserve in Stonewall?

By Karl Daher, REACT

Stonewall is fortunate to have its own nature preserve in the form of the Ruby Roe Tall Grass Prairie (RRTGP), located just west of the hospital. What is a tall grass prairie? From a distance it may look to many like an overgrown field, but at closer range you will notice some uncommon plants that set it apart from other places; among them are Big Bluestem (Manitoba's provincial grass), New England Aster, Blazing Star, Prairie Clover and Western Prairie Fringed Orchid.

So why preserve an area like this? Tall grass prairie is the most biologically diverse and productive grassland in North America. Genetic information contained in these rare plant communities is used by researchers to develop new crops and pharmaceuticals. Nearly half of all of the medicines we use today are derived from a natural source. Perhaps a cure for an untreatable disease today may be found in a protected patch of big bluestem? Tall grass prairie is also a refuge for a variety of birds and insects. The Poweshiek Skipperling is an example of a butterfly that relies on the existence of a tall grass prairie to survive. As a result of the loss of habitat, it is now an endangered species.

What is the best way to maintain a tall grass prairie? While it may sound counterintuitive to some, a partial or near complete controlled burn of the prairie is the best tool. Native species have adapted over thousands of years to store energy in their roots, whereas most non-native species store energy above ground. A controlled burn therefore reduces non-native species and allows the native species to return and thrive. We hope to conduct another controlled burn of the RRTGP this fall.

As one of the groups responsible for its upkeep, REACT was fortunate to recently get some matching funding from the province to help us maintain and improve the RRTGP for both the land and its visitors. As we are in the breeding grounds of purple martins, we have acquired a new "condo" to increase the population of this species. In addition to maintenance of existing infrastructure, we've added a bench and signage at the south entrance to the RRTGP to enhance the experience for visitors.

If you haven't visited the RRTGP before, we encourage you to drop by this summer and enjoy Stonewall's small piece of this rich prairie heritage.



Roasted Chicken and Zucchini Tostadas

1/2 teaspoon ground cumin
 1/8 teaspoon ground cayenne pepper
 1 cup (4 ounces) shredded Monterey Jack cheese

Heat oven to broil.

Line large baking sheet or 18-by-13-by-1-inch baking pan with foil. Arrange tortillas in single layer on pan. Lightly spray tortillas with nonstick cooking spray. Broil about 5 inches from heat 4-6 minutes, or until beginning to brown on one side. Remove from broiler. Carefully turn tortillas over.

In medium bowl, stir yogurt, 1 teaspoon lime juice and garlic powder. Set aside. In another bowl, toss chicken, tomato, zucchini, remaining lime juice, olive oil, cumin and cayenne pepper.

Spread yogurt mixture on unbrowned sides of tortillas. Top with chicken mixture. Sprinkle with cheese. Broil about 5 inches from heat 2-3 minutes, or until hot and cheese melts. Serve immediately.

Recipe courtesy of Marcia Stanley, MS, RDN, Culinary Dietitian, on behalf of Milk Means More

Total time: 25 minutes

Servings: 4

12 street taco-size corn tortillas
 nonstick cooking spray
 1/2 cup plain Greek yogurt (2% or 5%)
 3 teaspoons lime juice, divided
 1/4 teaspoon garlic powder
 1 1/2 cups shredded or chopped rotisserie-roasted chicken breast
 1/2 cup seeded and chopped tomato
 1/2 cup chopped zucchini
 2 teaspoons olive oil

skewers. Discard remaining marinade.

Heat lightly greased grill or grill pan to medium-high heat. Grill kebabs 10-12 minutes, turning every 3-4 minutes until chicken feels firm to touch and a meat thermometer inserted in the center reaches 165 F.

Remove kebabs from grill, rest 2-3

minutes and serve.

Tip: If using wooden skewers, soak in water 30 minutes to keep skewers from burning on grill. If using metal skewers, remember chicken will cook faster because metal will conduct heat and cook chicken cubes from inside along with grill heat cooking chicken from outside.

Classifieds

THE EXPRESS
WEEKLY NEWS

Book Your Classified Ad Today - Call 467-5836 or Email classifieds@expressweeklynews.ca

SCRAP METAL

BUYING SCRAP METAL, CARS, TRACTORS, COMBINES, FARM SCRAP, ANY METAL MATERIAL, ANY FARM MACHINERY. PH LONNIE AT 204-886-3407 LVE. MESSAGE OR CELL AT 204-861-2031.

Buyer for all farmyard scrap, machinery and autos. No item too large! Best prices paid, cash in hand. Phone Alf at 204-461-1649.

CAMPERS/TRAILERS

2006 Forest River, Wildwood LA, low miles, tow hitch. Sleeps 6. 1 slide out. Fridge, stove, microwave, shower, toilet, awning. Works on hydro or propane. Asking \$18,000. For more info call Bob at 204-642-2787.

CAMPERS/TRAILERS

5th wheel & truck - EUC 30.5 Topaz 5th wheel, built in Manitoba, new tires & battery 2022, new hot water tank 2016, cargo pass through tray, winter package, one slide out, automatic awning, 3 burner stove with oven, collapsible shelf for extra counter space, 4 chairs & table extension, TV, hide-a-bed, built-in laundry cabinet; 2006 GMC Sierra 2500 HD SLE crew cab truck, safetied with \$5000 work done, new tires March 2022, new battery November 2021, 197,483 km. \$40,000 for both, \$22,000 for 5th wheel. Call 204-461-3374.

Please support our advertisers
SHOP LOCAL

PROPERTY MANAGEMENT

Do you own rental property in Winnipeg? Are you tired of dealing with long term renters and the mess they can leave? We can provide you with a different option to earn a rental income. Pawluk Realty 204-890-8141.

The Express Weekly News Classified booking deadline is Monday at 4 p.m. prior to Thursday's publication Please Call 204-467-5836

COMMERCIAL SPACE FOR RENT

Buildings and yard, 310x48' zipperlock steel building with 4" urethane insulation; 30x60' shop, 600 V. Hydro in yard, 1 mile north and 1 mile east of Teulon. Interlake Potatoes Farms, 204-886-2676.

GARAGE SALES

Multiple family garage sales Fraserwood, Mb., July 1 & 2. 1 and 2 miles north of Fraserwood right on #7 Hwy. Friday from 3 to 8 p.m. and Saturday from 9 to 3 p.m.

COMPUTER PROBLEMS

Computer problems - call Darrell in Gimli. Rates starting at \$47.50 residential or \$57.50 business, plus mileage outside of Gimli. Phone 204-641-2910.

HELP WANTED

Super 7 Service in Teulon is looking for F/T & P/T staff. Email resume to 7service@mts.net or drop off at store Attn: Dave or Ann.

HELP WANTED

Federated Co-operatives Limited. Class 1A & 3A Propane Drivers wanted: Winnipeg, Brandon & Carman. Apply at www.fcl.crs

WATER TREATMENT

Water softeners. All sizes. 5 stage reverse osmosis systems, \$268. E-coli ultraviolet systems. Greensand iron/odour/manganese removal filters. 10" & 20" Polyspun. String wound. Carbon replacement water filters. Delivery avail. All Seasons Furnishings 204-661-8581.

WANTED

Firearms wanted. Looking for all unwanted firearms. Fully licensed for both non-restricted and restricted. Anywhere from individual items to estates. Cash buyer, paying top dollar. Please call or text Adam at 204-795-2850.

RURAL MUNICIPALITY OF ARMSTRONG

REQUEST FOR TENDER

2022 ROADSIDE GRASS-CUTTING SERVICES



The Rural Municipality of Armstrong invites tenders for 2022 Roadside Grass Cutting along municipal roads.

Please contact the office at the address or phone number below, or visit the municipal website www.rmofarmstrong.com to obtain the mandatory tender document.

Roads to be cut are all throughout the municipality Wards 1 to 5 approximately 588 miles (1,176 lane miles).

All tenders are to be submitted by sealed envelope to the RM of Armstrong marked "Roadside Grass Cutting" by Thursday, July 14, 2022 before 4:00 pm.

Contractor to supply own equipment and fuel.

Lowest or any quote not necessarily accepted.

Corlie Larsen, CAO
RM of Armstrong
Lot 55 Highway 17
Box 69, Inwood, MB R0C 1P0
Phone: 204-278-3377



Notice of Nominations Village of Dunnottar ELECTION RESULTS

At the close of Nominations, June 16th, 2022, the following candidates were declared elected by acclamation:

For Mayor: Gamble, Richard (Rick)
For Council: Campbell, Bob
Howard, Rosalyn
Kotowich, James (Jim)
Magnusson, Kathryn (Kathy)

Effective noon, July 23rd, 2022

David Lobban, Senior Election Official
Village of Dunnottar
204-389-4980 Cell: 204-918-7563
Email: dunnvoting2@gmail.com
Dated at the Village of Dunnottar on June 26, 2022



NOTICE OF REGISTRATION OF PRESPECTIVE CANDIDATE FOR GENERAL MUNICIPAL ELECTION

R.M. of Grahamdale

Please be advised that a general municipal election will be held on October 26, 2022.

Prospective municipal election candidates must register with the Senior Election Official (SEO) during the registration period before they may begin to accept contributions, incur expenses, fundraise or borrow money for their campaign.

NOTICE IS HEREBY GIVEN that I will be receiving candidate registrations:

For the office of head of council:
Between May 1, 2022 and September 20, 2022

For the office of councillor:
Between June 30, 2022 and September 20, 2022

at the R.M. of Grahamdale office, 23 Government Rd., Moosehorn, MB during the regular hours of business.

To obtain a registration form contact the S.E.O. at the telephone number listed below.

SEO name: Sandra Falk
SEO contact telephone number: (204) 768-2858
SEO fax number: (204) 768-3374
Email: seo@grahamdale.ca

Dated at Moosehorn, MB this 27th day of June 2022.
Sandra Falk
Senior Election Official, RM of Grahamdale



Box 280, Fisher Branch, MB, R0C 0Z0
Tel: 204-372-6393, Fax: 204-372-8470

SUMMER STUDENT EMPLOYMENT OPPORTUNITY

Office Assistant

(Funded by Manitoba Metis Federation)
July 11 to August 26, 2022 (Eight weeks)

The Rural Municipality of Fisher is accepting applications for the above position:

Duties:

This is a seasonal position to help assist office staff. Duties will include answering telephones, filing, dealing with ratepayers and other duties as assigned.

Requirements:

Must be a student between the ages of 16 and 30 who attended school full-time during the preceding year and intend to return to school on a full-time basis in the following academic year (part-time and distance education students do not qualify).

Must be Metis, Non-status or Inuit.

Must be able to work with minimal supervision.

Please submit applications by 9:00 a.m. Wednesday, July 6, 2022 to:

RM of Fisher
Box 280,
Fisher Branch, MB R0C 0Z0
Fax: 204-372-8470
Email: fishercao@mymts.net

EMPLOYMENT OPPORTUNITY



Sun Gro Horticulture is currently accepting applications for full time Maintenance Mechanic at the Ramsay Pt. Bog facility.

RESPONSIBILITIES:

- Perform standardized quality control checks
- Use manual and powered hand tools
- Perform a variety of housekeeping duties
- General maintenance of equipment, Oil changes Bearing changes / trouble shooting tractors when required
- Hands on working with tools

QUALIFICATIONS:

- Welder experience
- Positive, safety-conscious attitude
- Able to work with others in a team
- Punctual and willing to work
- Must be in good physical condition, able to lift 50 lbs.
- Able to climb stairs, ladders, and rough terrain

We offer a comprehensive benefits package and competitive compensation based on experience and knowledge.

Please submit resumes no later than July 1, 2022, to:

Sun Gro Horticulture Canada
Sun Gro Road, Riverton, MB
Email: brad.keller@sungro.com
Contact: Brad Keller - 204-641-4256

Thank you for your interest, however, only those selected for an interview will be contacted.

Classifieds

Book Your
Classified Ad Today
- Call 467-5836

THE **EXPRESS**
WEEKLY NEWS



Rural Municipality of
FISHER

Box 280, Fisher Branch, MB, R0C 0Z0
Tel: 204-372-6393, Fax: 204-372-8470

NOTICE OF TENDER GRASS CUTTING

The Rural Municipality of Fisher is inviting tenders for grass cutting at:

**Interlake Forestry Centre
in Hodgson**

Please state price per cut in the tender.

- Applicant is to supply own equipment and fuel.
- Applicant to be 18 years of age or over.
- Lowest or any tender not necessarily accepted.

Submit sealed envelope marked "**Tender Grass Cutting-Forestry Centre**" to:

Rural Municipality of Fisher
Box 280
Fisher Branch, MB R0C 0Z0
Email: fishercao@mymts.net

Deadline for tenders is **9:00 a.m. Wednesday, July 6, 2022.**

For further information, call the RM of Fisher office at 204-372-6393.

Maps provided upon request.

EMPLOYMENT OPPORTUNITY

Direct Support Workers

**To provide Assistance
To Adults living with a
Developmental Disability
In the Community**

We currently have openings for full-time and part-time Direct Support Workers at our group homes in Arborg. If you are a people person with a compassionate heart and a desire to be of service then this might be just the rewarding work experience you are looking for. Training will be provided on the job, no formal education necessary. Experience providing care to others in a variety of settings is an asset, but not a requirement.

This position is about relationship building, and providing support to our individuals. Working as a team member, your tasks will be varied, including personal care, community outings and assisting with all activities of daily living, as needed. Other duties include household upkeep, daily cooking, and record keeping tasks.

We offer full benefits and pension and a flexible schedule with options for day, evening, night or weekend shifts. If hired you will be asked to pass criminal record and child/abuse registry checks.

Please apply in writing to:
Executive Director
Riverdale Place Homes Inc.
Box 968, Arborg MB R0C 0A0

Or email: kfinnson_rph@outlook.com

Application Deadline: July 12 2022

For more info contact: Kathy Finnson, Exec. Director 204-376-2940, ext. 1

FIND THE RIGHT PERSON FOR THE POSITION with an EMPLOYMENT/ CAREERS AD in

THE **EXPRESS**
WEEKLY NEWS

Call 204-467-5836

RECYCLING NOTICE FOR JULY/2022

Riverdale Place Workshop Inc. **will not be picking up recycling on the below mentioned dates** due to the small group of workers available.

Mon. July 4/2022 at Riverton business places
Tues. July 5 Arborg curbside pickup
Weds. July 6 at Arborg business places
Thurs. July 7 at Riverton curbside pickup

Mon. July 18 at Riverton business places
Tues. July 19 at Arborg curbside pickup
Weds. July 20 at Arborg business places
Thurs. July 21 at Riverton curbside pickup

**The workshop will be closed
on July 1 Canada Day
Please rinse your containers
Thank You for recycling**



Rural Municipality of
FISHER

Box 280, Fisher Branch, MB, R0C 0Z0
Tel: 204-372-6393, Fax: 204-372-8470

NOTICE OF TENDER GRASS CUTTING

The Rural Municipality of Fisher is inviting tenders for grass cutting at:

Town of Broad Valley

Please state price per cut in the tender.

- Applicant is to supply own equipment and fuel.
- Applicant to be 18 years of age or over.
- Lowest or any tender not necessarily accepted.

Submit sealed envelope marked "**Tender Grass Cutting-Town of Broad Valley**" to:

Rural Municipality of Fisher
Box 280
Fisher Branch, MB R0C 0Z0
Email: fishercao@mymts.net

Deadline for tenders is **9:00 a.m. Wednesday, July 6, 2022.**

For further information, call the RM of Fisher office at 204-372-6393.

Maps provided upon request.

WANTED

WANTED: Old advertising dealership signs, gas pumps, globes, pop machines, light ups. White Rose, Red Indian, Buffalo, North Star, Case Eagles. etc. Collector paying TOP PRICES. 306-221-5908.

LAKESIDE FLIGHT ACADEMY

Want to learn how to fly? Recreational Pilot Program is the best way to get started, must be 16 years of age. Privileges: fly for fun in a certified airplane, a home-built aircraft or an ultralight; fly by day only in Canada with one passenger; can easily add float rating to permit. Lakeside Flight School 204-642-4799.

NOTICES

URGENT PRESS RELEASES - Have a newsworthy item to announce? Having a spring/summer event? An exciting change in operations? Though we cannot guarantee publication, MCNA will get the information into the right hands for ONLY \$35 + GST/HST. Call MCNA 204-947-1691 for more information. See www.mcna.com under the "Types of Advertising" tab for more details.

NOTICE TO CREDITORS

IN THE MATTER OF: The Estate of ALLEN GARY DUNNE, late of the Town of Winnipeg Beach, in Manitoba, Deceased.

All claims against the above noted estate duly verified by Statutory Declaration, must be filed with the undersigned at their offices, 2200-201 Portage Avenue, Winnipeg, Manitoba, R3B 3L3 (Attention: DAVID C. KING), on or before the 29th day of July, 2022.

DATED this 22nd day of June, 2022.

TAYLOR McCaffrey LLP
Solicitors for the Executor of the Estate

NOTICES

INTERNET ADVERTISING NOT GETTING RESULTS? Advertise in the 32 Weekly Manitoba Community Newspapers to get your messaging out now and be seen all over the province! Hiring? Selling something? Have an on-line store? Let people know in the Blanket Classifieds! Call 204-467-5836 or MCNA at 204-947-1691 for more details or to book ads. MCNA - Manitoba Community- Newspapers Association. www.mcna.com

FINANCE

Private mortgage lender. All real estate types considered. No credit checks done. Deal direct with lender and get quick approval. Toll free 1-866-405-1228 www.firstandsecondmortgages.ca

HEALTH

Are you suffering from joint or arthritic pain? If so, you owe it to yourself to try elk velvet antler capsules. Hundreds have found relief. Benefits humans and pets. EVA is composed of proteins, amino acids, minerals, lipids and water. Key compounds that work to stimulate red blood cell production & cartilage cell regeneration & development. Stonewood Elk Ranch Ltd., 204-467-8884 or e-mail stonewoodelkranch@mymts.net

ECE EMPLOYMENT

**ECE childcare Educator for the
Arborg School Age
Child Care Co-op,**

casual position, based out of the
Arborg Elementary school.

Energetic, able to plan activities for multiple ages of children must have up to date first aid course, criminal and child abuse record checks competitive wages

**Applicants to respond to Stephanie
arborgschoolage@yahoo.ca**



Rural Municipality of
FISHER

Box 280, Fisher Branch, MB, R0C 0Z0
Tel: 204-372-6393, Fax: 204-372-8470

NOTICE OF TENDER GRASS CUTTING

The Rural Municipality of Fisher is inviting tenders for grass cutting at:

Town of Hodgson

Please state price per cut in the tender.

- Applicant is to supply own equipment and fuel.
- Applicant to be 18 years of age or over.
- Lowest or any tender not necessarily accepted.

Submit sealed envelope marked "**Tender Grass Cutting-Town of Hodgson**" to:

Rural Municipality of Fisher
Box 280
Fisher Branch, MB R0C 0Z0
Email: fishercao@mymts.net

Deadline for tenders is **9:00 a.m. Wednesday, July 6, 2022.**

For further information, call the RM of Fisher office at 204-372-6393.

Maps provided upon request.



Rural Municipality of
FISHER

Box 280, Fisher Branch, MB, R0C 0Z0
Tel: 204-372-6393, Fax: 204-372-8470

NOTICE OF TENDER GRASS CUTTING

The Rural Municipality of Fisher is inviting tenders for grass cutting at:

Town of Poplarfield

Please state price per cut in the tender.

- Applicant is to supply own equipment and fuel.
- Applicant to be 18 years of age or over.
- Lowest or any tender not necessarily accepted.

Submit sealed envelope marked "**Tender Grass Cutting-Town of Poplarfield**" to:

Rural Municipality of Fisher
Box 280
Fisher Branch, MB R0C 0Z0
Email: fishercao@mymts.net

Deadline for tenders is **9:00 a.m. Wednesday, July 6, 2022.**

For further information, call the RM of Fisher office at 204-372-6393.

Maps provided upon request.

Classifieds

THE EXPRESS
WEEKLY NEWS

Book Your Classified Ad Today - Call 467-5836 or Email classifieds@expressweeklynews.ca

FEED & SEED

CERTIFIED SEED: Very Early Yellow Pea, Forage Peas. Polish Canola, Spring Triticale. Also, Wheat, Oats & Barley. Contact Mastin Seeds at 403-556-2609. mastinseeds.com

Everything you need to promote your business



Call Today!
204-467-5836



RURAL MUNICIPALITY OF GIMLI PUBLIC NOTICE OF VOTERS LIST / VOTING AS A NON-RESIDENT VOTER/ and PERSONAL SECURITY PROTECTION

In accordance with Section 36 of The *Municipal Councils and School Boards Election Act* (MCSBEA), Notice is hereby given that a copy of the VOTERS LIST shall be revised at:

The Municipal Office at 62 2nd Ave. in the R.M. of Gimli between May 2, 2022 and September 20, 2022 during regular business hours (Monday to Friday 9:00 am to 5:00 pm).

At this time an Election Official will be available to update the voters list by:
(a) adding the names of voters who are entitled to have their names on the list;
(b) deleting the names of persons who are not entitled to have their names on the list; and
(c) making such other correction of errors to the list as required.

VOTER ELIGIBILITY: Subsection 21(1)

A person is eligible to have his or her name added to the Voters List if he or she is:

- 1) a Canadian citizen and at least 18 years of age on Election Day; and a resident of the local authority for at least six months prior to Election Day, OR a registered owner of land in the municipality for at least six months prior to Election Day.

VOTING AS A NON-RESIDENT VOTER: Subsection 22(1)

For municipal elections only, non-resident land-owners are eligible to vote in an election. In order to be eligible, the person must be:

- A Canadian citizen;
- At least 18 years of age on Election Day;
- A registered owner of land in the municipality for at least six months on Election Day.

A maximum of two non-resident property owners, per property, are permitted to vote in a municipal election. Subsection 22 (2). In order to be included on the Voters List, each of these voters must obtain written consent from a majority of the registered land-owners of the subject property, and file this with the Senior Election Official prior to September 20, 2022. Consent forms can be obtained from the RM of Gimli Municipal Office. When voting, a person may also be required to provide proof of ownership and/or proof of identity.

APPLICATION FOR PERSONAL SECURITY PROTECTION: Subsection 34 (3)

A voter may apply in writing to the Senior Election Officer (at the address /email/ fax number below) no later than **September 20, 2022** to have his/her name and other personal information omitted or obscured from the Voters List in order to protect the voter's personal security. The application may be submitted in person, by mail/email or fax and must include your name, address and include proof of identity.

All changes to the voters list must be completed on or before September 20, 2022.

Dated at; the R.M. of Gimli, in the Province of Manitoba, on April 5, 2022.

The next General Election for the R.M. of Gimli takes place on: October 26, 2022.

Robert J Potter, CMMA
Senior Election Official (S.E.O.) for the R.M. of Gimli
P.O. Box 1246
62 2nd Ave.
Gimli, MB R0C 1B0
Phone: 204-642-6650 / 204-461-1664 cell
Fax: 204-642-6660
Email: elections@rmgimli.com



RURAL MUNICIPALITY OF GIMLI PUBLIC NOTICE TO ALL PROPERTY OWNERS

PUBLIC NOTICE IS HEREBY GIVEN THAT ALL 2022 PROPERTY TAX STATEMENTS HAVE BEEN MAILED.

Any property owner who has not yet received a tax statement should contact the Municipal Office at 62 2nd Avenue, or telephone 642-6650.

New property owners are reminded that they are responsible for payment of the 2022 taxes, whether or not they receive a tax notice in their name.

2022 property taxes are due and payable on or before August 31st, 2022.

In the event of a Postal disruption, please contact the Municipal Office regarding correspondence and Utility Bills sent out of this office.

Kelly Cosgrove
Assistant Chief Administrative Officer
Rural Municipality of Gimli



EMPLOYMENT OPPORTUNITY

Fieldstone Ventures Education & Training Centre Inc. invites qualified candidates to apply for the following Contract position:

Client Services Representative -Arborg/Gimli

- Working for Fieldstone Ventures Board of Directors under the supervision of the Manager, the Client Services Representative Arborg is responsible for assisting clients with job search – resumes, job applications, cover letters, internet research and other related employment assistance services as well as Career Development
- Working 15 hrs weekly for the Municipality of Bifrost-Riverton and Town of Arborg with one day in Gimli.

Fieldstone Ventures Education & Training Centre Inc. is a one-stop shop for Education & Training in the Northwest Interlake region of Manitoba providing services to adults including: Employment Assistance Services, Adult Learning & Literacy, Community Based Training, and Continuing Education.

The successful candidate must have:

- Administrative and good computer skills- knowledge of All Microsoft Office programs
- Strong networking and interpersonal skills
- Excellent organizational and self-directed skills

Full job description available. Position to commence immediately. Mentoring will be available prior to and during initial employment.

Apply in writing with cover letter, resume and three references to:

Hiring Committee
Fieldstone Ventures Education & Training Centre Inc.
Box 1600
Ashern, MB R0C 0E0
bergnej@lakeshoresd.mb.ca
www.fieldstoneventures.ca
1-888-777-1059 or (204) 768-3797

Deadline for application: Open pending staff hiring

We thank all applicants for their interest however only those selected for an interview will be contacted. The successful applicant must complete a Criminal Record Check and Child Abuse Registry Check. Fieldstone Ventures strives towards a workforce that has fair representation of Aboriginal persons, persons with disabilities, visible minorities and women.

The Express Weekly News Classified booking deadline is Monday at 4 p.m. prior to Thursday's publication Please Call 204-467-5836

MEYERS ONLINE
FARM AUCTION
for DAVE & BEV ZAROSKI
PORTAGE, MB

Date Closing change
to July 6, 2022

Case 1085B Excavator; Allis Chalmers Crawler; 2007 Ford F150 XLT; 4x4; SAFTED; New Holland Haybine 499; TRACTORS: Case 930; IHC 706; Ford 5000; Case 730- case O matic; 2) 565A Hesston balers; Bale Pro 7000; MF Tandem Disc; NH 851 Baler; Hollander 3PTH Planter; New Holland haybine 495; 3PTH Montana Backhoe;

Bradley Meyers, Auctioneer
204 476 6262
www.meyersauctions.com

The Aurora Plus

1648 SqFt RTM

3 bedrooms, ensuite, huge kitchen, quartz countertops, walk-in pantry, island. 9 ft walls and double cathedral ceiling. James Hardie Siding.

Pictures available

www.
wgiesbrechthomes.ca

Taking orders for
Fall 2022

204-346-3231

— You're Invited —

St. Michael's Ukrainian Catholic Church
- North Foley

Invites you to join us for
"Praznik" on Saturday, July 9th.

Church service to be held at 11:00 a.m.,
with a BBQ/Canteen lunch and

Silent Auction to follow.

Everyone is welcome.

Please bring a lawn chair.

(Hwy 8 to Road 107N, then 3 1/2 miles west)



Rural Municipality of
FISHER

Box 280, Fisher Branch, MB, R0C 0Z0
Tel: 204-372-6393, Fax: 204-372-8470

SUMMER STUDENT EMPLOYMENT OPPORTUNITY

Office Assistant

July 11 to August 26, 2022
(Eight weeks)

The Rural Municipality of Fisher is accepting applications for the above position:

Duties:

This is a seasonal position to help assist office staff. Duties will include answering telephones, filing, dealing with ratepayers and other duties as assigned.

Requirements:

Must be a student between the ages of 16 and 30 who attended school full-time during the preceding year and intend to return to school on a full-time basis in the following academic year (part-time and distance education students do not qualify).

Must be able to work with minimal supervision.

Please submit applications by **9:00 a.m. Wednesday, July 6, 2022** to:

RM of Fisher
Box 280,
Fisher Branch, MB R0C 0Z0
Fax: 204-372-8470
Email: fishercao@mymts.net

NORSEMEN AUCTION
CONSIGN TODAY
NEXT SALE
SAT, JULY 2

Serving the Interlake
Gimli, MB
204-651-0008
 1 mile north and 1 mile west of Chudds Esso
10:00 am AUCTION START
 • 4 Basin Stainless Sinks
 • Old sinks • Refrigeration unit w/door; single phase
 • 3" Pump 2/0cc RS
 • 5 Barrels • 3pt Hitch mower; 7 ft • New Holland BR 590 • Cockshutt 1850 Tractor • New Holland 852 Baler • Side tool/ side grader • Belarus 800 Series Tractor • Hutch master disc • New Holland 273 Hayliner • Axle • 1968 Case Comfort King 730 • International 470 disc • 14 ft International cultivator • 8 ft homemade trailer with ramp • Car dolly with ramps • 1964 Plymouth Valiant Barracuda • Toyota Sienna • 20 ft trailer • 18 ft trailer, 6 ft top • 19 ft trailer • 1975 Ford Extended Cab • 2007 Pontiac Montana • 2002 Bobcat Keystone Camper • 1955 Ford Thunderbird • 2010 Ford Explorer • 1993 Dodge Ram 3500 Diesel • 1952 Chevrolet Styleline • 1963 Chevrolet Truck • 2019 MPG Ultra Lite RV/ Camper • 16 ft Trailer 2x 3500 lb axles • 1963 Fargo Truck • Starcraft Boat • Princecraft Boat • Old boat with Mercury 50 HP Motor • 1989 Sea Ray Sundancer 10-person cruiser • Ercoa Pontoon Boat • Craftsman 10" bandsaw • Dewalt 10" miter saw • Scroll saw • Bosch cordless drill w/ charger • Shopcraft 7 1/4" circular saw • B&D Circular saw • Craftsman belt sander • Belt and disc sander • Hausmann compound miter saw • 9V Cordless Makita drill • Black & Decker Chop Saw • Norwood Sawmill • Encyclopedia set • Storm door • Wood railing • 36x treated wood posts • Yamaha trumpet • Bongo BR • Marshall Amp • Sentec Amp • Yamaha elect N/C • El Nino N/C • Kay W/C • Citation • Hondo Mando • Titano Accordion • Guerrini Accordion • Violin • Jupiter • 50 tonne shop press • 4 tonne floor jack • 4 tonne straps • Arc welder 250 amp output • Assorted bottle jack • Bale elevator • 10ft Leon 3100 blade 3pt hitch one direction Swivel • 7" 30 ft versatile gas powered auger Wisconsin engine • 17ft x 4ft x 8ft hydraulic grain box with tarp • Grain Cart approx 100 bushel • Anthes 150 bushel grain cart • Electric Square bale elevator 15ft • 13 ft hydraulic dump box on 2x tandem axles • 2 hydraulic drill fills • Hoof trimming station super stall And MUCH MORE!
 Call Jordan for details
204-651-0008

Classifieds

THE **EXPRESS**
 WEEKLY NEWS

Book Your Classified Ad Today - Call 467-5836 or Email classifieds@expressweeklynews.ca

BATTERIES FOR EVERYTHING!

50,000 BATTERIES IN STOCK

*Auto *Farm *Marine
 *Construction *ATV
 *Motorcycle *Golf Carts
 *Rechargeables *Tools
 *Phones *Computers
 *Solar Systems & design
 *Everything Else!

THE BATTERY MAN

1390 St. James St.
 Winnipeg

TF 1-877-775-8271
www.batteryman.ca

Trucks, Trailers, Truckbeds & Tires

• Full Repair & Safeties
 • Vehicle Parts, Tires & Wheels
 • Trailer Parts & Batteries
 • Sales, Financing, Leasing & Rentals

EBY Aluminum:

• Gooseneck and Bumper Pull Cattle & Equipment Trailers
 • Truck & Service Bodies
 • Generation Grain Trailers

KALDECK TRUCK & TRAILER INC.

Hwy #1, MacGregor, MB

1-888-685-3127

www.kaldecktrailers.com

McSherry Auction

12 Patterson Dr.
 Stonewall, MB

Online Timed Auctions
 @ iCollector.com

Estate & Moving Auction

Closes Wed July 20th @ 7:00PM

Estate & Moving Auction

Closes Wed July 27th @ 7:00PM

Featuring Guns & Ammo

Consignments Welcome!

(204) 467-1858 or

(204) 886-7027

www.mcsherryauction.com

Starting a new business?
Call us - We have everything
you need to promote
your business

Call 204-467-5836

Do you like taking photos?

Do you want to earn some extra cash?

THE **EXPRESS**
 WEEKLY NEWS

Is looking for people in a number of communities including Gimli, Winnipeg Beach, Arborg, Lundar and Fisher Branch to help cover local events while recording our history for the newspaper. Hi resolution photos can be taken with an iPhone or camera.

If interested email

news@expressweeklynews.ca

with a couple of samples of your favourite photos

Everything you need to promote your business

Flyers
 Brochures
 Business cards
 Stickers
 Window decals
 Social tickets
 Door hangers
 Letterhead
 Envelopes
 Invoices
 Estimate sheets
 Posters
 Memo pads
 Post cards
 Presentation Folders

Call 204-785-1618

Remember Your Loved Ones
with an Announcement in the

Call 204-467-5836 or
classifieds@expressweeklynews.ca

THE **EXPRESS**
 WEEKLY NEWS

THE €XPRESS
WEEKLY NEWS

Book Your Classified Ad Today - Call 467-5836 or Email classifieds@expressweeklynews.ca

FIND THE RIGHT PERSON FOR THE POSITION with an EMPLOYMENT/ CAREERS AD in

THE €XPRESS
WEEKLY NEWS

take *a break*
 > GAMES

SUDOKU

						2		9
	8		6		2		3	5
		5	7				8	
	2					7		
				3		9		
		9			5			
		1		4		5		
			8	6			1	
	4							3

Fun By The Numbers

Like puzzles? Then you'll love sudoku. This mind-bending puzzle will have you hooked from the moment you square off, so sharpen your pencil and put your sudoku savvy to the test!

Level: Intermediate

Here's How It Works:

Sudoku puzzles are formatted as a 9x9 grid, broken down into nine 3x3 boxes. To solve a sudoku, the numbers 1 through 9 must fill each row, column and box. Each number can appear only once in each row, column and box. You can figure out the order in which the numbers will appear by using the numeric clues already provided in the boxes. The more numbers you name, the easier it gets to solve the puzzle!

9	4	7	5	2	1	8	6	3
3	5	2	8	6	9	4	1	7
8	6	1	3	4	7	5	9	2
6	1	9	2	7	5	3	4	8
5	7	8	1	3	4	9	2	6
4	2	3	9	8	6	7	5	1
2	9	5	7	1	3	6	8	4
7	8	4	6	9	2	1	3	5
1	3	6	4	5	8	2	7	9

Sudoku Answer

[illegible]

Crossword Answer

CROSSWORD

CLUES ACROSS

1. Basics
4. In a new way
10. ___ Paulo, city
11. Jailhouse
12. Expresses surprise
14. Trigraph
15. A small stream
16. Dissimilar
18. Promote
22. Gives a boost
23. Lawmaker
24. Orthodox Jews
26. Actor Harris
27. Wild cherry
28. Participate in democracy
30. Opposite of begins
31. A Brit's mother
34. Set of moral principles
36. Very fast airplane
37. Czech river
39. Private school in New York
40. Israeli dance
41. Electron volt
42. Adjusting
48. Duct by the bladder
50. Small burger
51. Begin again
52. Unstuck
53. Jai ___, sport
54. Get free of
55. For instance
56. Hotel chain
58. A team's best pitcher
59. Extracts from various sources
60. Indefinite period of time

CLUES DOWN

- ### 1. St. Francis of

			1	2	3		4	5	6	7	8	9		
			10				11							
12	13		14					15						
16			17					18				19	20	21
22								23						
24						25		26			27			
					28		29				30			
31	32	33			34				35			36		
37			38			39								
40					41			42		43	44	45	46	47
48				49					50					
51									52					
			53						54				55	
		56					57		58					
		59							60					

2. Supported
3. United in working
4. It cools your home
5. Predicting
6. Irritated
7. Popular talk show host
8. Fabric edge
9. A resource for employees
12. Broadway's Jackman
13. Small water buffalo
17. City of Angels: __ Angeles
19. Asteroids
20. Tailless amphibians
21. German expressionist painter
25. What drives you
29. N. Vietnamese ethnic group

31. Gold coin used in British India
32. Have deep affection for
33. Ponds
35. Breaks between words
38. Hairstyle
41. Print errors
43. Family of iron alloys
44. Sidelined in bed
45. Many couples say it
46. Brazilian hoopster
47. Allman Brothers late frontman
49. German city
56. One hundred grams (abbr.)
57. One billionth of a second (abbr.)

Classifieds Announcements

THE EXPRESS
WEEKLY NEWS

Book Your Classified Ad Today - Call 467-5836 or Email classifieds@expressweeklynews.ca

MCDUGALL
AUCTIONEERS LTD.



**UNRESERVED RETIREMENT FARM SALE
FOR GARNET & SUSAN LANZ**
**BID ONLINE UNTIL
MONDAY, JUNE 27-2PM (CST)**
View June 23 & 24, 9am - 4pm
Ashern, MB 2 Miles West on Sharptail Rd
G.P.S. Coordinates - 51.18437728853643,
-98.41310307064637

Bid on a Great Selection of Case Tractors, John Deere Tractors, New Holland Balers, Augers, Cattle Equipment and so Much More!

For More Info Call Jay at 1(204)730-7444.
Visit Our Website For Photos & Details.

www.McDougallAuction.com
1-800-263-4193

From East to West - Sell with the Best!
McDougall Auctioneers Ltd. Provincial License Number 331787
Subject to Additions & Deletions. Not Responsible For Printing Errors.

Everything you
need to promote
your business **Call Today!**
467-5836



For all your printing
and publishing needs

**RIVERDALE PLACE
WORKSHOP INC.**

requires a

**RECYCLING ASSISTANT
SUPERVISOR**

to assist with sorting recycling
and to help with supervising the
participants.

Job position: Mon., Tues., Weds, Thurs & Fri
8:45am to 3:45pm.

Benefits and pension plan provided.
A Criminal record check and Adult Abuse
check required.

Job description available at the workshop.

Please drop off resume or send to:

Alex Janower, Manager
Riverdale Place Workshop Inc.
Box 609 Arborg, MB R0C 0A0
Telephone: 204-376-5584
Fax: 204-376-5584
email: riverdalew@mymts.net

ANNIVERSARY



Reid and Margaret Anderson
Together as friends and partners
are celebrating their
60th Wedding Anniversary
June 23, 1962

With love and admiration on
this extraordinary day!
Happy 60th Diamond
Wedding Anniversary!
Congratulations!

-Love,
Your children, grandchildren
and great-grandchildren

**Remember Your
Loved Ones**
with an Announcement in the

THE EXPRESS
WEEKLY NEWS

Call 204-467-5836 or
classifieds@expressweeklynews.ca

WANTED
Standing
Timber
Call Grant
Kurian at
204-346-2537



**Power Builder
Advertising
WORKS!**

- GET SEEN by over 360,000 Manitoba Homes!
- Use your LOGO!
- Create instant top of mind awareness
- Showcase your info, business, product, job, announcements or event
- We format it, to make it look great!
- Starting at \$339.00 (includes 45 lines of space)
- The ads blanket the province and run in MCNA's 32 Manitoba community newspapers
- Very cost effective means of getting your message out to the widest possible audience

Contact this newspaper
NOW or MCNA at
204.947.1691 or email
classified@mcna.com

www.mcna.com

Public Notice

Proposed Valley Fiber Radio Communications Project Telecommunications Tower

Valley Fiber Limited is a locally owned and operated technology firm based out of Winkler, MB. The ever-growing need for fast and reliable telecommunications has spurred our innovation. To continue this innovation, Valley Fiber in partnership with the RM of Gimli, is proposing to construct a 58m tower in Gimli. The tower will support communication equipment and Transport Canada required lighting. The tower will support three types of antenna that are .33m², 0.1m² and 0.38m² in size. In addition to these antennae the tower has been designed for future sharing capacity to better serve the area. The tower will require a small 3.6m x 4.2m ancillary building at the base of the tower. To ensure the public's safety, anti-climbing shielding and signage will be posted on the property. No suitable structures were observed within the area that met project requirements.

Valley Fiber is inviting the public to comment on the proposed tower location prior to **August 1, 2022**. This tower is going to be constructed and operated to be fully compliant with Industry Canada guidelines found in the client procedures circular (CPC-2-0-03, including Safety code 6 and CEAA 2012). For more information on Industry Canada's requirements please see (www.ic.gc.ca/towers).

Project Details:

Location: Gimli, Manitoba

Legal: SW-21-19-04-E

Coordinates: 50.643526, -96.989622

Valley Fiber Contact:

Tim Peters
800 Monticello Way
Winkler MB R6W 0N3
tim.peters@valleyfiber.ca

RM of Gimli Contact:

Box 1246, 62 Second Ave
Gimli, MB R0C 1B0
204-642-6650

Industry Canada Contact:

400 St. Mary Ave, 4th floor
Winnipeg, MB R3C 4K5
lc.spectrumwinnipeg-winnipegspectre.ic@canada.ca



X - proposed tower location



SERVING YOUR COMMUNITY

- | | | |
|------------------|-------------------|----------------------------|
| • Monuments | • Restoration | Granite |
| • Pillow markers | - Level monuments | Bronze |
| • Pre Needs | - Renew monuments | Columbariums |
| • Final Dates | - Engraving | -single, family, community |

Appointments available in the comfort of your home

Email: sunsetmemorialsgimli@gmail.com

Bus: 1-204-642-8818 • Cell: 1-204-407-3096

www.sunsetmemorialsgimli.ca

Classifieds Announcements

Book Your Classified Ad Today - Call 467-5836
or Email classifieds@expressweeklynews.ca



CELEBRATION OF LIFE

Monica Sigurdson

June 29, 1917- December 7, 2021

A memorial service for Monica who died at the age of 104 1/2 years in the Fisher Personal Care home on December 7, 2021

The service will be held at 2 p.m. on July 7, 2022 at the Arborg and District Multicultural Heritage Village. Rev. Stefan Jonasson officiating.

Coffee and lunch served following the service. Everyone is welcome.

CELEBRATION OF LIFE

Brenda Anderson

A Celebration of Life for Brenda Anderson on Sunday, July 10, 2022 from 1 p.m. to 4 p.m.

Formal remarks, sharing of memories, and other presentations from 2:30 p.m. to 3 p.m. - come and go as you like! Tea, coffee and light snacks served.

Farmers Hall, 16111 MB-231, Gimli, MB R0C 1B0 (Provincial Road 231 @ Rd 17E - near Gimli Airfield)



OBITUARY

Valdina Johnson
1930 - 2022

It is with heavy hearts we announce the passing of a wonderful Mother, Amma, and Long-Amma, Valdina Johnson on June 17, 2022 at the age of 91 years.

She is survived by her children June (Ken) Kristofferson, Alvin Johnson, and Carolin (Rob) Magnusson, and son-in-law Andre Maguet. Grandchildren Kim (Jason) Magnusson, Kirk (Melissa) Kristofferson, Kenley Kristofferson (Brenna MacGregor); Justin (Jamie) Maguet, Eric (Carolyn) Maguet, Brittany Maguet (Zach Jordan); Landon Johnson and Ashton (Chase) Kukuchka; Destiny Magnusson (Josh) and Avery Magnusson (Eric); 19 great-grandchildren and numerous nieces and nephews.

Valdina was predeceased by her husband Kjartan, daughter Joan Maguet, sister Gudny Johnson (Snorri), brother Hemundur (Thora) Jonasson, brother Alli (Bjorg) Jonasson, and brother-in-law Kris (Kristine) Johnson.

In 1950, Valdina married Kjartan Johnson. Theirs was a marriage of kindness, respect, and love, every day of their life together. They did not ever raise their voices to one another, and their 65 years together was a testament to the partnership that is the basis of our family. They were truly a team, working and playing side-by-side.

She was a wonderful support to Kjartan as the family opened Johnson and Sons Arborg Ltd. in 1953. We became a Home Hardware dealer in 1981, and they enjoyed many wonderful trips worldwide with their Home Hardware family. They travelled to Iceland numerous times and enjoyed visiting with their relatives there, along with many road trips across Canada and the US. Valdina, along with her sister Gudny, always enjoyed being in the store for special events and many may remember the beautiful coffee and cake that they served for in-store celebrations.

As a mother and Amma, she was never idle; there was always something to be done, whether keeping beautiful vegetable and flower gardens which she tended to with Gudny, baking bread or our favourite sweet treats, and of course, looking after the many grandchildren while their parents were busy at the store. Without fail, she always had a full hot meal on the table for "dinner" or lunch, including dessert, and we all looked forward to coming home to the farm for a meal around the table together at mid-day.

Kjartan and Valdina later moved to town and built their dream home on River Road in Arborg. We gathered for many wonderful Christmas Eve celebrations there, and during the summer months in their large backyard, surrounded by flowers. In July 1990, the business was sold; but retail is the lifeblood of our family. In 1991, her children continued their legacy and opened Johnson's in Gimli. She was often in the store during the early years and continued looking after grandchildren and great-grandchildren when they moved to the Waterfront Centre in Gimli, where they enjoyed a wonderful view of Lake Winnipeg.

Upon moving to Betel Home in 2017, Valdina made new friends and so enjoyed the daily activities. She was an exceptionally kind and graceful person and had a wonderful relationship with her grandchildren and great-grandchildren. She was never too busy to listen and took great pride in sharing their accomplishments. Family was everything to her; our lives are forever enriched by the lessons she lived by and passed on to us daily.

A Celebration of Valdina's life will be held at the Ardal-Geysir Lutheran Church in Arborg on Tuesday, July 5th at 2:00 p.m., with lunch to follow.

Our family wishes to express our sincere gratitude to the staff at Betel and at the Community Health Centre in Gimli. We so appreciate the kind and compassionate care from all of the staff at Betel, and they have gone above and beyond to enrich her life there over the last few years.

If desired, memorial donations may be made to the Ardal-Geysir Lutheran Church.



204-949-2200
Gimli 204-642-7124
neilbardalinc.com

OBITUARY

Norma Allyson Onofreychuk

December 16, 1958 - June 12, 2022

On Sunday, June 12, 2022 at the Gimli Community Health Centre, Norma Allyson Onofreychuk, aged 63 years, passed away after a courageous battle with cancer. She passed peacefully with her family by her side.

Norma is survived by Greg, her loving husband of 44 years; daughter Susan (Brian); son David; son Jeffery; granddaughters Charlotte and Daphne; sisters Karen, Janice (Scott); brother Craig; brother-in-law Ron (Linda); brother-in-law Bruce. She was predeceased by her parents James and Mae Comack; in-laws Ross and Edith Onofreychuk; sister-in-law Thea Comack; sister-in-law Kay Onofreychuk.

Norma will be fondly remembered by family and friends and those who were fortunate to have been part of her life.

She was well known and respected for her love of animals, cooking, gardening, crafting and driving or riding fast motorized vehicles. Her life was truly focused on her love for her granddaughters.

Everyone always knew she was doing something special for her family and friends. Per her wishes cremation has taken place. A private interment will take place at a later date. Donations may be made to CancerCare Manitoba in memory and honor of Norma. Condolences may be left on her tribute wall at www.gilbartfuneralhome.com
Gilbart Funeral Home, Gimli
in care of arrangements



OBITUARY

Agnes Stefanson

May 3, 1926 - June 19, 2022

Peacefully with family by her side on Sunday, June 19, 2022, and after a courageous battle, Agnes passed away at the age of 96 years at the E. M. Crowe Memorial Hospital in Eriksdale, MB.

Agnes was born on May 3, 1926 in Clarkleigh, MB, the youngest of 10 children and the only one born in Manitoba (the family had just previously moved from Grayson, SK). She completed her education in Clarkleigh, then worked in Winnipeg, but missed the country and came back to work in Oak Point, MB. She married Stefan on August 6, 1949 and farmed in the Stony Hill District east of Lundar. She remained on the farm for the rest of her life until the last 34 days she spent in the hospital. She worked very hard on the farm inside and outside but enjoyed the work and the lifestyle. She worked along with Dad in the hayfield, milking cows and caring for the cattle which were very special to her.

Agnes was proud of her gardens and was always busy canning, baking, knitting and sewing. She had a wonderful good nature and always put the interest of others ahead of her own. She was always ready to give a hand to anyone in need and help out wherever she could.

She is survived by her son John, daughter Donna (John), nieces, nephews, special neighbours and many close friends.

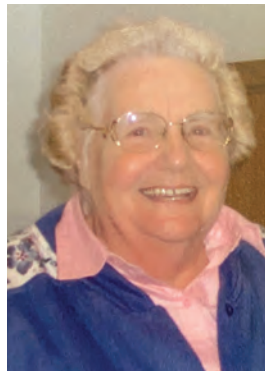
Agnes was predeceased by her husband Stefan, parents George and Eva Hartman, all of her siblings of four brothers and five sisters and all of her in-laws.

Cremation has taken place and an interment will be held in the family plot at the Stony Hill Otto Cemetery at a later date.

The family would like to extend a heartfelt thank you to the doctors and nurses who helped Mom over the years. Special thanks to everyone at the Eriksdale Hospital for their wonderful care. Thank you to everyone for their expressions of kindness and also to John and Karen Gray of Arnason's.

Donations may be made in Agnes' memory to a charity of one's choice.

Arrangements by:
ARNASON FUNERAL HOME
Ashern - Lundar
1.204.768.2072
1.866.323.3593



Would you like to join our team?

**Evergreen School Division
is looking for bus drivers!**

We require caring, safe drivers to be bus drivers for our students.

There is no fee to attend this training session,
but you must pre-register by Monday, July 4th
Contact Cari Ann at 204-641-4382 to register.

Where:
Tec Centre
234 Tudor Lane
Gimli Industrial Park

Date:
This is a 3-day training session
July 7, July 8, and July 9
9:00am - 5:00pm each day



Please bring your own lunch for each of these days and we hope to see you there!

Classifieds Announcements

THE **EXPRESS**
WEEKLY NEWS

Book Your Classified Ad Today - Call 467-5836 or Email classifieds@expressweeklynews.ca

OBITUARY



Larus Palsson
Born: April 3, 1929

Date of passing: June 13, 2022

Peacefully, with his family at his side, on June 13, 2022, at the Arborg Personal Care Home, Larus Palsson, aged 93, of Arborg, Manitoba passed away.

He is deeply loved and will be forever missed. He is survived by his daughter Linda (Ken) Foster, son Gregory (Laureen) Palsson, daughter Elaine (Ron) Shoemaker, son Ernest (Brenda) Palsson, and son David Palsson; grandchildren: Todd

Sigvaldason, Scott Sigvaldason (Kallee), Melanie (Kevin) Hamm, Sean Palsson (Krystyn), Erin (Michael) George, Lori (Alan) Howe, Mark (Esther) Shoemaker, Marleen Palsson (Cody), Dale Palsson, Dayna Palsson (Brendan). He is also survived by his 21 great-grandchildren, five great-great-grandchildren; brother Sigg; sisters Inga and Sigg; sisters-in-law Marlene, Bernice and Pat and brother-in-law Roy.

Larus was predeceased by his wife Margret, his parents Larus and Ingibjorg Palsson (Step-Mother Elin), his father and mother-in-law Valdimar and Sigrun Johnson, his sister Beatrice, brothers Pall, Oli, Hjalti, and Victor, brothers-in-law Kris, Sigmar, Valdimar, Norman, Steini, Richard, Fridjon, and Stanley, sisters-in-law Ruth, Inga, Sigg, Gay, Gudlaug, Hulda, and Fjola.

Larus attended Island School and helped with the family farm. In 1946 he went fishing at Ramsays Point and fished there for two seasons. In 1945 Larus met the love of his life, Margret Johnson of Riverton, Manitoba, and they were married on September 26, 1948. They built their first home on St. Peters St. in Arborg. In 1948 he worked at building the Pool Elevator, and in 1949 worked with K.O. Einarson at the Arborg Garage. In 1958 Larus and his cousin Leifur Fridfinnson partnered in a new business, Viking Motors. He later sold his half share in the business to Robert Fridfinnson and retired. During his time at the dealership, he won many awards. Larus and Margret built their second home on the corner of Spruce and Birch in 1964. Larus served as councillor in the first incorporated Village of Arborg in 1963-1965 and spent a number of years in town planning. He returned to council in 1980. He was re-elected to council from 1980-1983 and 1983-1986. He was a chairman of public works, member of the New Arena Board, The Arborg and District Museum Board, The Historical Society, The Eastern Interlake Planning District Board and was Deputy Mayor. In October 1986 elections for Mayor of Arborg were held and Larus won with a large majority. Larus and Margret enjoyed gardening and spending time at the lake with family. Margret passed away suddenly in April of 1985 and soon after Larus retired as Mayor.

Larus moved to Assisted Living in Arborg where he enjoyed the company of many friends. He also would join friends at Chicken Chef to discuss the daily happenings in and around Arborg. Dad loved poetry and music. His favourite poem was "Daffodills" and I understand that it was also a favourite of his brother Pall.

We love you Dad, Afi, Langafi and will enjoy the many happy memories you have given us. Rest peacefully until we meet again.

There will be a private family interment at a later date.

In lieu of flowers, donations may be made to the Arborg Community Cemetery in his memory.

The family would like to extend thanks and gratitude to the doctors and staff of the Arborg Personal Care Home.

MACKENZIE FUNERAL HOME STONEWALL
(204) 467-2525 • info@mackenziefh.com

MacKenzie
FUNERAL HOME

OBITUARY



Anthony Fuz
May 7, 1926- June 21, 2022

Peacefully, on June 21, 2022 at the Arborg Hospital, our dear Dad, Anthony Fuz of Poplarfield has been reunited with his beloved wife, Dorothy, whom he missed every minute of every day.

He will be greatly missed by his daughters Virginia (Donald), Bonnie, and his son Gordie (Darlene). He was extremely proud of his grandchildren Brad, Amanda, Amber, Chelsea (Chris), Melissa (Trevor), Tyler (Sydney), and Devon (Andrea). He also had 12 great-grandchildren whom he loved dearly

Shailynn (Cameron), Kelson, Bryce, Jaxson, Dane, Ember, Dakota, Syllas, Liv, Harlow, Nova and Crew. He was also so excited and proud of his first great-great-grandchild Clara. Tony is survived by his sister, Joyce.

He was predeceased by his wife, Dorothy in 2017, his parents John and Justine, son-in-law Bruce; sisters Pearl, Mary, Anne, Marge; brothers Steve and Mike.

Dad was a homeboy and felt no need to go afar on any trips or holidays. He was content to do his touring from a golf cart. Dad was a farmer at heart and raised cattle, turkeys, and a little crop. He loved his cows and until recently liked taking a ride on his golf cart to watch them.

He also did some carpentry work in his younger years. He helped build many houses and did home renovations in the area.

Dad had a love for Ukrainian music. He played a few instruments but his favorite was the accordion. He was in a local band, MTOJ for several years playing at socials and weddings.

We loved Dad and had great respect for him. We will miss him dearly, but take comfort that he is with Mom once again.

A big thank you to all of the homecare workers, that have helped Dad the last few years.

At his request cremation has taken place and a private graveside family service will be held at a later date.

FISHER FUNERAL HOME INC.
Entrusted with arrangements.
204-372-6803 or 204-372-6271

Your memory will live forever Engraved within our hearts

Remember Your Loved Ones
with an Announcement in the

THE **EXPRESS**
WEEKLY NEWS

Call 204-467-5836 or
classifieds@expressweeklynews.ca

Everything you need to promote your business

FLYERS
BROCHURES
BUSINESS CARDS
STICKERS
WINDOW DECALS

SOCIAL TICKETS
DOOR HANGERS
LETTERHEAD
ENVELOPES
INVOICES

ESTIMATE SHEETS
POSTERS
MEMO PADS
POST CARDS

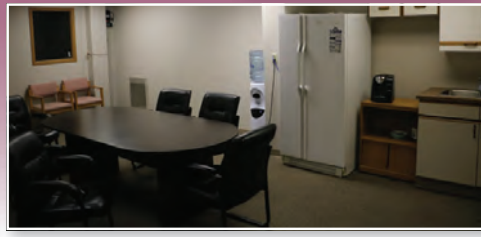
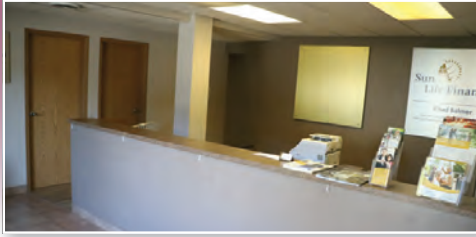
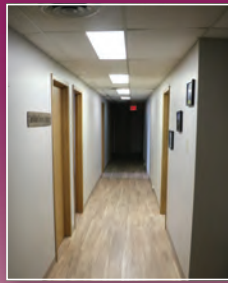


For all your printing
and publishing needs

Call Today!
204-467-5836

The Express Weekly News Classified booking deadline is Monday at 4 p.m. prior to Thursday's publication Please Call 204-467-5836

CLANDEBOYE AVE in Selkirk Executive Mall OFFICE SPACE FOR LEASE



Property Features

Total square Footage 1700, includes eight offices of various sizes, a board room and a front reception area. Current tenants include The Lord Selkirk Teachers Association, Sun Life Financial, two Massage Therapists, an Esthetician and the Selkirk Record. The building was upgraded in 2012. Both the reception and board room are shared, there are currently one office available for lease.

For information please contact:
BIG Real Estate
204-485-0010 email bigandcolourful@mts.net



GOETZ SIDING

• 5" Eavestrough • Soffit/Fascia
• Custom Cladding
(204)223-7740 goetzsidings@gmail.com

SHERLOCK TREE REMOVAL
Pruning • Stump Grinding • Chipper
Licensed Arborists
Fully Insured - Claim Free
30 years Experience
Vince 861-0487
Darren 861-0028



Advertising that Works! To place your BIZ CARD call 204-467-5836



• Shingles • Repairs
• Cedar Shakes • Metal Roofing
FREE Estimates
IKO ShieldPRO plus+ CERTIFIED INSTALLER
204-641-5200



BNS EXCAVATING

- Water & Septic Systems
- Design Services
- Frozen Lines
- Well Repair
- Ice Dam Steaming
- Driveways
- Culverts
- Trenching
- Auger Drilling
- Septic Repairs

(204) 461-2856 BNSexcavating@hotmail.com



• RESIDENTIAL • COMMERCIAL
HNAUSA, MANITOBA
For All Your Plumbing & Repair Needs
- ROTOR ROOTER SERVICES -
• Sewer Camera Cell: 204-485-4227
JEFF FLETT jeffsplumbing1@gmail.com



Rural property specialists

Add curb appeal, functionality, and resale value to your home or cottage. Enjoy country living!

204.781.0269 | SpruceAcresLandscaping.com



Ph: 204-641-5266

Url: www.innovativeelectric-mb.ca
Email: matthew@innovativeelectric-mb.ca

STARTER REPAIR WHOLESALE BATTERIES



311 Main Street, Arborg
allelec@mts.net 204-376-5003



INDEPENDENT CONSULTANT

- Cooking Shows • Meal Prep Solutions
 - Fundraisers • Individual Orders
- 204-485-4272 call or text
stoneware444@gmail.com

www.pamperedchef.biz/michellebalharry



**SOUTH BASIN
PROPERTY
EXPERTS**
204-894-0264

- Lawn care
- Power Washing
- Skidsteer Services
- Window Cleaning
- Hedge Trimming
- Landscape
- Gutter Cleaning
- Power Raking
- Aeration
- Spring & Fall Cleanup

M DRIEDGER HANDYMAN

- Decks • Stairs • Railings • Windows and Doors
- Sheds • Painting • Cabinets
- Home Repair • Assembly • Blinds
- Laminate Flooring Repairs

204-641-4679
Serving Gimli and area mdriedg@gmail.com

CONVENIENCE

- Grocery • Drinks • Snacks
- Coffee to Go • Ice • Firewood
- Fireworks • ATM • Greeting Cards
- Newspapers • Books • Pet Food
- Toys & more

SNACKS • LOTTO
20088 First Ave,
FIRST AVENUE Sandy Hook
OPEN YEAR ROUND 10AM - 6PM
7 DAYS A WEEK



You have QUESTIONS, We have ANSWERS!

- Prescriptions • Liquor Store
- Home Health Care Aids
- Snacks and more!



LUNDAR PHARMACY 204-762-5431
18 Main St., Lundar

Glass Specialists

- Sealed Units
- Flat Glass
- Mirrors
- Laminated
- Tempered
- Plexi/Lexan

Construction

- Windows & Doors
- Siding
- Custom Cladding
- Decks
- Construction/Renovations



19046 Ukrainian Park Road
Camp Morton, MB
204 376 5177
204 642 2980
Intglass@mymts.net



272 Main St.

Selkirk, MB

204-482-2277

WE DELIVER

The Water Shop delivers to communities up Highway 9 up to and including the Gimli area.
Call today for water that is
"Clearly made for You!"

ALICE ROOFING LTD.

Complete Roofing Service

- Residential
- Agricultural

Licensed & Insured

www.aliceroofing.ca



204-757-9092

Everything you need to promote your business

- FLYERS
- BROCHURES
- POST CARDS
- STICKERS
- BUSINESS CARDS

- PRESENTATION FOLDERS
- SIGNS
- SOCIAL TICKETS
- DOOR HANGERS
- LETTERHEAD

- ENVELOPES
- INVOICES
- ESTIMATE SHEETS
- POSTERS
- MEMO PADS
- And MORE...



For all your printing and publishing needs

467-5836



**NEW VALLEY ROOFING
& RENOVATIONS**

Serving The Interlake

Henry Reimer

BP & IKO Certified Roofer

204-642-2551

henry.reimer@newvalleyroofing.com
newvalleyroofing.com



BATTERY POWER. MADE BY STIHL.



BGA 57
BATTERY BLOWER
AK 20 • AL 101 • 118 WH • 2.3 KG/5.1 LB ①
SAVE \$30
\$269⁹⁹
MSRP \$299.99



MSA 120 C-BQ
BATTERY CHAIN SAW
AK 20 • AL 101 • 118 WH • 2.5 KG/5.5 LB ②
SAVE \$30
\$399⁹⁹
MSRP \$429.99 with 12" bar



MSA 140 C-BQ
BATTERY CHAIN SAW
AK 30 • AL 101 • 187 WH • 2.6 KG/5.7 LB ②
SAVE \$30
\$449⁹⁹
MSRP \$479.99 with 12" bar



HSA 56
BATTERY HEDGE TRIMMER
AK 10 • AL 101 • 59 WH • 2.9 KG/6.4 LB ①
SAVE \$20
\$349⁹⁹
MSRP \$369.99



FSA 57
BATTERY TRIMMER
AK 10 • AL 101 • 59 WH • 2.6 KG/5.7 LB ①
SAVE \$50
\$249⁹⁹
MSRP \$299.99



NEW
FSA 60
BATTERY TRIMMER
AK 20 • AL 101 • 118 WH • 3.3 KG/7.3 LB ①
SAVE \$30
\$349⁹⁹
MSRP \$379.99



HLA 56
BATTERY LONG-REACH HEDGE TRIMMER
AK 20 • AL 101 • 118 WH • 3.8 KG/8.4 LB ①
SAVE \$30
\$499⁹⁹
MSRP \$529.99



Shop local. Buy STIHL.

Dealers may sell for less. Pricing on all chain saws and blowers will remain in effect until June 24, 2022. Pricing on all other power tools and accessories will remain in effect until July 29, 2022. Illustrations and descriptions are as accurate as known at the time of publication and are subject to change without notice. STIHL Limited is not responsible for a printing error, the local STIHL Dealer has the final authority to set product pricing. Pricing valid at participating dealers only while supplies last.

① Weight without battery. ② Weight with powerhead only. ③ Unit priced with battery and charger.

WWW.STIHL.CA

SHACHTAY
SALES & SERVICE LTD.
www.shachtay.com

204-376-5233
Servicing the Interlake for 55 Years!
Arborg, Manitoba
Family Owned